

THIS PLAT REPRESENTS THE ENTIRE RECORD OF THE DEPENDENT RESURVEY

OFFICIALLY FILED: 2/17/2015

ORIGINAL

TOWNSHIP 32 SOUTH, RANGE 1 WEST, OF THE WILLAMETTE MERIDIAN, OREGON
RETRACEMENT

(A) The 1/4 sec. cor. of secs. 19 and 20, monumented with an iron post, 1 1/2 ins. diam., firmly set, projecting 12 ins. above the ground, with brass cap mkd.

COUNTY SURVEYORS OFFICE
T 32 S R 1 W
1/4 S 19 | S 20
1968

from which the remaining original bearing tree
A. sawed fir stump, 40 ins. diam., bears N. 80° E., 9.0 ft. dist., with scribe marks BT visible on bark scribe and a healed blaze.

and a bearing tree mkd. by the Douglas County Surveyor's Office in 1968
A. fir, 22 ins. diam., bears N. 89° W., 7.3 ft. dist., with a healed double blaze.

and a new bearing tree
A. fir, 5 ins. diam., bears N. 27° E., 18.9 ft. dist., mkd. X at breast height and BT at base.

(B) The center 1/4 sec. cor. of sec. 19, monumented with an iron post, 2 1/2 ins. diam., firmly set, projecting 2 ins. above the ground, with brass cap mkd.

T 32 S R 1 W
C 1/4
S 19
1976 OLS536

from which remains of bearing trees mkd. by Baughman, PLS in 1976

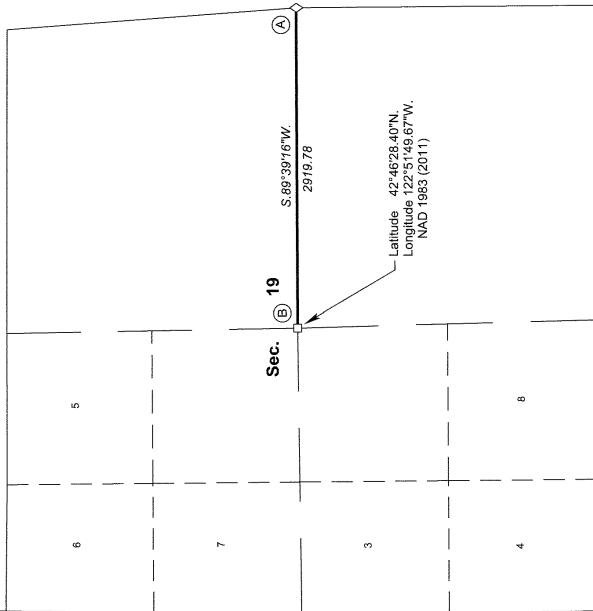
A. sawed cedar stump, 12 ins. diam., bears S. 36° W., 19.6 ft. dist., with illegible scribe marks visible on partially healed blaze. (Record, fr)

A. sawed fir stump, 15 ins. diam., bears N. 19 1/2° W., 18.1 ft. dist., with healed double blaze.

and bearing trees mkd. by Simon in 2002

A. fir, 15 ins. diam., bears N. 78 1/2° E., 22.1 ft. dist., with a healed blaze.

A. fir, 19 ins. diam., bears S. 12 1/2° E., 36.9 ft. dist., with a healed blaze.



This plat constitutes the entire record of the retracement of a portion of the subdivision of section lines of section 19, Township 32 South, Range 1 West, Willamette Meridian, Oregon.

The history of official surveys pertaining to this retracement is as follows:

In 1883, Rufus S. Moore, U.S. Deputy Surveyor, surveyed the subdivision lines, as shown on the official plat of survey approved April 10, 1884.

In 2002, Francis J. Simon, Cadastral Surveyor, resurveyed portions of the south and west boundaries and subdivisional lines, and subdivided section 19, as shown on the official plat of survey accepted June 14, 2005.

The direction of the line is based on the true meridian as determined by Global Positioning System (GPS) techniques and carried forward by sustained triangulation using conventional surveying techniques. All measurements along the lines were derived through the use of GPS. Measured distances and directions have been adjusted by computer software that incorporates a least squares adjustment routine. The adjusted mean bearings and mean horizontal ground elevation distances are reported to the nearest second and 0.01 foot.

The lottings and areas are as shown on the plat approved April 10, 1884, and the plat accepted June 14, 2005.

Preliminary to the retracement, the lines of the official original surveys were rechecked and surveys were made for all corners, lines, other calls of record, and where available, collateral evidence of local surveys and corners. The retracement data were thoroughly verified and only the true line field data are given hereon.

Each new bearing tree has a 2 1/2 inch x 1/4 inch magnetic nail (Mag Nail) driven at the base on right side center, unless otherwise noted in the corner description.

The Bureau of Land Management (BLM) property line was posted with aluminum angle posts, 5 feet long, 1 inch by 1 inch, blazed, painted, and lagged with BLM boundary signs.

The geographic position shown hereon was determined by a tie from a temporary GPS control point, established utilizing dual frequency, carrier phase GPS receivers, and processed using the National Geodetic Survey's Online Positioning User Service (OPUS).

The survey was executed in accordance with the specifications set forth in the Manual of Surveying Instructions (2009), and the special instructions approved April 28, 2010, and assignment instructions dated August 7, 2013, for Group No. 2500, Administrative File No. 1309, Oregon, by Arthur R. Rambo, Cadastral Surveyor, beginning August 28, 2013, and completed September 9, 2013. He was assisted by Dale A. Mustain and Ernest Q. Lundeen, Surveying Technicians.

LEGEND
◊ Original corner previously remonumented
□ Corner previously established or reestablished

UNITED STATES DEPARTMENT OF THE INTERIOR
BUREAU OF LAND MANAGEMENT

Portland, Oregon

The survey represented by this plat, having been correctly executed in accordance with the requirements of law and the regulations of this Bureau, is hereby accepted.

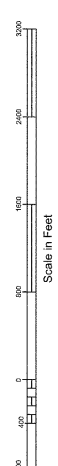
For the Director
Mary J. M. Heald
Chief Cadastral Surveyor of Oregon

February 17, 2015
Date

I, Arthur R. Rambo, Cadastral Surveyor, HEREBY CERTIFY upon honor, that in pursuance of special instructions bearing the approval date of the 28th day of April, 2010, and the assignment instructions bearing the date of the 7th day of August, 2013, I have retraced a portion of the subdivision of section lines of section 19, Township 32 South, Range 1 West, Willamette Meridian, Oregon, which is represented upon this plat as having been executed by me and under my direction; and that said survey has been made in strict conformity with said special instructions, the Manual of Surveying Instructions, and in the specific manner described on this plat.

February 2, 2015
Date

Arthur R. Rambo
Cadastral Surveyor



FILED
Date: 5/8/2015 By: JC
This survey consists of:
Map: T32-1W 2015-1
Narrative: VOL 58 PGS 23176
Corner Rpt. ENTIRE RECORD OF THE DEPENDENT RESURVEY
DOUGLAS COUNTY SURVEYOR