

23160

**UNITED STATES
DEPARTMENT OF THE INTERIOR
BUREAU OF LAND MANAGEMENT**

FIELD NOTES

OF THE

DEPENDENT RESURVEY OF A PORTION OF THE SUBDIVISIONAL LINES

TOWNSHIP 21 SOUTH, RANGE 9 WEST,

OF THE WILLAMETTE MERIDIAN,

IN THE STATE OF OREGON

EXECUTED BY

Joseph M. Mannix, Cadastral Surveyor

Under Special Instructions approved May 21, 2013,
which provided for the surveys included under Group No. 2721,
and Assignment Instructions dated May 21, 2013.

Survey commenced June 3, 2013

Survey completed August 5, 2013

T. 21 S., R. 9 W., Willamette Meridian, Oregon

The following field notes are those of the dependent resurvey of a portion of the subdivisional lines, Township 21 South, Range 9 West, Willamette Meridian, Oregon.

The history of the official surveys pertaining to this survey is as follows:

In 1894, Alonzo Gesner, U.S. Deputy Surveyor, surveyed a portion of the subdivisional lines, as shown on the official plat of survey approved September 21, 1895.

In 1963, Norman J. McDonald, Cadastral Surveyor, remonumented certain original corner points, as described in the official field notes approved July 15, 1964.

In 1966-67, Peter A. Peterson, Cadastral Surveyor, dependently resurveyed a portion of the subdivisional lines and remonumented certain corner points, as shown on the official plat of survey accepted February 20, 1970.

In 1994-95, Boyd W. Peterson, Cadastral Surveyor, dependently resurveyed a portion of the subdivision lines, as show on the official plat of survey accepted January 24, 1997.

In 2009-10, Edith M. Forkner, Cadastral Surveyor, dependently resurveyed a portion of the subdivisional lines, as shown on the official plat of survey accepted April 20, 2011.

The following local surveys filed in the Douglas County Surveyor's Office are referred to in subsequent corner descriptions and are referenced by surveyor's last name, Professional Land Surveyor (PLS) No., and year.

<u>Date</u>	<u>Name and Registration Number</u>	<u>File Number</u>
1981	Leslie D. Roberts, PLS No. 1039	M89-74
1983	Eugene M. Wobbe, PLS No. 1093	58/281-2
1991	Douglas County Surveyor's Office	C.S. 53/66
2000	David A. Edwards. PLS No. 2339	M135-6
2001	Gary T. Smither, PLS No. 2485	65/33-26

The 1981 survey by Leslie D. Roberts, PLS No. 1039, and the 1983 survey by Eugene M. Wobbe, PLS No. 1093, established numerous iron rod line markers, 1/2 in. diam., projecting 3 ft. above ground, as indicated on the plats. These iron rods were not used for control during this survey.

The survey was executed in accordance with the specification set forth in the Manual of Surveying Instructions (2009), and the special instructions approved May 21, 2013, for Group No. 2721, Oregon.

The directions of the lines are based on the true meridian as determined by direct solar observation and Global Positioning System (GPS) techniques and carried forward by sustained angulation using conventional survey techniques. An analysis of the unadjusted field data assured a closure not exceeding 1:4000 in error. Measured distances and directions have been adjusted by computer software that incorporates a least squares adjustment routine. The adjusted bearings and distances are reported to the nearest second and 0.01 foot.

Preliminary to the resurvey the lines of the official original survey and resurveys were retraced and search was made for all corners, lines, other calls of the record, and, where available, collateral evidence of local surveys and corners. Identified corners were

T. 21 S., R. 9 W., Willamette Meridian, Oregon

perpetuated in their original positions. The retracement data were thoroughly verified and only the corner descriptions are given herein.

Each new bearing tree has a 2 1/2 inch x 1/4 inch magnetic nail (Mag Nail) driven at the base on right side center, unless otherwise noted in the corner description.

Each new corner established or remonumented has a magnet deposited in a white plastic case at the base of the stainless steel post, unless otherwise noted in the corner description.

An aluminum angle iron, 5 ft. long, was driven alongside all corners unless an existing guard post was otherwise noted in the corner description. Only those lines bounding Federal interest land were blazed.

The geographic position in NAD 1983 (2011) of the following corners as determined by ties from temporary GPS control points, established utilizing dual frequency, carrier phase GPS receivers, and processed using the National Geodetic Survey's Online Positioning User Service (OPUS):

The corner of sections 29, 30, 31, and 32:

Latitude: 43° 42' 26.40" N. Longitude: 123° 48' 15.40" W.

The 1/4 section corner of sections 27 and 28:

Latitude: 43° 42' 52.98" N. Longitude: 123° 45' 52.06" W.

The corner of sections 10, 11, 14, and 15:

Latitude: 43° 44' 56.80" N. Longitude: 123° 44' 41.51" W.

**Dependent Resurvey of a Portion of the Subdivisional Lines,
T. 21 S., R. 9 W., Willamette Meridian, Oregon**

The cor. of secs. 26, 27, 34, and 35, perpetuated and utilized by Roberts, PLS No. 1039, in 1981, and further perpetuated and utilized by Edwards, PLS No. 2339, in 2000; monumented with a steel pin, 44 ins. long, 5/8 in. diam., firmly set, with top flush with road surface, and an aluminum cap mkd.

T 21 S R 9 W	
S 27	S 26

S 34	S 35
LS 2339	
2000	

from which the remains of the original bearing trees

A decayed fir stump, size indeterminate, bears S. 20° E., 52.1 ft. dist., no marks visible.

**Dependent Resurvey of a Portion of the Subdivisional Lines,
T. 21 S., R. 9 W., Willamette Meridian, Oregon**

A very decayed hemlock stump, size indeterminate, bears S. 59° W., 31.0 ft. dist., no marks visible.

and the remains of the bearing trees mkd. by Roberts

A fir stump, 7 ft. high, 19 ins. diam., bears N. 62° E., 32.9 ft. dist., with a healed blaze.

A fir stump, 6 ft. high, 20 ins. diam., bears S. 45 1/2° E., 39.4 ft. dist., with a healed blaze.

A root hole bears S. 72 1/2° W., 33.8 ft. dist., alongside of which is an uprooted fir, 28 ins. diam., with a healed blaze.

A fir, 26 ins. diam., bears N. 44° W., 33.6 ft. dist., with a healed blaze.

At the corner point

Set a stainless steel post, 28 ins. long, 2 1/2 ins. diam., 40 ins. in the ground, with a brass cap mkd.

T 21 S	R 9 W
S 27	S 26
S 34	S 35
2013	

and new reference monuments

An iron rod, 30 ins. long, 5/8 in. diam., set 30 ins. in the ground, bears N. 20° 33' 02" E, 30.30 ft. dist., with aluminum cap mkd. RM T21S R9W 30.3 FT TO COR S26 2013, and an arrow pointing to the cor.

An iron rod, 30 ins. long, 5/8 in. diam., set 30 ins. in the ground, bears S. 45° 45' 04" E, 32.56 ft. dist., with aluminum cap mkd. RM T21S R9W 32.6 FT TO COR S35 2013, and an arrow pointing to the cor.

An iron rod, 30 ins. long, 5/8 in. diam., set 30 ins. in the ground, bears S. 49° 13' 41" W, 30.18 ft. dist., with aluminum cap mkd. RM T21S R9W 30.2 FT TO COR S34 2013, and an arrow pointing to the cor.

Remove steel pin from the area.

Corner is located in a gravel road, 5 ft. East of the center, 12 ft. wide, bears N. 10° W and South, in curve.

The S 1/16 sec. cor. of secs. 26 and 27, established by Roberts, PLS No. 1039, in 1981; and is accepted as the cor.; monumented with an iron post, 1 1/2 ins. diam., firmly set, projecting 12 ins. above ground, with a brass cap mkd.

**Dependent Resurvey of a Portion of the Subdivisional Lines,
T. 21 S., R. 9 W., Willamette Meridian, Oregon**

	PLS 1039	
T21S	S 1/16	R9W
	S 27 S 26	
	1981	

from which the bearing trees mkd. by Roberts

An alder, 19 ins. diam., bears S. 62 1/2° E., 7.9 ft. dist., with a healed blaze.

A maple, 22 ins. diam., bears S. 41 1/4° W., 25.5 ft. dist., with a healed blaze.

Alongside the cor. is an iron rod, 1/2 in. diam., projecting 3 ft. above ground.

From the corner, S. 0° 52' 36" E.,

130 ft. dist., ridge, bears N. 70° W and. S. 70° E.

260 ft. dist., ridge, bears N. 10° W. and S. 20° E.

The original line tree bet. secs. 26 and 27, a fir, 51 ins. diam., with 2 notches on the north and south faces, perpetuated by Roberts, PLS No. 1039, in 1981, and now becomes an angle point, from which the accessories mkd. by Roberts

An alder, 14 ins. diam., bears N. 83 1/4° E., 38.9 ft. dist., with scribe marks RM S26 BT visible on bark.

A fir, 55 ins. diam., bears S. 48 1/2° W., 11.1 ft. dist., with a healed blaze.

An iron post, 1 1/2 ins. diam., firmly set, projecting 24 ins. above ground, bears N. 3° 22' 15" E, 4.20 ft. dist., with a brass cap, oriented easterly, mkd. PLS 1039 WP T21S S27 S26 R9W 1981.

From the angle point

S. 0° 55' 26" E., 200 ft. dist., creek, 15 ft. wide, course N. 70° W.

The 1/4 sec. cor. of secs. 26 and 27, reestablished by proportionate measurement by Roberts, PLS No. 1039, in 1981. There is no remaining evidence of the original cor., therefore this point is accepted as a careful and faithful reestablishment of the cor.; monumented with an iron post, 1 1/2 ins. diam., firmly set, projecting 3 ins. above ground, with a brass cap mkd.

	PLS 1039	
T21S	1/4	R9W
	S 27 S 26	
	1981	

**Dependent Resurvey of a Portion of the Subdivisional Lines,
T. 21 S., R. 9 W., Willamette Meridian, Oregon**

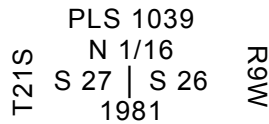
from which the bearing trees mkd. by Roberts

A fir, 55 ins. diam., bears S. 8 1/2° E., 43.8 ft. dist., with a healed blaze.

A fir, 40 ins. diam., bears N. 83° W., 21.2 ft. dist., with a healed blaze.

Alongside the cor. is an iron rod, 1/2 in. diam., projecting 3 ft. above ground.

The N 1/16 sec. cor. of secs. 26 and 27, established by Roberts, PLS No. 1039, in 1981; and is accepted as the cor.; monumented with an iron post, 1 1/2 ins. diam., firmly set, projecting 12 ins. above ground, with a brass cap mkd.



from which the bearing trees mkd. by Roberts

A fir, 15 ins. diam., bears S. 88 1/4° E., 22.9 ft. dist., with a healed blaze.

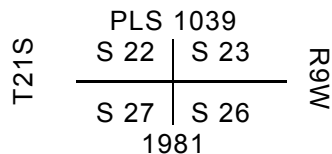
A fir, 23 ins. diam., bears N. 51 1/2° W., 16.0 ft. dist., with a healed blaze.

Alongside the cor. is an iron rod, 1/2 in. diam., projecting 3 ft. above ground

From the corner

S. 0° 22' 03" W., 115 ft. dist., creek, 5 ft. wide, course S. 70° W.

The cor. of secs. 22, 23, 26, and 27, monumented with an iron post, 1 1/2 ins. diam., firmly set, projecting 8 ins. above ground, with a brass cap mkd.



from which an original bearing tree

A fir, 58 ins. diam., bears S. 41 1/2° W., 31.0 ft. dist., with a healed blaze.

and the bearing trees mkd. by Roberts, PLS No. 1039, in 1981

An alder, 22 ins. diam., bears N. 55 1/4° E., 21.1 ft. dist., with scribe marks SW 23 visible on bark.

A fir, 33 ins. diam., bears S. 33° E., 94.1 ft. dist., with a healed blaze.

and a bearing tree mkd. by Peterson in 1994-95

23166

**Dependent Resurvey of a Portion of the Subdivisional Lines,
T. 21 S., R. 9 W., Willamette Meridian, Oregon**

A chittum, 8 ins. diam., bears N. $26\frac{3}{4}^{\circ}$ W., 18.2 ft. dist., with scribe marks R9W 22B visible on partially healed blaze.

Alongside the cor. is an iron rod, 1/2 in. diam., projecting 3 ft. above ground.

The cor. of secs. 10, 11, 14, and 15, monumented with an iron post, 2 1/2 ins. diam., firmly set, projecting 6 ins. above ground, with a brass cap mkd.

T 21 S	R 9 W
S 10	S 11
S 15	S 14
1966	

from which the remains of the original bearing trees

- A fir, 55 ins. diam., bears N. 28° E., 19.8 ft. dist., with a healed blaze.
- A decayed fir stump, size indeterminate, bears S. 30° E., 11.2 ft. dist., with a healed blaze in bark fragment.
- A fir, 21 ins. diam., bears S. 65° W., 15.8 ft. dist., with an X at breast height and a healed blaze.
- A decayed fir stump, 41 ins. diam., bears N. $68\frac{3}{4}^{\circ}$ W., 20.5 ft. dist., with a healed blaze.

and new bearing trees

- A fir, 10 ins. diam., bears S. 45° E., 14.2 ft. dist., mkd. T21S R9W S14 BT.
- A fir, 7 ins. diam., bears N. 50° W., 7.8 ft. dist., mkd. X BT.

The 1/4 sec. cor. of secs. 10 and 11, monumented with an iron post, 2 1/2 ins. diam., firmly set, projecting 10 ins. above ground, with a brass cap mkd.

T 21 S	R 9 W
1/4	
S 10	S 11
1963	

from which an original bearing tree

- A fir, 48 ins. diam., bears N. 70° E., 13.2 ft. dist., with a healed blaze and a spike at the base on right side center.

and the remains of a bearing tree mkd. by McDonald in 1963

- A decayed hemlock stump, 13 ins. diam., bears S. 66° W., 45.5 ft. dist., no marks visible.

**Dependent Resurvey of a Portion of the Subdivisional Lines,
T. 21 S., R. 9 W., Willamette Meridian, Oregon**

and a new bearing tree

A fir, 10 ins. diam., bears S. $82\frac{3}{4}^{\circ}$ W., 15.8 ft. dist., mkd. 1/4 S10 BT.

Alongside the cor. is an aluminum fence post.

From the corner, N. $0^{\circ} 24' 45''$ E.,

100 ft. dist., ridge, bears N. 80° E. and S. 80° W.

275 ft. dist., creek, 3 ft. wide, course S. 80° W.

The cor. of secs. 2, 3, 10, and 11, monumented with an iron post, 2 1/2 ins. diam., firmly set, projecting 6 ins. above ground, with a brass cap mkd.

T 21 S R 9 W	
S 3	S 2
S 10	S 11
1963	

from which the remains of the original bearing trees

A root hole bears S. 41° E., 26.4 ft. dist., alongside of which is a down fir, 38 ins. diam., no marks visible.

A decayed fir stump, size indeterminate, bears N. 44° W., 27.7 ft. dist., no marks visible.

and the remains of a bearing tree mkd. by McDonald in 1963

A decayed fir stump, size indeterminate, bears S. $72\frac{1}{2}^{\circ}$ E., 12.5 ft. dist., no marks visible.

and the bearing trees mkd. by Forkner in 2009-10

A fir, 14 ins. diam., bears N. $9\frac{1}{4}^{\circ}$ E., 24.9 ft. dist., with no scribe marks visible on partially healed blaze and a mag nail at the base on right side center.

A fir, 21 ins. diam., bears S. $60\frac{1}{4}^{\circ}$ E., 59.1 ft. dist., with scribe marks T21S R9W S11 BT visible on partially healed blaze and a mag nail at the base on right side center.

A fir, 15 ins. diam., bears S. 76° W., 42.3 ft. dist., with scribe marks R9W S1 visible on partially healed blaze and a mag nail at the base on left side center.

A fir, 30 ins. diam., bears N. $6\frac{3}{4}^{\circ}$ W., 50.1 ft. dist., with illegible scribe marks visible on partially healed blaze and a mag nail at the base on right side center.

The 1/4 sec. cor. of secs. 27 and 34, perpetuated by person(s) unknown, and further perpetuated by Edwards, PLS No. 2339, in 2000; monumented with a steel pin, 48 ins. long, 5/8 in. diam., firmly set, projecting 28 ins. above ground, with an aluminum cap mkd.

23168

Dependent Resurvey of a Portion of the Subdivisional Lines,
T. 21 S., R. 9 W., Willamette Meridian, Oregon

ROSEBURG RESOURCES
T 21 S R 9 W
S 27
1/4 _____
S 34
LS 2339
2000
COMPANY

from which the remains of an original bearing tree

- A decayed fir stump, 3 1/2 ft. high, 21 ins. diam., bears N. 19° E., 11.9 ft. dist., with a burnt healed blaze. (Record, N. 8° E.)

and the bearing trees mkd. by Edwards

- A fir, 17 ins. diam., bears S. 83 1/4° W., 9.7 ft. dist., with a healed blaze.
- A fir, 11 ins. diam., bears N. 11° W., 5.7 ft. dist., with no scribe marks visible on a partially healed blaze.

At the corner point

Set a stainless steel post, 28 ins. long, 2 1/2 ins. diam., 23 ins. in the ground, in a collar of stone, with brass cap mkd.

T 21 S R 9 W
S 27
1/4 _____
S 34
2013

Lying alongside the cor. is a disturbed iron pipe, 60 ins. long, 2 ins. diam. Remove the steel pin and the iron pipe from the area.

Corner is located on a ridge, bears N. 25° W. and S. 35° W.

The cor. of secs. 27, 28, 33, and 34, restored by person(s) unknown, and perpetuated by Edwards, PLS No. 2339, in 2000. There is no remaining evidence of the original cor. and this position is accepted as the best available evidence of the cor.; monumented with a steel pin, 5/8 in. diam., firmly set, projecting 6 ins. above ground, with an aluminum cap mkd.

ROSEBURG RESOURCES
T 21 S R 9 W
28 | 27
_____|_____
33 | 34
LS 2339
2000
COMPANY

**Dependent Resurvey of a Portion of the Subdivisional Lines,
T. 21 S., R. 9 W., Willamette Meridian, Oregon**

from which the remains of the bearing trees mkd. by Edwards

A root hole bears N. 38° E., 8.6 ft. dist., alongside of which is a down alder, 11 ins. diam., with illegible scribe marks visible on open decayed blaze.

An alder, 18 ins. diam., bears S. 30 3/4° E., 10.0 ft. dist., with scribe marks S34 BT visible on partially healed blaze.

An alder, 13 ins. diam., bears S. 54 3/4° W., 10.4 ft. dist., with scribe marks S33 BT visible on partially healed blaze.

An alder, 12 ins. diam., bears N. 67 3/4° W., 15.5 ft. dist., with scribe marks S28 BT visible on decayed partially healed blaze.

At the corner point

Set a stainless steel post, 28 ins. long, 2 1/2 ins. diam., 23 ins. in the ground, directly over the steel pin, with a brass cap mkd.

T 21 S	R 9 W
S 28	S 27
S 33	S 34
2013	

from which a new bearing tree

An alder, 16 ins. diam., bears N. 80° E., 27.1 ft. dist., mkd. T21S R9W S27 BT on bark.

Lying alongside the cor. is a disturbed iron pipe, 40 ins. long, 2 ins. diam. Remove the iron pipe from the area.

From the corner

N. 0° 38' 09" E.,

75 ft. dist., enter creek bottom, bears N. 65° W. and S. 50° E.

110 ft. dist., creek, 3 ft. wide, course N. 40° W.

S. 89° 28' 00" E.,

65 ft. dist., enter creek bottom, bears N. 50° W. and S. 30° E.

120 ft. dist., creek, 6 ft. wide, course N. 40° W.

280 ft. dist., leave creek bottom, bears N. 60° W. and S. 45° E.

A search was made for all original line trees along the South 1/2 mile bet. secs. 27 and 28 and none were recovered.

23170

**Dependent Resurvey of a Portion of the Subdivisional Lines,
T. 21 S., R. 9 W., Willamette Meridian, Oregon**

The 1/4 sec. cor. of secs. 27 and 28, monumented with an iron post, 2 1/2 ins. diam., firmly set, projecting 14 ins. above ground, with a brass cap mkd.

1/4
S 28 | S 27
T 21 S R 9 W
1967

from which the remains of an original bearing tree

A decayed fir stump, 31 ins. diam., bears S. 70° W., 40.3 ft. dist., with scribe marks
1/4 S visible on open decayed blaze.

and the remains of the bearing trees mkd. by Peterson in 1966-67

A fir, 28 ins. diam., bears N. 39 3/4° E., 59.4 ft. dist., with a healed blaze.
(Record, N. 42° E.

A fir stump, 24 ins. diam., bears S. 10° W., 21.5 ft. dist., with a healed blaze.

and a new bearing tree

A hemlock, 16 ins. diam., bears S. 22 1/2° E., 14.5 ft. dist., mkd. 1/4 S27 BT.

No suitable trees in sec. 28.

Alongside the cor. is an aluminum fence post and an iron pipe, lying loose, 60 ins. long,
2 ins. diam. Remove the iron pipe from the area.

From the corner, S. 0° 38' 09" W.,

130 ft. dist., graveled road, 10 ft. wide, bears N. 30° W. and S. 35° E.

215 ft. dist., ridge, bears N. 35° W. and S. 35° E.

A search was made for all original line trees along the South 1/2 mile bet. secs. 27 and 28
and none were recovered.

The 1/4 sec. cor. of secs. 3 and 10, perpetuated by person(s) unknown, monumented with
an iron post, 2 1/2 ins. diam., firmly set, projecting 1 in. above ground, with a brass cap
mkd.

S 3
1/4 ———
S 10
T 21 S R 9 W
1966

from which the remains of the original bearing trees

A fir, 90 ins. diam., bears N. 49° E., 10.6 ft. dist., no marks visible.

**Dependent Resurvey of a Portion of the Subdivisional Lines,
T. 21 S., R. 9 W., Willamette Meridian, Oregon**

A decayed cedar stump, 21 ins. diam., bears S. 15° E., 30.4 ft. dist., with a healed blaze.

and a bearing tree mkd. by person(s) unknown

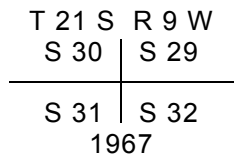
A hemlock, 27 ins. diam., bears N. 42° W., 46.3 ft. dist., with a healed blaze and a spike at the base on right side center.

and a new bearing tree

A fir, 9 ins. diam., bears S. 35 3/4° W., 18.8 ft. dist., mkd. 1/4 S10 BT.

Alongside the cor. is an aluminum fence post.

The cor. of secs. 29, 30, 31, and 32, perpetuated by the Douglas County Surveyor's Office, in 1991; monumented with an iron post, 2 1/2 ins. diam., firmly set, projecting 4 ins. above ground, with a brass cap mkd.



from which the remains of the original bearing trees

A decayed fir stump, size indeterminate, bears N. 17° E., 58.1 ft. dist., with a healed blaze.

A decayed fir stump, 40 ins. diam., bears N. 19° W., 15.8 ft. dist., with a healed decayed blaze with a sheet metal cap.

and the bearing trees mkd. by Peterson in 1966-67

A hemlock, 27 ins. diam., bears S. 60° E., 87.1 ft. dist., with a healed blaze.

A cedar, 28 ins. diam., bears S. 84° W., 42.9 ft. dist., with a healed blaze.

and the bearing trees mkd. by the Douglas County Surveyor's Office

A cedar, 39 ins. diam., bears S. 14 3/4° E., 51.4 ft. dist., with a healed blaze.

A cedar, 37 ins. diam., bears N. 40 1/4° W., 26.4 ft. dist., with a healed blaze.

and a new bearing tree

A hemlock, 20 ins. diam., bears N. 52 1/4° E., 29.7 ft. dist., mkd. T21S R9W S29 BT and a Mag Nail driven at the base on left side center.

Alongside the cor. is an aluminum fence post.

**Dependent Resurvey of a Portion of the Subdivisional Lines,
T. 21 S., R. 9 W., Willamette Meridian, Oregon**

The 1/4 sec. cor. of secs. 29 and 30, perpetuated by Wobbe, PLS No. 1093, in 1983; monumented with an iron post, 1 1/4 ins. diam., firmly set in concrete, with top flush with the surface of the ground, with a brass cap mkd.

T21S	PLS 1093 1/4 30 29 1983	R9W
------	------------------------------------	-----

from which the remains of an original bearing tree

- A decayed fir stump, 38 ins. diam., bears S. 41° W., 9.9 ft. dist., with scribe marks 1/4 S BT visible on open blaze. (Record, S. 41° E.)

and the remains of the bearing trees mkd. by Wobbe

- A fir, 23 ins. diam., bears S. 42 1/2° E., 13.2 ft. dist., with a healed blaze.
- A root hole bears N. 89° W., 8.8 ft. dist., alongside of which is a down hemlock, size indeterminate, with no marks visible and a metal tag.

and a new bearing tree

- A maple, 13 ins. diam., bears N. 40° E., 10.5 ft. dist., mkd. 1/4 S29 BT on bark.

No suitable trees in sec. 30.

Alongside the cor. is an iron rod, 1/2 in. diam., projecting 3 ft. above ground.

The N 1/16 sec. cor. of secs. 29 and 30, established by Wobbe, PLS No. 1093, in 1983, and is accepted as the cor.; monumented with an iron post, 1 1/4 ins. diam., firmly set in concrete, with top flush with the surface of the ground, with a brass cap mkd.

T21S	PLS 1093 N 1/16 30 29 1983	R9W
------	---------------------------------------	-----

from which the remains of the bearing trees mkd. by Wobbe

- A fir, 15 ins. diam., bears N. 57° E., 13.4 ft. dist., with a healed blaze.
- A decayed fir stump, 9 ins. diam., bears N. 13° W., 11.8 ft. dist., no marks visible.

and a new bearing tree

- An alder, 6 ins. diam., bears S. 33° W., 18.7 ft. dist., mkd. X BT on bark.

Alongside the cor. is an iron rod, 1/2 in. diam., projecting 3 ft. above ground.

**Dependent Resurvey of a Portion of the Subdivisional Lines,
T. 21 S., R. 9 W., Willamette Meridian, Oregon**

The cor. of secs. 19, 20, 29, and 30, perpetuated by Smither, PLS No. 2485, in 2000; monumented with an iron post, 2 1/2 ins. diam., firmly set, projecting 2 ins. above ground, with a brass cap mkd.

T 21 S	R 9 W
S 19	S 20
S 30	S 29
1967	

from which the remains of the original bearing trees

- A cedar stump, 7 ft. high, 39 ins. diam., bears N. 18 1/2° E., 11.2 ft. dist., no marks visible.
- A fir, 37 ins. diam., bears S. 61° E., 13.2 ft. dist., with a healed blaze.
- A decayed fir stump, size indeterminate, bears S. 12° W., 13.9 ft. dist., with scribe marks T visible on open decayed blaze.

and a bearing tree mkd. by Peterson in 1966-67

- A fir, 25 ins. diam., bears N. 85° W., 38.9 ft. dist., with a healed blaze.

and a bearing tree mkd. by Smither

- An alder, 18 ins. diam., bears N. 25 1/2° W., 16.3 ft. dist., with scribe marks T21S R9W S19 BT visible on bark with a spike at the base on right side center.

No suitable trees in sec. 20.

Alongside the cor. is an aluminum fence post.
