

OFFICIALLY FILED: 7/9/2014

TOWNSHIP 29 SOUTH, RANGE 9 WEST, OF THE WILLAMETTE MERIDIAN, OREGON

RETRACEMENT

This plat constitutes the entire record of the retracement of a portion of the subdivisional lines, Township 29 South, Range 9 West, Willamette Meridian, Oregon.

A history of official surveys pertaining to this retracement is as follows:

In 1855, Dennis Hathorn, U.S. Deputy Surveyor, surveyed a portion of the subdivisional lines as shown on the official plat of survey approved July 7, 1856.

In 1909, William M. Porter, Cadastral Surveyor, surveyed a portion of the subdivisional lines as shown on the official plat of survey approved March 19, 1909.

In 1968, Peter A. Peterson, Cadastral Surveyor, resurveyed a portion of the subdivisional lines as shown on the official plat of survey accepted March 12, 1971.

In 2003, A. Bert Skeesick, Cadastral Surveyor, resurveyed a portion of the subdivisional lines and subdivided sections 23 and 27 as shown on the official plat of survey accepted January 19, 2007.

In 2004-05, A. Bert Skeesick, Cadastral Surveyor, resurveyed a portion of the subdivisional lines as shown on the official plat of survey accepted August 18, 2010.

The following local surveys and corner restorations filed in the Douglas County Surveyor's Office are referred to in the subsequent corner descriptions and are referenced by surveyor's last name, official title or Professional Land Surveyor (PLS) No., and date.

The direction of the lines are based on the true meridian as determined by Global Positioning System (GPS) techniques. All measurements along the lines were derived through the use of GPS and conventional survey techniques. Measured distances and directions have been adjusted by computer software that incorporates a least squares adjustment routine. The adjusted mean bearings and mean horizontal ground elevation distances are reported to the nearest second and 0.01 foot.

The lottings and areas are as shown on the plats approved July 7, 1856, and March 19, 1909.

The lines of the official original survey and resurvey were retraced and a search was made for oil corners, lines, other calls of record, and where available, collateral evidence of local surveys and corners. Identified corners were remonumented in their original positions. The retracement data were thoroughly verified and only the true line field data are given hereon.

The geographic positions shown hereon were determined by direct observation utilizing dual frequency, carrier phase GPS receivers, and processed using the National Geodetic Survey's Online Positioning User Service (OPUS).

The survey was executed in accordance with the specification set forth in the Manual of Surveying Instructions (2009), and the special instructions approved April 28, 2010, for Group No. 2500, Oregon, Administrative File Number 1302, by George M. Winter, Cadastral Surveyor, beginning March 28, 2013, and completed May 14, 2013. He was assisted by NMI Dunning, and Marc A. Montpas, Surveying Technicians.

UNITED STATES DEPARTMENT OF THE INTERIOR
BUREAU OF LAND MANAGEMENT

Portland, Oregon

The survey represented by this plat, having been correctly executed in accordance with the requirements of law and the regulations of this Bureau, is hereby accepted.

For the Director

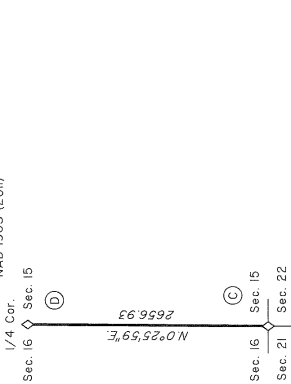
Mary J. M. Hest

Chief Cadastral Surveyor of Oregon

June 26, 2014

Date

Latitude 43°02'43.200"N
Longitude 123°42'41.139"W
NAD 1983 (2011)



Sec. 15	Sec. 16	Sec. 21	Sec. 22
Sec. 27	Sec. 28	Sec. 33	Sec. 34

LOCATION DIAGRAM
(NOT TO SCALE)



Ⓒ The cor. of secs. 15, 16, 21, and 22, perpetuated by the Douglas County Surveyor's Office in 1959, monumented with an iron post, 1/4 ins. diam., firmly set, projecting 8 ins. above ground, with brass cap mkd.

COUNTY SURVEYORS OFFICE
T29S R9W
S16 | S15
S21 | S22
1959

from which the remains of an original bearing tree

A decayed stump, 42 ins. diam., bears N. 43° W., 19.8 ft. dist., with no marks visible, and the remains of bearing trees mkd. by the Douglas County Surveyors Office

A fir, 30 ins. diam., bears N. 68° E., 44.2 ft. dist., with a heeled blaze.

A fir snag, 26 ins. diam., bears S. 15° E., 16.5 ft. dist., with a heeled blaze.

A fir, 27 ins. diam., bears S. 63° W., 9.5 ft. dist., with a heeled blaze.

A decayed fir stump, 22 ins. diam., bears N. 35° W., 40.3 ft. dist., with no marks visible. (Record, N. 37° W.)

and new reference monuments

A steel reinforcing rod, 30 ins. long, 5/8 in. diam., driven 27 ins. in the ground, bears S. 2° 57' 15\"

A steel reinforcing rod, 30 ins. long, 5/8 in. diam., driven 25 ins. in the ground, bears N. 53° 00' 56\"

pointing to the cor.

Ⓓ The 1/4 sec. cor. of secs. 15 and 16, monumented with an iron post, 2 1/2 ins. diam., firmly set, projecting 2 ins. above ground, with brass cap mkd.

1/4
S16 | S15
T29S R9W
1968

from which the remains of bearing trees mkd. by Peterson

A fir, 19 ins. diam., bears S. 57° E., 7.3 ft. dist., with a heeled blaze.

A fir snag, 8 ins. diam., bears N. 49° W., 10.2 ft. dist., with a heeled blaze.

and a bearing tree mkd. by Skeesick in 2004-2005

A hemlock, 8 ins. diam., bears N. 14° W., 30.8 ft. dist., with a heeled double blaze.

FILED

Date: 8/29/2014 By: JC

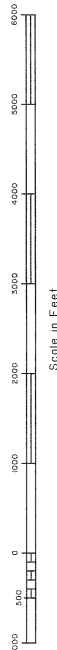
This survey consists of:

Map: T29-9W 2014-1

Narrative: VOL 58 PGS 23055

Corner Rpt. THIS PLAT REPRESENTS THE ENTIRE RECORD OF THE DEPENDENT RESURVEY

DOUGLAS COUNTY
SURVEYOR



A. Bert Skeesick
Cadastral Surveyor
Date: 6/23/14

I, George M. Winter, Cadastral Surveyor, HEREBY CERTIFY upon honor, that in pursuance of special instructions bearing the approval date of the 28th day of April, 2010, and the assignment instructions bearing the date of the 19th day of March, 2013, I have retraced a portion of the subdivisional lines, Township 29 South, Range 9 West, Willamette Meridian, Oregon, which is represented upon this plat as having been executed by me and under my direction; and that said survey has been made in strict conformity with said special instructions; and that said survey has been made in strict conformity with said special instructions; the Manual of Surveying Instructions; and in the specific manner described on this plat.