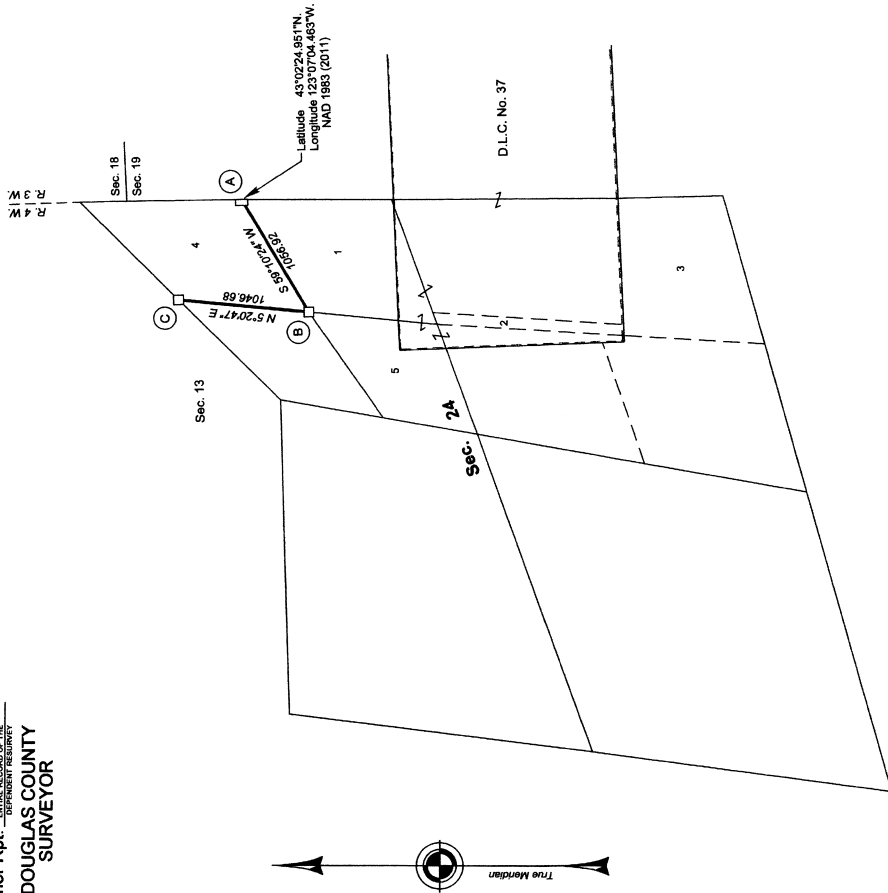


FILED
 Date: 8/6/2014 By: JC
 This survey consists of:
 Map: T29-4W 2014-1
 Narrative: VOL. 58 PGS 2305
THIS MAP REPRESENTS THE
 OFFICIAL RESURVEY
 Corner Rpt.
 DOUGLAS COUNTY
 SURVEYOR

TOWNSHIP 29 SOUTH, RANGE 4 WEST, OF THE WILLAMETTE MERIDIAN, OREGON

RETRACEMENT



(A) The N 1/16 sec. cor. of sec. 24 only, on the E. body, of the T₂₉, monumented with an iron post, 2 1/2 ins. diam., firmly set, projecting 7 ins. above ground, with brass cap mkt.

N 1/16 S 24 1967
 from which the remains of a bearing tree mkt. by Woodford, PE No. 622, in 1956
 A sawed, decayed fir stump, 21 ins. diam., bears S. 1 1/2° E., 20.1 ft. dist., with a healed blaze.
 and bearing trees mkt. by Roseberry and Jelley in 1967-77
 A fir, 28 ins. diam., bears S. 52 1/2° W., 70.6 ft. dist., with a healed blaze.
 A fir, 21 ins. diam., bears N. 75° W., 97.7 ft. dist., with a healed blaze.

(B) Corner is located on a SE. slope, 25 ft. N. 87° E. of the corner of 4-strand barbed wire fences extending S. and SW.
 (C) The NE 1/16 sec. cor. of sec. 24, monumented with an iron post, 2 1/2 ins. diam., firmly set, projecting 5 ins. above ground, with brass cap mkt.

NW 1/16 S24 1977
 from which the bearing tree mkt. by Roseberry and Jelley in 1967-77
 A fir, 21 ins. diam., bears N. 23 1/4° W., 30.7 ft. dist., with a healed blaze. (Record, N. 25 3/4° W.)

From this corner, a point established by Woodford, PE No. 622, in 1956, bears S. 84° 02' 58" W., 3.71 ft. dist., (Record, S. 82° 45' W., 3.3 ft. dist.), monumented with an iron pipe, 3/4 in. diam., firmly set, bent to the west, projecting 8 ins. above ground, with no cap, from which the remains of bearing trees mkt. by Woodford
 A view, 9 ins. diam., bears N. 60° E., 24.5 ft. dist., with a healed blaze. (Record, N. 48° E., 18.5 ft.)

A roothole bears N. 35° W., 7.6 ft. dist., lying downhill of which is a fallen, decayed yew snag, 10 ins. diam., with a hollowed blaze.
 Corner is located on a SW. slope, 25 ft. E. of a creek, 2 ft. wide, course South.

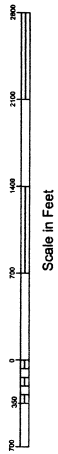
(C) The E 1/16 sec. cor. of secs. 13 and 24, monumented with an iron post, 2 1/2 ins. diam., firmly set, projecting 4 ins. above ground, (alongside of which is an iron pipe, 2 1/2 ins. diam., firmly set, projecting 19 ins. above ground), with brass cap mkt.

E 1/16 S24 1967
 from which the remains of bearing trees mkt. by Woodford, PE No. 622, in 1956
 A roothole bears N. 10 1/2° E., 8.8 ft. dist., alongside of which is an uprooted mesquite stump, 21 ins. diam., with no marks visible and metal cap.
 A decayed, fir stump, size indeterminate, bears South, 7.3 ft. dist., with no marks visible.
 and a bearing tree mkt. by Roseberry and Jelley in 1967-77
 A yew, 11 ins. diam., bears S. 25° E., 18.5 ft. dist., with scribe marks E 1/16 S24 B1 visible on a partially healed blaze.
 and a new bearing tree
 A fir, 6 ins. diam., bears N. 89 3/4° W., 12.9 ft. dist., mkt. E 1/16 S13 B1.

Corner is located on a SE. slope, 1 ft. N. 10° E. of the corner of 4-strand barbed wire fences extending S. and SW., and 53 ft. N. of a draw, drains S. 55° W.

I, A. Bert Sheesick, Cadastral Surveyor, HEREBY CERTIFY, upon honor, that in pursuance of special authority granted me on the 15th day of April, 2010, and the assignment instructions bearing the date of the 15th day of April, 2012, I have duly and lawfully resurveyed the section 24, Township 29 South, Range 4 West, Willamette Meridian, Oregon, which is represented upon this plat as having been executed by me and under my direction; and that said survey has been made in strict conformity with said special instructions, the Manual of Surveying Instructions, and in the specific manner described on this plat.

A. Bert Sheesick
 Cadastral Surveyor
 Date: 6/2/2014



Scale in Feet

This plat constitutes the entire record of the retracement of a portion of the subdivision-section lines of section 24, township 29 South, Range 4 West, Willamette Meridian, Oregon.

The history of the official surveys pertaining to this retracement is as follows:

In 1967-77, Lynn M. Roseberry and James E. Jelley, Cadastral Surveyors, resurveyed a portion of the east boundary, subdivisional lines, and claim lines, and subdivided sections 9, 21, and 24 as shown on the official plat of survey accepted October 11, 1976.

The following survey, filed in the Douglas County Surveyor's Office, is referred to in subsequent corner descriptions and is referenced by surveyor's last name, Professional Engineer (PE) No., and year:

Date Name and Registration Number File Number
 1956 Edwin S. Woodford, PE No. 622 C.S. 427/05

The directions of the lines are based on the true meridian as determined by Global Positioning System (GPS) technology using conventional survey techniques. All measurements along the lines were derived through the use of GPS and conventional survey techniques. Measured distances and directions have been adjusted by computer software that incorporates a least squares adjustment routine. The adjusted mean bearings and mean horizontal ground elevation distances are reported to the nearest second and 0.01 foot.

The lotings and areas are as shown on the plat accepted October 11, 1976.

The lines of the official resurvey were retraced and a search was made for all corners, lines, other calls of record, and where available, collateral evidence of local surveys and corners. The retracement data were thoroughly verified and only the true line field data are given hereon.

The geographic position shown hereon was determined by direct coordinate utilization using frequency control phase GPS receivers, using for control National Spatial Reference System Continuously Operating Reference Station (CORS) "DODSON BUTTE CORS ARP", and National Cooperative CORS Network Station "ROSEBURG COOP CORS ARP".

The survey was executed in accordance with the specification set forth in the Manual of Surveying Instructions (CPL 6) and the special instructions accepted April 20, 2010, by A. Bert Sheesick, Administrative File No. 1211, Oregon, by A. Bert Sheesick, Cadastral Surveyor, beginning September 24, 2013, and completed November 4, 2013. He was assisted by Robert NMI Durning and Marc A. Montpas, Surveying Technicians.

LEGEND
 Corner previously established or reestablished

UNITED STATES DEPARTMENT OF THE INTERIOR
 BUREAU OF LAND MANAGEMENT

Portland, Oregon

The survey represented by this plat, having been correctly executed in accordance with the requirements of law and the regulations of this Bureau, is hereby accepted.

For the Director
Mary J. M. Hurd
 Chief Cadastral Surveyor of Oregon

June 4, 2014
 Date