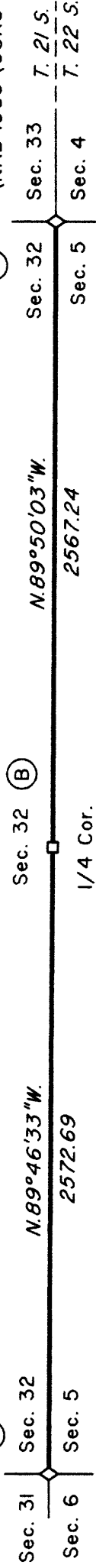


TOWNSHIP 22 SOUTH, RANGE 7 WEST, OF THE WILLAMETTE MERIDIAN, OREGON

RETRACEMENT

Latitude 43°41'35.91"N
Longitude 123°33'51.09"W
(NAD 1983 (CORS 96))

Latitude 43°41'35.74"N
Longitude 123°32'41.14"W
(NAD 1983 (CORS 96))



(A) The cor. of secs. 4, 5, 32, and 33, on the N. bdy. of the Tp., perpetuated by Baker, PLS No. 2488, in 2003, monumented with an iron post, 1 1/4 ins. diam., firmly set, in a collar of stone, projecting 12 ins. above ground, with brass cap mkd.

COUNTY SURVEYORS OFFICE

T 21 S
S 32 S 33 R
S 5 S 4 W
T 22 S
1962

from which the remains of the original bearing trees

A decayed fir stump, 60 ins. diam., bears N. 19° E., 6.5 ft. dist., with no marks visible. (Record, N. 50° E., 4.0 ft.)

A burnt, hollowed cedar snag, size indeterminate, bears S. 30° E., 12.4 ft. dist., with no marks visible. (Record, 14.5 ft.)

A sawed, decayed fir stump, 44 ins. diam., bears S. 45° W., 28.4 ft. dist., with fragmentary scribe marks visible on an open blaze and a metal cover.

and remains of bearing trees mkd. by Godfrey, Deputy County Surveyor, in 1962

A fir, 38 ins. diam., bears N. 62° E., 55.8 ft. dist., with a healed blaze. (Record, N. 63 1/2° E., 57.4 ft.)

A hemlock, 18 ins. diam., bears S. 24° E., 14.5 ft. dist., with a healed blaze. (Record, S. 17 3/4° E.)

A fir, 22 ins. diam., bears S. 34° W., 14.5 ft. dist., with a healed blaze. and a bearing tree mkd. by Baker

A fir, 13 ins. diam., bears N. 88 1/2° W., 26.7 ft. dist., with a healed blaze.

Corner is located on a SE. slope, 63 ft. E. of the top of a spur, slopes S. 10° W., and 210 ft. E. of a ravine, drains S. 22° E.

(B) The 1/4 sec. cor. of secs. 5 and 32, on the N. bdy. of the Tp., monumented with an iron post, 2 1/2 ins. diam., firmly set, projecting 5 ins. above ground, with brass cap mkd.

T 21 S
S 32
1/4
S 5
T 22 S R 7 W
1964

from which the bearing trees mkd. by Brooks and Jelley

A fir, 21 ins. diam., bears S. 7° E., 27.1 ft. dist., with a healed blaze.

A fir, 33 ins. diam., bears N. 45° W., 13.9 ft. dist., with a healed blaze.

(C) The cor. of secs. 5, 6, 31, and 32, on the N. bdy. of the Tp., monumented with an iron post, 2 1/2 ins. diam., firmly set, projecting 5 ins. above ground, with brass cap mkd.

T 21 S R 7 W
S 31 S 32
S 6 S 5
T 22 S
1964

from which the remains of bearing trees mkd. by Brooks and Jelley

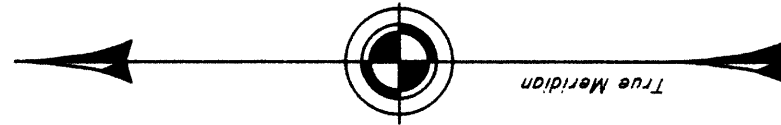
A fir, 18 ins. diam., bears N. 63 1/2° E., 12.3 ft. dist., with a healed blaze.

A fir, 22 ins. diam., bears S. 73° E., 13.9 ft. dist., with a healed blaze.

A sawed, decayed fir stump, 13 ins. diam., bears S. 36 3/4° W., 10.9 ft. dist., with a healed blaze.

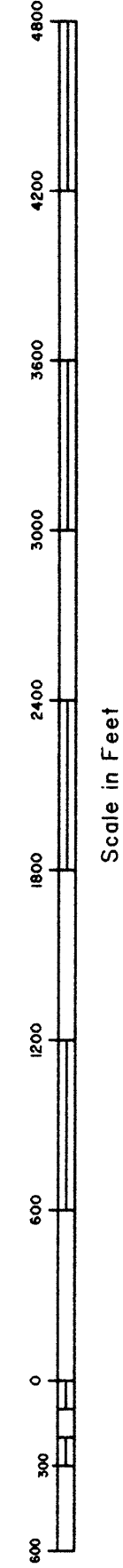
A fir, 42 ins. diam., bears N. 5° W., 26.4 ft. dist., with a healed blaze. and a new bearing tree

A fir, 4 ins. diam., bears S. 74 1/4° W., 28.6 ft. dist., mkd. X BT.



LEGEND

- ◊ Original corner previously remonumented
- Corner previously established or reestablished



I, A. Bert Skeesick, Cadastral Surveyor, HEREBY CERTIFY upon honor, that in pursuance of special instructions bearing the approval date of the 28th day of April, 2010, and the assignment instructions bearing the date of the 8th day of May, 2012, I have retraced a portion of the north boundary, Township 22 South, Range 7 West, Willamette Meridian, Oregon, which is represented upon this plat as having been executed by me and under my direction; and that said survey has been made in strict conformity with said special instructions, the Manual of Surveying Instructions, and in the specific manner described on this plat.

[Signature]
Cadastral Surveyor
Date January 9, 2013

Date

For the Director

[Signature]
Chief Cadastral Surveyor of Oregon

January 10, 2013
[Signature]

This plat constitutes the entire record of the retracement of a portion of the north boundary, Township 22 South, Range 7 West, Willamette Meridian, Oregon.

The history of the official surveys pertaining to this survey is as follows:

In 1855, Harvey Gordon and Charles T. Gardner, U.S. Deputy Surveyors, surveyed the north boundary as shown on the official plat of survey approved February 20, 1856.

In 1884, William P. Wright, U.S. Deputy Surveyor, retraced a portion of the south boundary and surveyed a portion of the subdivisional lines, T. 21 S., R. 7 W., as shown on the official plat of survey approved February 25, 1885.

In 1897, Carl S. Nicklin, U.S. Deputy Surveyor, surveyed a portion of the subdivisional lines as shown on the official plat of survey approved May 25, 1898.

In 1964, Floyd A. Brooks and James E. Jelley, Cadastral Surveyors, resurveyed a portion of the south boundary and subdivisional lines and remonumented a certain original corner point, T. 21 S., R. 7 W., as shown on the official plat of survey accepted August 20, 1965.

In 2005-06, Edith M. Forkner, Cadastral Surveyor, resurveyed a portion of the west boundary and subdivisional lines and subdivided sections 20 and 30, T. 21 S., R. 7 W., as shown on the official plat of survey accepted March 16, 2009.

The following survey and corner restoration filed in the Douglas County Surveyor's Office are referred to in subsequent corner descriptions and are referenced by the surveyor's last name, official title or Professional Land Surveyor (PLS) No., and year.

Date	Name and Registration Number	File Number
1962	Milo Godfrey, Deputy Co. Surveyor	CS 52/14
2003	Ted C. Baker, PLS 2488	MI41-58

The direction of the lines are based on the true meridian as determined by Global Positioning Systems (GPS) techniques, carried forward by sustained angulation using conventional survey techniques. All measurements along the lines were derived through the use of GPS and conventional survey techniques. Measured distances and directions have been adjusted by computer software that incorporates a least squares adjustment routine. The adjusted mean bearings and mean horizontal ground elevation distances are reported to the nearest second and 0.01 foot.

The lines of the official survey, retracement, and resurveys were retraced and a search was made for all corners, lines, other calls of record, and where available, collateral evidence of local surveys and corners. Identified corners were perpetuated in their original positions. The retracement data was thoroughly verified and only the true line field data are given hereon.

The geographic positions shown hereon were determined by ties from temporary GPS control points utilizing dual frequency, carrier phase GPS receivers, and processed using the National Geodetic Survey's Online Positioning User Service (OPUS).

The survey was executed in accordance with the specification set forth in the Manual of Surveying Instructions (2009), and the special instructions approved April 28, 2010, for Group No. 2500, Oregon, Administrative File Number 1206, by A. Bert Skeesick, Cadastral Surveyor, beginning June 6, 2012, and completed June 18, 2012. He was assisted by Robert NMI Durning, Thomas A. Hollamon, and Marc A. Montpas, Surveying Technicians.

UNITED STATES DEPARTMENT OF THE INTERIOR
BUREAU OF LAND MANAGEMENT

Portland, Oregon

The survey represented by this plat, having been correctly executed in accordance with the requirements of law and the regulations of this Bureau, is hereby accepted.

OFFICIALLY FILED: 1/25/2013