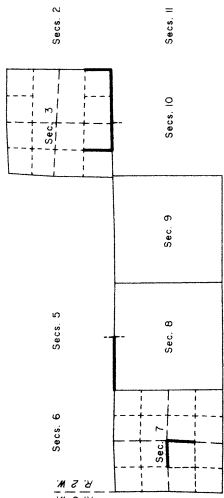


FILED  
 Date: 1/29/2013 By: JC  
 This survey consists of:  
 Map: VOL. 58 PAGE  
 Remarks: 22947-22948  
 TITLE AND COMMENTS THE  
 CORNER REPORT  
 Douglas County  
 Surveyor

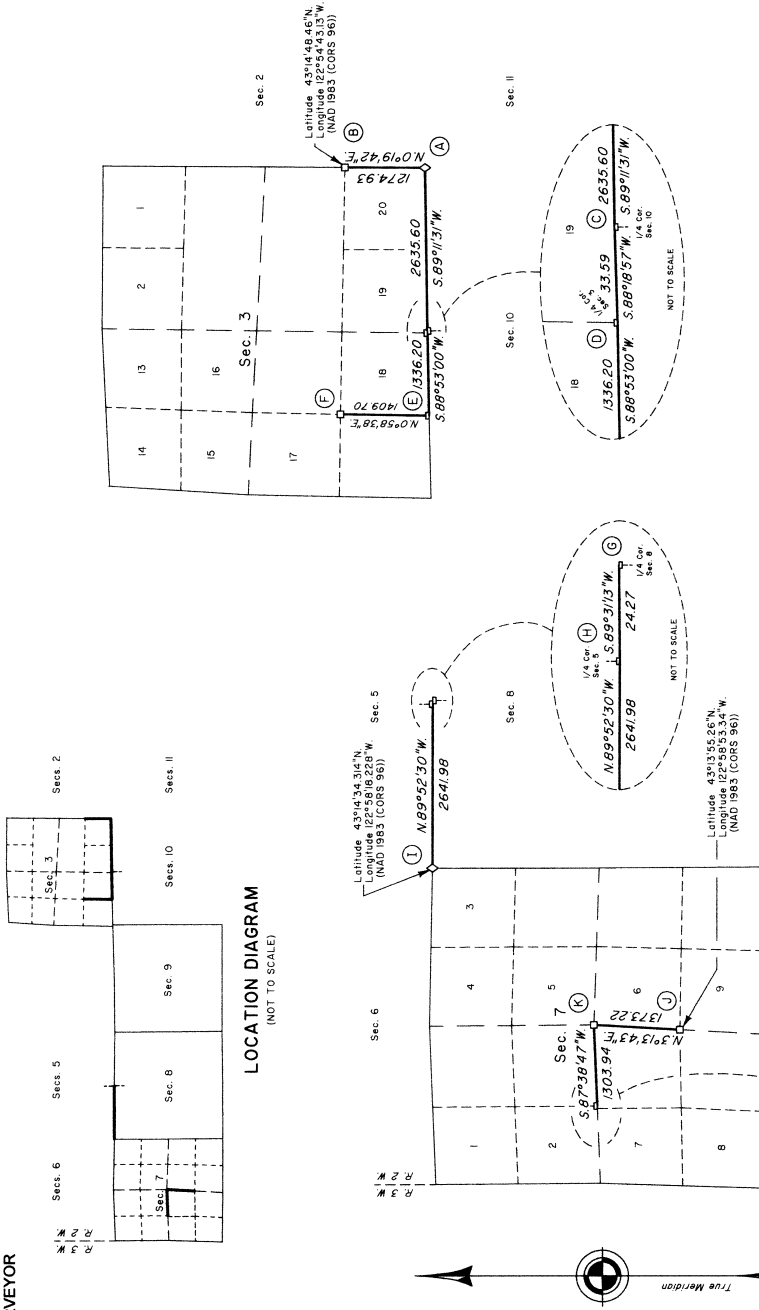
TOWNSHIP 27 SOUTH, RANGE 2 WEST, OF THE WILLAMETTE MERIDIAN, OREGON

SHEET 1 OF 2

RETRACEMENT



LOCATION DIAGRAM  
 (NOT TO SCALE)



The history of official surveys pertaining to this retracement is as follows:

- In 1882, Samuel C. Flint, U.S. Deputy Surveyor, surveyed a portion of the subdivisional lines as shown on the official plat of survey approved December 7, 1882.
- In 1907, Charles E. Roberts, U.S. Deputy Surveyor, retraced a portion of the subdivisional lines and surveyed a portion of the subdivisional lines as shown on the official plat of survey approved January 25, 1908.
- In 1957, Harold D. Corbin, Cadastral Surveyor, resurveyed portions of the north boundary and subdivisional lines as shown on the official plat of survey accepted May 7, 1959 (Plat suspended February 21, 1978).
- In 1971, Peter A. Peterson and Daniel L. Berry, Cadastral Surveyors, resurveyed a portion of the subdivisional lines and subdivided section 8 as shown on the plat of official survey accepted March 6, 1973.
- In 1978, James E. Jolley, Cadastral Surveyor, correctively resurveyed a portion of the subdivisional lines as shown on the official plat of survey accepted January 28, 1980.
- In 1979, Wayne L. Rogers, Cadastral Surveyor, resurveyed portions of the west boundary and subdivisional lines and subdivided sections 3, 6, and 7, as shown on the official plat of survey accepted June 16, 1983.
- The following local surveys filed in the Douglas County Surveyor's Office are referred to in subsequent corner descriptions and are referenced by surveyor's last name, official title or Professional Land Surveyor (PLS) number, and year.

Date	Name and Registration Number	File Number
1962	Milo E. Godfrey Deputy Co. Surveyor	CS 49/28
1968	Douglas County Surveyor's Office	CS 54/40
1978	Romance E. Ware PLS 1005	M70-24
1984	Ronald G. Geister PLS 1988	M 90-55
1989	Glen S. Baughman PLS 536	CS 63/85

*Samuel B. Shubert*  
 Cadastral Surveyor  
 Date: November 1, 2012



Scale in Feet

This plat constitutes the entire record of the retracement of portions of the subdivisional lines and subdivision of section lines in sections 3 and 7, Township 27 South, Range 2 West, Willamette Meridian, Oregon.

The directions of the lines are based on the true meridian as determined by a combination of Global Positioning System (GPS) techniques and direct solar observation, carried forward by sustained angulation using conventional survey techniques. All measurements along the lines were adjusted through the use of GPS and conventional survey techniques. Measured distances and directions have been adjusted by computer software that incorporates a least squares adjustment routine. The adjusted mean bearings and mean horizontal ground elevation distances are reported to the nearest second and 0.01 foot.

The lines of the official original surveys and resurveys were retraced and search was made for all corners, lines, other calls of the record, and, where available, collateral evidence of local surveys and corners. Identified corners were perpetuated in their original positions. The retracement data were thoroughly verified and only the true line field data are given herein.

Each new bearing tree has a 2 1/2 x 1/4 in. magnetic nail (Mag Nail) driven at the base on right side center, unless otherwise noted in the corner description.

Only those lines bounding Federal interest land were blazed.

The geographic positions shown hereon were determined by the use of temporary GPS control points and by direct occupation utilizing dual frequency carrier phase GPS receivers, and processed using the National Geospatial Survey's Online Positioning User Service (OPUS).

The survey was executed in accordance with the specifications set forth in the Manual of Surveying Instructions (2009), and the special instructions approved April 28, 2010, for Group No. 2500, Administrative File No. 1105, Oregon, by Kenneth W. Saveland, Cadastral Surveyor, beginning August 25, 2011, and completed November 14, 2011. He was assisted by Robert NMI Durning and Thomas A. Hollamon, Surveying Technicians.

- LEGEND
- Original corner previously monumented
  - Corner previously established or reestablished

UNITED STATES DEPARTMENT OF THE INTERIOR  
 BUREAU OF LAND MANAGEMENT  
 Portland, Oregon

The survey represented by this plat, having been correctly executed in accordance with the requirements of law and the regulations of this Bureau, is hereby accepted.

For the Director  
*Mary J. M. Hurd*  
 Chief Cadastral Surveyor of Oregon

November 16, 2012  
 Date