

FILED  
 Date: 11/29/2013 By: JC  
 This survey consists of:  
 Map: VOL. 58 PAGE  
 Numbers: 22945-22946  
 Corner Rpt.: THE PLAT REPRESENTS THE  
 ENTIRE RECORD OF THE  
 SURVEY  
 DOUGLAS COUNTY  
 SURVEYOR

TOWNSHIP 25 SOUTH, RANGE 1 WEST, OF THE WILLAMETTE MERIDIAN, OREGON

SHEET 1 OF 2

RETRACEMENT

This plat constitutes the entire record of the retracement of a portion of the north boundary, subdivision lines, and subdivision of section lines of section 6, Township 25 South, Range 1 West, Willamette Meridian, Oregon.

The directions of the lines are based on the true meridian as determined by a combination of Global Positioning System (GPS) techniques and direct solar observation, carried forward by sustained angulation using conventional survey techniques. All measurements along the lines were derived through the use of GPS and conventional survey techniques. Measured distances and directions have been adjusted by computer software that incorporates a least squares adjustment routine. The adjusted mean bearings and mean horizontal ground elevation distances are reported to the nearest second and 0.01 foot.

The lines of the official original surveys and resurveys were retraced and search was made for all corners, lines, other calls of the record, and, where available, collateral evidence of local surveys and corners. Identified corners were perpetuated in their original positions. The retracement data were thoroughly verified and only the true line field data are given hereon.

Each new bearing tree has a 2 1/2 inch x 1/4 inch magnetic nail (Mag Nail) driven at the base on right side center, unless otherwise noted in the corner description.

Only those lines bounding Federal interest land were blazed.

The geographic positions shown hereon were determined by ties from temporary GPS control points, utilizing dual frequency, carrier phase GPS receivers, and processed using the National Geodetic Survey's Online Positioning User Service (OPUS).

The survey was executed in accordance with the specification set forth in the Manual of Surveying Instructions (2009), and the special instructions approved April 26, 2010, for Group No. 2300, Administrative File No. 1106, Oregon, by Kenneth W. Saveland, Cadastral Surveyor, beginning September 25, 2011, and completed November 17, 2011. He was assisted by Robert NMI, Durring and Thomas A. Holloman, Surveying Technicians.

The history of official surveys pertaining to this retracement is as follows:

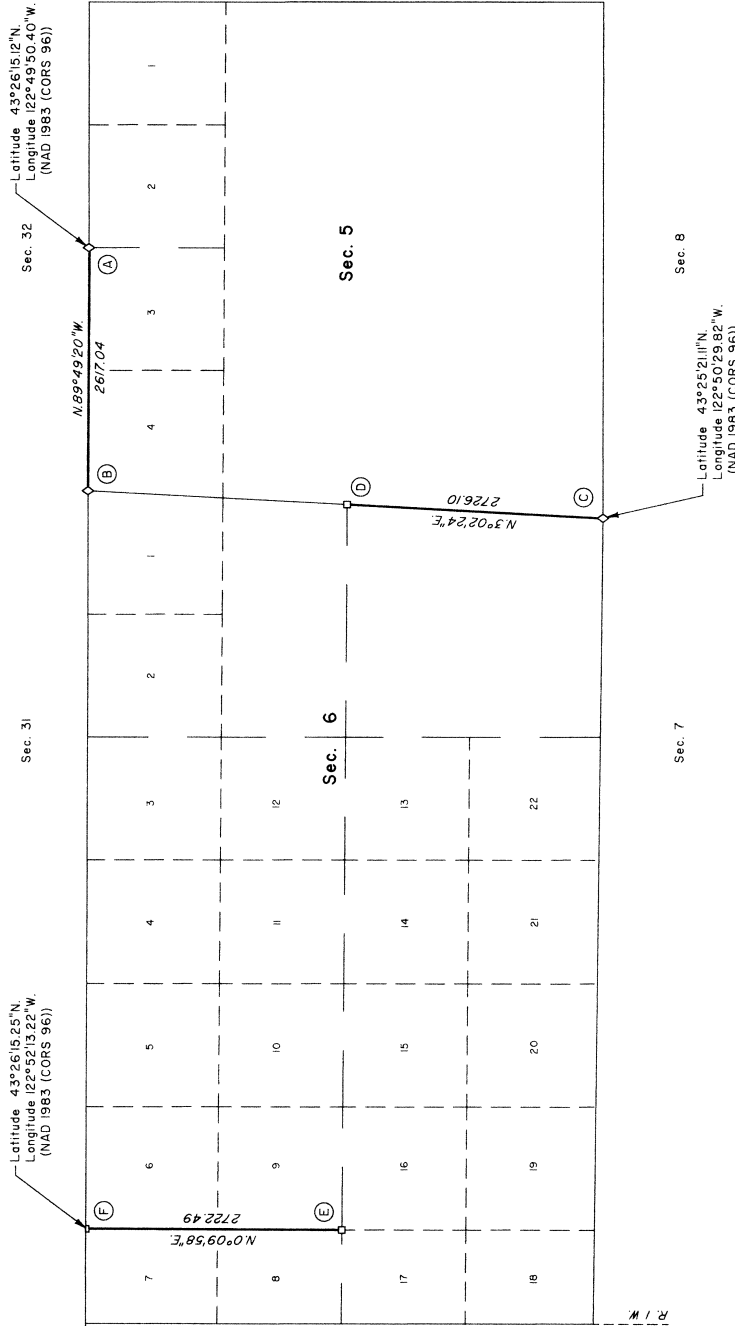
In 1896, Carl S. Nicklin, U.S. Deputy Surveyor, surveyed the south boundary of T. 24 S., R. 1 W., as shown on the official plat of survey approved August 10, 1897.

In 1900, Hezekiah H. Johnson, U.S. Deputy Surveyor, surveyed the subdivision lines, as shown on the official plat of survey approved May 6, 1901.

In 1981, James E. Jolley, Cadastral Surveyor, resurveyed a portion of the north boundary and subdivision lines, and subdivided section 6, as shown on the official plat of survey accepted June 29, 1984.

The following local surveys filed in the Douglas County Surveyor's Office are referred to in subsequent corner description and are referenced by surveyor's last name, official title or Professional Land Surveyor (PLS) No., and year.

Date	Name and Registration Number	File Number
1960	Douglas County Surveyor's Office	CS 52/30
1960	James W. Byron, Dep. Co. Surveyor	CS 52/30
1966	Douglas County Surveyor's Office	CS 52/30
1978	Douglas County Surveyor's Office	CS 60/11



LEGEND

- ◊ Original corner previously remonumented
- Corner previously established or reestablished

UNITED STATES DEPARTMENT OF THE INTERIOR  
 BUREAU OF LAND MANAGEMENT

Portland, Oregon

The survey represented by this plat, having been correctly executed in accordance with the requirements of law and the regulations of this Bureau, is hereby accepted.

For the Director  
*Mary J. M. Naitl*  
 Chief Cadastral Surveyor of Oregon

October 25, 2012  
 Date

I, Kenneth W. Saveland, Cadastral Surveyor, HEREBY CERTIFY upon honor, that in pursuance of special instructions bearing the approval date of the 28th day of April, 2010, and of a permit to practice bearing the date of the 28th day of July, 2011, I have retraced a portion of the north boundary, subdivision lines, and subdivision of section lines of section 6, Township 25 South, Range 1 West, Willamette Meridian, Oregon, which is represented upon this plat as having been surveyed by me and my directions, and that said survey has been made in strict conformity with said special instructions, the Manual of Surveying Instructions, and in the specific manner described on this plat.

*Kenneth W. Saveland*  
 Cadastral Surveyor  
 October 15, 2012  
 Date

