

ORIGINAL

SHEET 1 OF 2

TOWNSHIP 21 SOUTH, RANGE 7 WEST, OF THE WILLAMETTE MERIDIAN, OREGON
DEPENDENT RESURVEY AND SUBDIVISION OF SECTION 16

FILED
Date: 11/29/2013 By: JC
This survey consists of:
Map: VOL 58 PAGE
Narrative: 22943-27944
Corner Rpt. SURVEY RECORD OF THE
DOUGLAS COUNTY
SURVEYOR

This plat constitutes the entire record of the dependent resurvey of a portion of the subdivision lines, designed to restore the corners in their true original location according to the best available evidence, and the subdivision of section 16, Township 21 South, Range 7 West, Willamette Meridian, Oregon.

The history of official surveys pertaining to this survey is on Sheet 2 of 2.

The directions of the lines are based on the true meridian as determined by Global Positioning System (GPS) techniques and direct solar observation, carried forward by sustained angulation using conventional survey techniques. All measurements along the lines were derived through the use of GPS and conventional survey techniques. Measured distances and directions have been adjusted by computer software that incorporates a least squares adjustment routine. The adjusted mean bearings and mean horizontal ground elevation distances are reported to the nearest second and 0.01 foot.

The lottings and areas are as shown on the plat approved February 25, 1985.

Preliminary to the resurvey, the lines of the official original surveys were retraced and a search was made for all corners, lines, other calls of record, and, where available, collateral evidence of local surveys and corners. Identified corners were reestablished in their original positions; lost corners were reestablished and monumented at proportionate positions based on the official record.

The retracement data was thoroughly verified and only the true line field data are given hereon.

Each new bearing tree has a 1/2 inch x 1/4 inch magnetic nail (Mag Nail) driven at the base on right side center, unless otherwise noted in the corner description.

Only those lines bounding Federal interest land were blazed.

The geographic positions shown hereon were determined by ties from temporary GPS control points, utilizing dual frequency, carrier phase GPS receivers, and processed using the National Geodetic Survey's Online Positioning User Service (OPUS).

The survey was executed in accordance with the specification set forth in the Manual of Surveying Instructions (2009), and the special instructions approved August 24, 2011, for Group No. 2619, Oregon, by Kenneth W. Saveland, Cadastral Surveyor, beginning March 21, 2012, and completed May 1, 2012. He was assisted by Robert NM Durning, Thomas A. Holloman, and Marc A. Montpas, Surveying Technicians.

UNITED STATES DEPARTMENT OF THE INTERIOR
BUREAU OF LAND MANAGEMENT

Portland, Oregon

The survey represented by this plat, having been correctly executed in accordance with the requirements of law and the regulations of this Bureau, is hereby accepted.

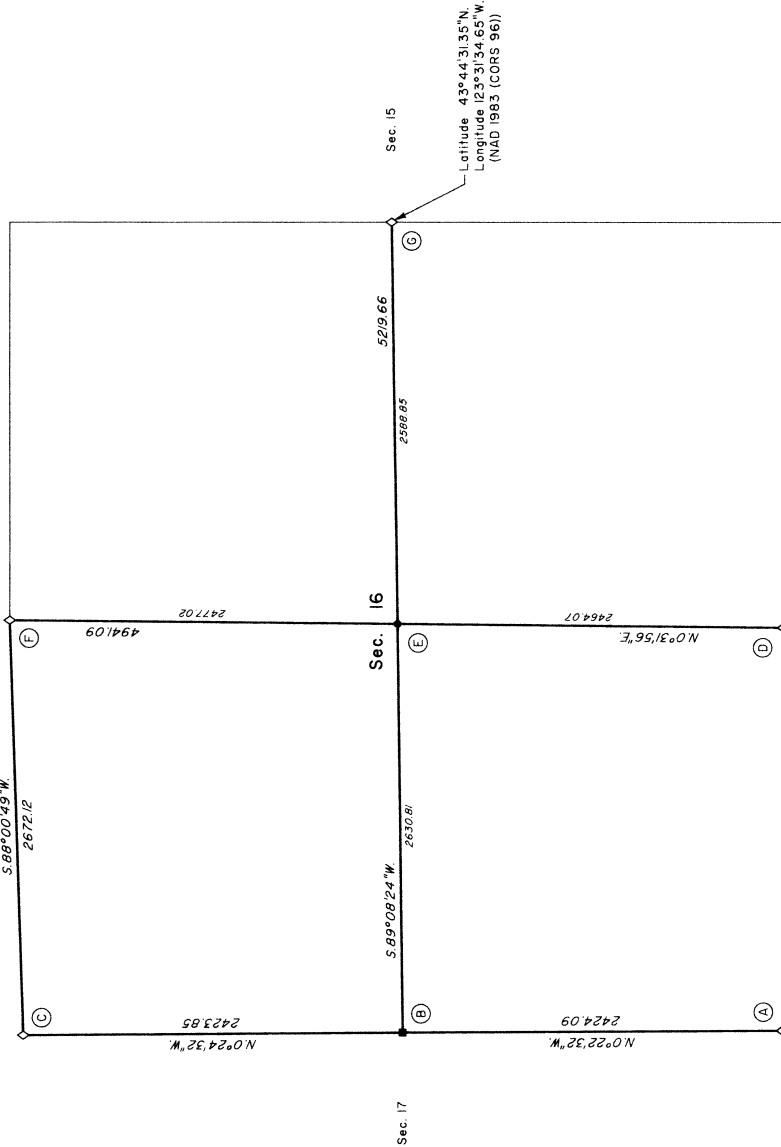
For the Director

Mary J. M. Hart

Chief Cadastral Surveyor of Oregon

October 25, 2012

Date



LEGEND
◇ Original corner previously remonumented
■ Corner previously reestablished;
remonumented this survey
● Corner established this survey

I, Kenneth W. Saveland, Cadastral Surveyor, HEREBY CERTIFY upon honor, that in pursuance of special instructions bearing the approval date of the 24th day of August, 2011, and the assignment instructions bearing the date of the 24th day of August, 2011, I have dependently resurveyed a portion of the subdivision lines and subdivided section 16, Township 21 South, Range 7 West, Willamette Meridian, Oregon, which is represented upon this plat as having been executed by me and under my direction, and that said survey has been made in strict conformity with said special instructions, the Manual of Surveying Instructions, and in the specific manner described on this plat.

Kenneth W. Saveland
Cadastral Surveyor

October 15, 2012
Date



Scale in Feet