

TOWNSHIP 28 SOUTH, RANGE 2 WEST, OF THE WILLAMETTE MERIDIAN, OREGON

RETRACEMENT

This plat constitutes the entire record of the retracement of a portion of the subdivision lines, Township 28 South, Range 2 West, Willamette Meridian, Oregon.

The history of official surveys pertaining to this retracement is as follows:

In 1910, William N. Gibb, U.S. Deputy Surveyor, surveyed a portion of the west boundary and subdivision lines, as shown on the official plat of survey approved October 17, 1911. In 1910, William N. Gibb, U.S. Deputy Surveyor, surveyed a portion of the east boundary of T. 28 S., R. 2 W., as shown on the official plat of survey approved October 17, 1911. The following local surveys filed in the Douglas County Surveyor's Office are referred to in subsequent corner descriptions and are referenced by the surveyor's last name, official title or Professional Land Surveyor (PLS) No., and year.

Table with 3 columns: Date, Name, Registration Number, Title, File Number. Includes entries for James W. Byron, Deputy Co. Surveyor, CS 52/26, Bruce A. Shaner, PLS 4906, CS 54/26-13, CS 55/74C.

The directions of the lines are based on the true meridian as determined by direct solar observation and carried forward by detouring angulation using conventional survey techniques. All measurements along the lines were derived through the use of GPS and conventional survey techniques. Measured distances and directions have been adjusted by computer software that incorporates a least squares adjustment routine. The adjusted mean bearings and mean horizontal ground elevation distances are reported to the nearest second and 0.01 foot.

The lines of the official resurvey were retraced and search was made for all corners, lines, other calls of the record, and where available, collateral evidence of local surveys and corners. Identified corners were perpetuated in their original positions. The retracement data were thoroughly verified and only the true line field data are given hereon.

Each new bearing here has a 2 1/2 inch x 1/4 inch magnetic nail (Mag Nail) driven at the base on right side center, unless otherwise noted in the corner description. Only those lines bounding Federal interest land were blazed.

The geographic positions shown hereon were determined by ties from temporary GPS control points, utilizing dual frequency, carrier phase GPS receivers and processed using the National Spatial Reference System (NSRS) for Oregon. The National Spatial Reference System (NSRS) is the official reference system (ORS) for DOUGLAS COUNTY COORS. The National Spatial Reference System (NSRS) is the official reference system (ORS) for DOUGLAS COUNTY COORS. The National Spatial Reference System (NSRS) is the official reference system (ORS) for DOUGLAS COUNTY COORS.

The survey was executed in accordance with the specification set forth in the Manual of Surveying Instructions (2009), and the special instructions approved April 28, 2010, for Group No. 2500, Administrative File No. 110, Oregon, by Kenneth W. Saveland, Cadastral Surveyor, beginning August 10, 2011, and completed August 31, 2011. He was assisted by Nathan C. Erickson, Cadastral Surveyor, and Robert NMI Dunning and Thomas A. Hollaman, Surveying Technicians.

UNITED STATES DEPARTMENT OF THE INTERIOR BUREAU OF LAND MANAGEMENT

Portland, Oregon

The survey represented by this plat, having been correctly executed in accordance with the requirements of law and the regulations of this Bureau, is hereby accepted.

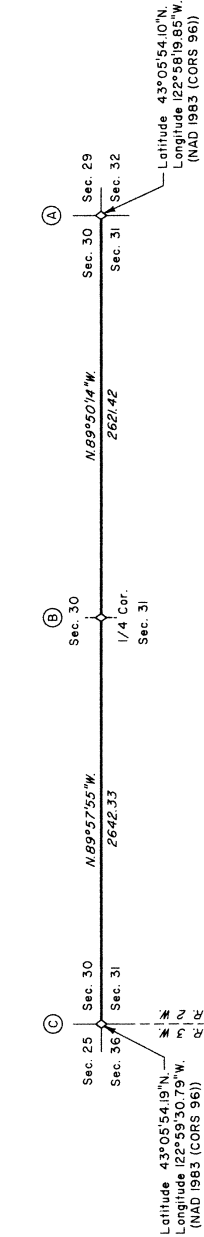
For the Director

Mary J. M. [Signature]

Chief Cadastral Surveyor of Oregon

September 7, 2012

Date



Latitude 43° 05' 54.10\"/>

Longitude 122° 58' 19.85\"/>

from which the remaining original bearing trees

A fir, 30 ins. diam., bears N. 13 1/2° E., 20.5 ft. dist., with a healed blaze.

A fir, 14 ins. diam., bears S. 15° W., 33.7 ft. dist., with a healed blaze. (Record 350 ft. dist.)

A fir, 33 ins. diam., bears N. 60° W., 40.9 ft. dist., with a healed blaze. (Record, 27.7 ft. dist.)

A decayed fir stump, 7 ins. diam., bears S. 60 1/2° E., 11.2 ft. dist., with no marks visible.

and a new bearing tree

A fir, 10 ins. diam., bears S. 33° E., 39.9 ft. dist., mkd. T28S R2W S31 BT.

Corner is located 155 ft. W. of a shallow draw, drains generally NW.

The 1/4 sec. cor. of secs. 30, 31, and 32, perpetuated by Shaner, PLS 4906, in 1968, monumented with an iron post, 1 1/4 ins. diam., firmly set, projecting 10 ins. above a collar of stone, (alongside of which is the original unmarked basalt stone, 8 x 12 ins. (Record, 8 x 8 x 12 ins.)), with brass cap mkd.

from which the remains of an original bearing tree

A fir, 10 ins. diam., bears S. 6° E., 11.2 ft. dist., with scribe marks S31 BT, visible on a partially healed blaze.

and the remains of a bearing tree mkd. by Shaner.

A decayed pine snag, 27 ins. diam., bears N. 89 3/4° W., 110 ft. dist., with scribe marks 1/4 S30 T28S R2W visible on an open blaze.

and a new bearing tree

A fir, 13 ins. diam., bears N. 64° E., 13.5 ft. dist., mkd. 1/4 S30 BT.

Incorporate original stone in collar.

Corner is located 120 ft. W. of a gravel road, 12 ft. wide, bears N. 10° W. and S. 20° E., in a curve.

The cor. of secs. 29, 30, 31, and 32, perpetuated by the Douglas County Surveyor's Office in 1968, monumented with an iron post, 1 1/4 ins. diam., firmly set, projecting 4 ins. above a collar of stone, with brass cap mkd.

from which the remains of original bearing trees

A decayed fir stump, size indeterminate, bears N. 63° E., 99.0 ft. dist., with no marks visible on a decayed blaze.

A decayed fir stump, size indeterminate, bears S. 69° E., 51.5 ft. dist., with scribe marks T28S R2W S32 BT visible on a partially healed blaze.

A pine, 36 ins. diam., bears S. 34° W., 73.3 ft. dist., with a healed blaze.

and bearing trees mkd. by the Douglas County Surveyor's Office

A fir, 17 ins. diam., bears N. 74° E., 22.5 ft. dist., with a healed double blaze.

A hemlock, 13 ins. diam., bears S. 22 1/2° E., 10.9 ft. dist., with a healed double blaze.

A fir, 15 ins. diam., bears S. 24 1/2° W., 15.2 ft. dist., with a healed double blaze.

A fir, 15 ins. diam., bears N. 25 1/4° W., 16.9 ft. dist., with a healed double blaze.

LEGEND Original corner previously monumented

August 24, 2012 Date

[Signature] Cadastral Surveyor

