

TOWNSHIP 25 SOUTH, RANGE 2 WEST, OF THE WILLAMETTE MERIDIAN, OREGON

SHEET 1 OF 2

DEPENDENT RESURVEY

FILED Date: 10/29/2012 By: JC This survey consists of: Map: VOL. 58 PAGE: 22940-22941

Corner Pt.: 22940-22941 DOUGLAS COUNTY SURVEYOR

This plat constitutes the entire record of the dependent resurvey of a portion of the subdivisional lines, Township 25 South, Range 2 West, Willamette Meridian, Oregon, designed to restore the corners to their true original locations according to the best available evidence.

The direction of the lines are based on the true meridian as determined by a combination of Global Positioning System (GPS) techniques and direct solar observation, carried forward by sustained angulation using conventional survey techniques. All measurements along the lines were derived through the use of GPS and conventional survey techniques. Measured distances and directions have been adjusted by computer software that incorporates a mean bearing and mean horizontal ground reduction distances are reported to the nearest second and 0.01 foot.

Preliminary to the resurvey the lines of the official original surveys and resurveys were retraced and search was made for all corners, lines, other calls of the record, and, where available, collateral evidence of local surveys and corners. Identified corners were perpetuated in their original positions. The resurvey data were thoroughly verified and only the true line field data are given herein.

Each new bearing tree has a 2 1/2 x 1/4 in. magnetic nail (Mog Nail) driven at the base on right side center, unless otherwise noted in the corner description.

Only those lines bounding Federal interest land were blazed.

The geographic positions shown herein were determined by a tie from a temporary GPS control point, utilizing dual frequency, carrier phase GPS receivers, and processed using the National Geodetic Survey's Online Positioning User Service (OPUS).

The survey was executed in accordance with the specification set forth in the Manual of Surveying Instructions (2009), and the special instructions approved September 9, 2010, and supplemental special instructions approved March 24, 2011, for Group No. 2348, Oregon, by Kenneth W. Saveland, Cadastral Surveyor, beginning March 23, 2011 and completed June 2, 2011. He was assisted by Robert NMI Durning and Thomas A. Holaman, Surveying Technicians.

UNITED STATES DEPARTMENT OF THE INTERIOR BUREAU OF LAND MANAGEMENT

Portland, Oregon

The survey represented by this plat, having been correctly executed in accordance with the requirements of law and the regulations of this Bureau, is hereby accepted.

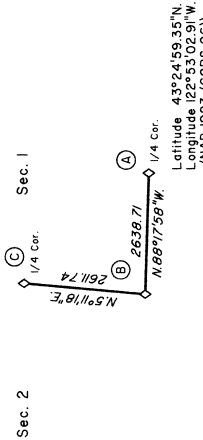
For the Director

Mary J. M. Hatch

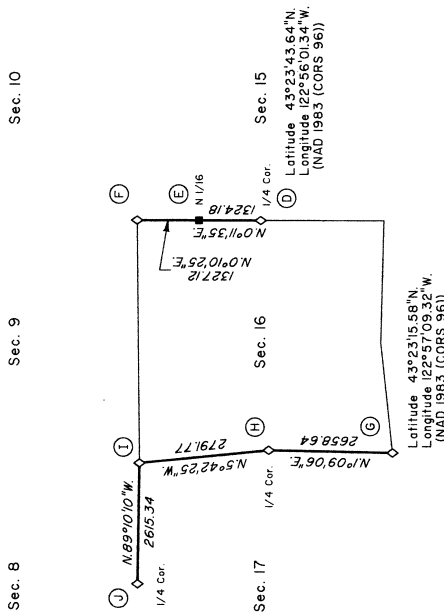
Chief Cadastral Surveyor of Oregon

September 7, 2012

Date



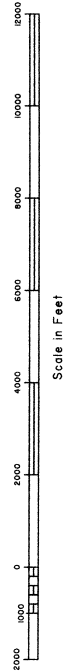
Sec. 10 Sec. 15 Sec. 16 Sec. 17 Sec. 20 Sec. 21



I, Kenneth W. Saveland, Cadastral Surveyor, HEREBY CERTIFY upon honor, that in pursuance of special instructions bearing the approval date of 9th day of September, 2010, supplemental special instructions bearing the approval date of the 24th day of March, 2011, assignment instructions bearing the date of the 17th day of March, 2011, and supplemental resurvey instructions bearing the date of the 24th day of March, 2011, I have dependently resurveyed portions of the subdivisional lines, Township 25 South, Range 2 West, Willamette Meridian, Oregon, which is represented upon this plat as having been executed by me and under my direction; and that said survey has been made in strict conformity with said special instructions, the Manual of Surveying Instructions, and in the specific manner described on this plat.

Kenneth W. Saveland August 29, 2012 Date Cadastral Surveyor

Table with columns: Date, Name, Title/Registration Number, File Number. Rows include Ben B. Irving, Glen McChesney, V. R. Tracy, Douglas County Surveyor's Office, Douglas County Surveyor's Office, Randall W. Smith, Deputy County Surveyor, David A. Edwards, PLS 2339, David A. Edwards, PLS 2339.



TOWNSHIP 25 SOUTH, RANGE 2 WEST, OF THE WILLAMETTE MERIDIAN, OREGON

SHEET 2 OF 2

DEPENDENT RESURVEY

(A) The 1/4 sec. cor. of secs. 1 and 12, monumented with an iron post, 1 in. diam., firmly set, projecting 11 ins. above ground, with brass cap mkd.

S 1 1/4 S 12 1951

from which the remains of the original bearing trees

A madrone snag, 14 ins. diam., bears S. 16 1/4° W., 13.2 ft. dist., with no marks visible on an open decayed blaze.

A fir, 62 ins. diam., bears N. 71 1/2° W., 41.6 ft. dist., with a healed blaze.

and a bearing tree mkd. by Tollett and White

A fir, 45 ins. diam., bears S. 54 1/2° W., 88.4 ft. dist., with a healed blaze.

(B) The cor. of secs. 1, 2, 11, and 12, perpetuated by the Douglas County Surveyor's Office in 1976, monumented with an iron post, 2 ins. diam., firmly set, projecting 16 ins. above ground, (alongside of which is the original stone, 6 X 8 ins., firmly set, projecting 12 ins. above ground, with 5 notches on N. edge and 1 notch on W. edge) with a brass cap oriented NE., mkd.

T 25 S R 2 W S 2 S 1 S 11 S 12 1951

from which the remains of the original bearing trees

A sawed fir stump, 48 ins. diam., bears N. 54 1/2° E., 7.3 ft. dist., with a healed blaze.

A cedar, 36 ins. diam., bears S. 6° E., 33.0 ft. dist., with a healed blaze.

A fir, 49 ins. diam., bears N. 13 3/4° W., 9.2 ft. dist., with a healed blaze.

and a bearing tree mkd. by the Douglas County Surveyor's Office

A fir, 28 ins. diam., bears S. 22° W., 46.6 ft. dist., with a healed blaze.

Add a collar of stone around iron post and incorporate original stone into collar.

(C) The 1/4 sec. cor. of secs. 1 and 2, monumented with an iron post, 1 in. diam., firmly set, projecting 12 ins. above ground, with brass cap mkd.

1/4 S 2 S 1 1951

from which the remains of the original bearing trees

A fir, 26 ins. diam., bears N. 30° E., 24.4 ft. dist., with a healed blaze.

A fir snag, 53 ins. diam., bears N. 74° W., 14.5 ft. dist., with a healed blaze.

and a new bearing tree

A cedar, 7 ins. diam., bears N. 81 1/4° W., 38.2 ft. dist., mkd. 1/4 S2 BT.

(D) The 1/4 sec. cor. of secs. 15 and 16, monumented with an iron post, 1 1/2 ins. diam., firmly set, top buried 27 ins. below ground level, with brass cap mkd.

T 25 S R 2 W S 9 S 10 S 16 S 15 1973

from which the bearing trees mkd. by Irving, Douglas County Surveyor, in 1948

A maple, 13 ins. diam., bears N. 46 1/2° E., 45.5 ft. dist., with a double healed blaze. (Record, 40.5 ft. dist.)

A maple, 27 ins. diam., bears S. 84 1/4° W., 51.9 ft. dist., with a healed blaze.

and bearing trees mkd. by Tracy, Douglas County Surveyor's Office, in 1966

A maple with a broken top, 27 ins. diam., bears N. 28° E., 31.2 ft. dist., with a healed blaze.

A cedar, 36 ins. diam., bears S. 27 3/4° W., 109.0 ft. dist., with a healed blaze.

and a new accessory

A rebar, 30 ins. long, 5/8 ins. diam., driven 29 ins. in the ground for a reference monument, bears N. 69° 42' 00" W., 37.90 ft. dist., with an aluminum cap mkd. RM T25S R2W 37.9 FT TO COR 1/4 S16 2011 and an arrow pointing to the cor.

A rebar, 5/8 ins. diam., projecting 4 ft. above ground, placed by Smith, Deputy County Surveyor, in 1995, is alongside the cor.

Corner is located 310 ft. S. of Rock Creek Road, asphalt surfaced, 20 ft. wide, bears N. 40° E. and S. 40° W.

(E) The N 1/16 sec. cor. of secs. 15 and 16, established by Irving, Douglas County Surveyor, in 1948, and is accepted as the cor.; monumented with an iron pipe, 1 in. diam., firmly set, top 4 ins. below ground surface.

N 1/16 S 16 S 15 2011

At the corner point

Set a stainless steel post, 29 ins. long, 2 1/2 ins. diam., 26 ins. in the ground, with brass cap mkd.

from which

A fir, 18 ins. diam., bears N. 24 1/4° E., 21.0 ft. dist., mkd. N 1/16 S15 BT.

A fir, 15 ins. diam., bears N. 73° W., 14.5 ft. dist., mkd. N 1/16 S15 BT.

Place iron pipe inside and deposit a magnet in a white plastic case at the base of the stainless steel post.

(F) The cor. of secs. 9, 10, 15, and 16, monumented with an iron post, 2 1/2 ins. diam., firmly set, top flush with ground surface, with brass cap mkd.

T 25 S R 2 W S 9 S 10 S 16 S 15 1962

from which the remains of the original bearing trees

A fir, 57 ins. diam., bears N. 37° E., 13.2 ft. dist., with a healed blaze.

A broken fir stump, size indeterminate, bears S. 26° E., 46.9 ft. dist., with no marks visible.

A root-hole bears N. 40° W., 26.4 ft. dist., uphill of which is a fallen, decayed fir, size indeterminate, with no marks visible.

and the remains of bearing trees mkd. by Irving, County Surveyor, in 1948

A fir, 47 ins. diam., bears S. 32 1/2° E., 43.6 ft. dist., with scribe marks T25S R2W S15 CS visible on bark blaze. (Record, 46.2 ft. dist.)

A sawed fir stump, 36 ins. diam., bears S. 9° W., 40.3 ft. dist., with a healed blaze.

and a bearing tree mkd. by Brooks

A fir, 25 ins. diam., bears S. 36° W., 36.3 ft. dist., with a healed blaze.

and a new bearing tree

A cedar, 18 ins. diam., bears N. 40 3/4° W., 50.6 ft. dist., mkd. T25S R2W S9 BT.

(G) The cor. of secs. 16, 17, 20, and 21, monumented with an iron post, 2 1/2 ins. diam., firmly set, flush with the top of a collar of stone, with a brass cap mkd.

T 25 S R 2 W S 17 S 16 1962

from which the remaining original bearing tree

A fir, 38 ins. diam., bears N. 48° W., 31.7 ft. dist., with a healed blaze.

and the remains of bearing trees mkd. by Brooks

A chinquapin, 15 ins. diam., bears N. 17 1/4° E., 11.2 ft. dist., with a healed blaze.

A decayed hemlock snag, 15 ins. diam., bears S. 74 1/2° E., 39.3 ft. dist., with a healed blaze.

A cedar, 23 ins. diam., bears S. 87° W., 35.6 ft. dist., with a healed blaze.

and a bearing tree mkd. by Sheestick in 2001-02

A hemlock, 17 ins. diam., bears S. 29° E., 9.8 ft. dist., with scribe marks T25S R2W S21 BT visible on partially healed blaze.

Corner is located 70 ft. E. of a creek, 3 ft. wide, course S. 5° E.

(H) The 1/4 sec. cor. of secs. 16 and 17, perpetuated by Edwards, PLS No. 2339, in 2009, monumented with an iron post, 2 1/2 ins. diam., firmly set, projecting 2 ins. above the top of a collar of stone, with brass cap mkd.

1/4 S 17 S 16 T 25 S R 2 W 1962

from which the remains of the original bearing trees

A sawed, decayed, fir stump, size indeterminate, bears S. 45° E., 16.5 ft. dist., with scribe marks S1 visible on wood fragment of opened blaze.

A decayed fir snag, size indeterminate, bears S. 44 1/2° W., 32.3 ft. dist., with scribe marks 1/4 17 visible on open blaze.

and the remains of a bearing tree mkd. by Brooks

A sawed, decayed, maple stump, 12 ins. diam., bears S. 30° W., 52.1 ft. dist., with no marks visible on decayed partially healed blaze.

and bearing trees mkd. by Edwards

A fir, 20 ins. diam., bears N. 78 3/4° E., 53.3 ft. dist., with scribe marks 1/4 S16 BT visible on partially healed blaze.

A fir, 17 ins. diam., bears S. 23° W., 10.9 ft. dist., with scribe marks 1/4 S17 BT visible on partially healed blaze.

(I) The cor. of secs. 8, 9, 16, and 17, perpetuated by Edwards, PLS 2339, in 2009, monumented with an iron post, 2 1/2 ins. diam., firmly set, projecting 2 ins. above the top of a mound of stone, 3 ft. diam., 1 ft. high, with brass cap mkd.

T 25 S R 2 W S 8 S 9 S 17 S 16 1962

from which the remains of the original bearing trees

A fir, 39 ins. diam., bears N. 37° E., 35.0 ft. dist., with a healed blaze.

A root-hole bears S. 2° E., 5.9 ft. dist., downhill of which is a fallen, decayed, hemlock snag, 9 ins. diam., with scribe marks 25S R2W S visible on a partially healed blaze.

and the remains of bearing trees mkd. McCloskey, Weyerhaeuser Timber Company Land Agent, in 1959

A fir, 17 ins. diam., bears N. 22 3/4° E., 54.7 ft. dist., with a healed double blaze.

A saved, decayed, fir stump, 36 ins. diam., bears S. 50° W., 49.5 ft. dist., with no marks visible on an opened decayed blaze.

and the remains of a bearing tree and a bearing object mkd by Brooks

A fir, 43 ins. diam., bears S. 14 1/2° E., 27.1 ft. dist., with a healed blaze.

An X BO chiseled into the E. face of a rock outcropping bears S. 57 3/4° W., 9.2 ft. dist.

and a bearing tree mkd. by Edwards

A cedar, 8 ins. diam., bears N. 48° W., 32.0 ft. dist., with scribe marks T25S R2W S8 BT visible on partially healed blaze.

A search was made for all original line trees bet. secs. 8 and 17 and none were recovered.

(J) The 1/4 sec. cor. of secs. 8 and 17, monumented with an iron post, 2 1/2 ins. diam., firmly set, projecting 8 ins. above ground, (alongside of which is an iron pipe, 2 ins. diam., firmly set, projecting 15 ins. above ground), with brass cap mkd.

1/4 S 8 S 17 T 25 S R 2 W 1962

from which the remains of an original bearing tree

A decayed hemlock stump, size indeterminate, bears S. 6° W., 13.2 ft. dist., no marks visible and a spike driven in the base, oriented towards the cor., with a W stamped in the head.

and the remains of a bearing tree mkd. by Brooks

A decayed hemlock stump, size indeterminate, bears N. 2° W., 25.1 ft. dist., with scribe marks 1/4 S8 visible on partially healed blaze.

and bearing trees mkd. by Christensen, PLS No. 2603, in 1999

A fir, 8 ins. diam., bears N. 34 1/4° E., 11.6 ft. dist., with a healed double blaze.

A fir, 11 ins. diam., bears S. 60 1/2° E., 35.9 ft. dist., with a healed double blaze.

A fir, 9 ins. diam., bears S. 70 1/4° W., 31.1 ft. dist., with a healed double blaze.

A fir, 11 ins. diam., bears N. 86 3/4° W., 27.9 ft. dist., with a healed double blaze.

A search was made for all original line trees bet. secs. 8 and 17 and none were recovered.

FILED Date: 10/20/2019 By: JC This survey consists of: Map: VOL. 58 PAGE Nemative: 23940-23941 Corner Rpt.: 23940-23941 DOUGLAS COUNTY SURVEYOR

UNITED STATES DEPARTMENT OF THE INTERIOR BUREAU OF LAND MANAGEMENT

Portland, Oregon

The survey represented by this plot, having been correctly executed in accordance with the requirements of law and the regulations of this Bureau, is hereby accepted.

For the Director

Mary J. M. Hated Chief Cadastral Surveyor of Oregon

September 7, 2012 Date