

TOWNSHIP 27 SOUTH, RANGE 3 WEST, OF THE WILLAMETTE MERIDIAN, OREGON

SHEET 1 OF 2

RETRACEMENT

FILED
 Date: 9/18/2012 By: JC
 This survey consists of:
 Map, PLAT 2012-1
 Narrative, VOL 58 PGS 22911-2
 General Map - THIS PLAT REPRESENTS THE
 INTERESTS OF THE
 DOUGLAS COUNTY
 SURVEYOR

This plat constitutes the entire record of the retracement of a portion of the subdivision of section lines of section 1, Township 27 South, Range 3 West, Willamette Meridian, Oregon.

The history of the official surveys pertaining to this retracement is on Sheet 2 of 2.

The directions of the lines are based on the true meridian as determined by a combination of Global Positioning System (GPS) techniques and direct solar observation, carried forward by sustained angulation using conventional survey techniques. All measurements along the lines were derived through the use of GPS and conventional survey techniques. Measured distances and directions have been adjusted by computer software that incorporates a least squares adjustment routine. The adjusted mean bearings and mean horizontal ground elevation distances are reported to the nearest second and 0.01 foot.

Official areas based on the measurements of this survey have been returned for Federal interest land where indicated. Aliquot part legal subdivisions retain their aliquot characteristics and refer to precisely the same land as that which was previously identified by its original survey or description. A lot can only be subdivided by survey or supplemental plat. Except as indicated hereon, the lottings and areas are as shown on the plats approved March 26, 1872, and October 23, 1882, and plat accepted August 31, 1984.

The lines of the official original surveys and resurveys were retraced and search was made for all corners, lines, other calls of the record, and, where available, collateral evidence of local surveys and corners. Identified corners were perpetuated in their original positions. The retracement data were thoroughly verified and only the true line field data are given hereon.

Each new bearing tree has a 2 1/2 x 1/4 inch magnetic nail (Mag Nail) driven at the base on right side center, unless otherwise noted in the corner description.

Only those lines bounding Federal interest land were blazed. The geographic positions shown hereon were determined by ties from temporary GPS control points, utilizing dual frequency, carrier phase GPS receivers, and processed using the National Geodetic Survey's Online Positioning User Service (OPUS).

The survey was executed in accordance with the specification set forth in the Manual of Surveying Instructions (2009), and the special instructions approved April 28, 2010, for Group No. 2500, Administrative File No. 1104, Oregon, by Kenneth W. Saveland, Cadastral Surveyor, beginning August 24, 2011, and completed October 26, 2011. He was assisted by A. Bert Sheesick, Cadastral Surveyor, and Robert NMI Durning and Thomas A. Hollamon, Surveying Technicians.

UNITED STATES DEPARTMENT OF THE INTERIOR
 BUREAU OF LAND MANAGEMENT

Portland, Oregon

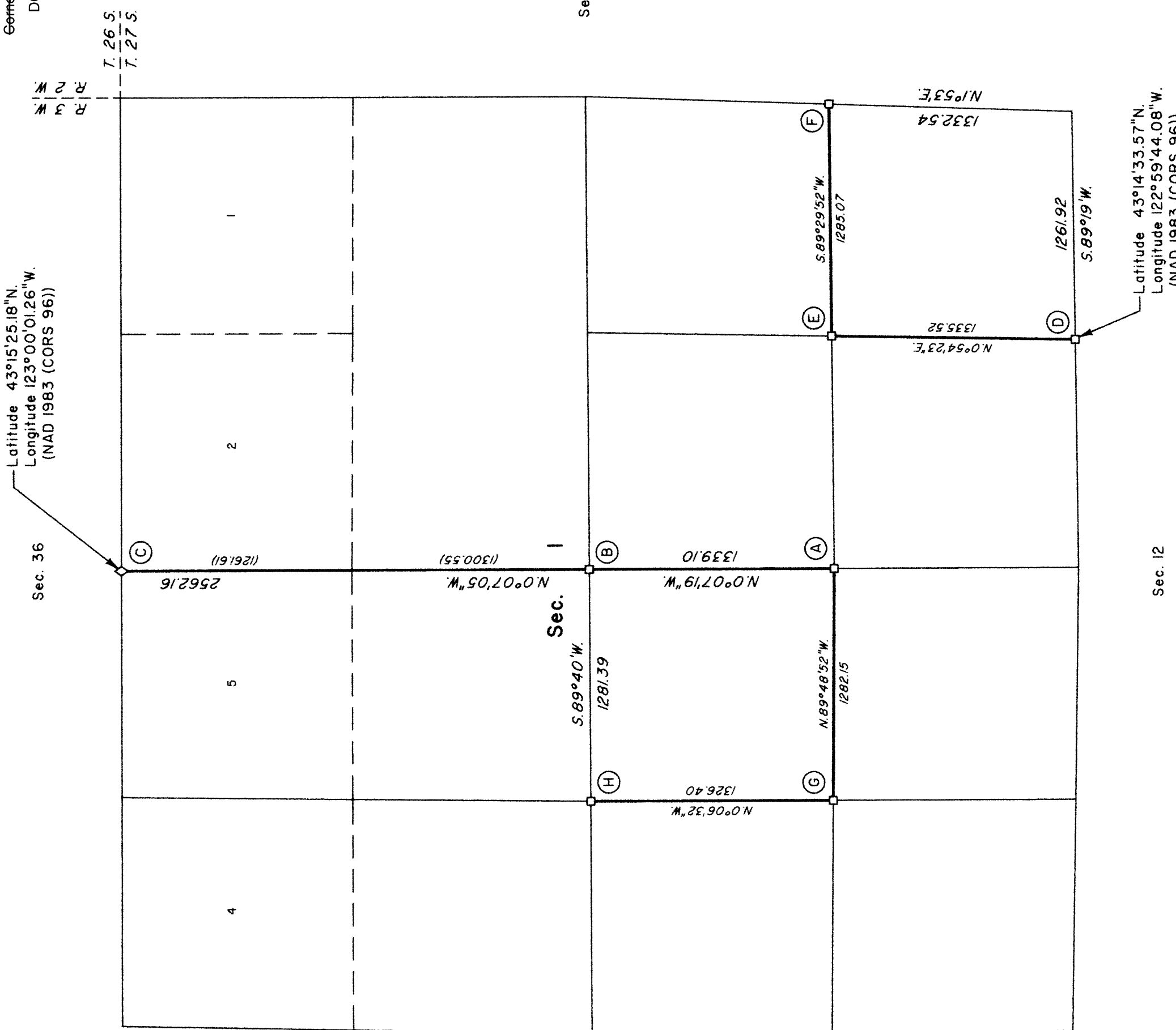
The survey represented by this plat, having been correctly executed in accordance with the requirements of law and the regulations of this Bureau, is hereby accepted.

For the Director

[Signature]

Chief Cadastral Surveyor of Oregon

July 27, 2012
 Date



I, Kenneth W. Saveland, Cadastral Surveyor, HEREBY CERTIFY upon honor, that in pursuance of special instructions bearing the approval date of the 28th day of April, 2010, and assignment instructions bearing the date of the 21st day of June, 2011, I have retraced a portion of the subdivision of section lines of section 1, Township 27 South, Range 3 West, Willamette Meridian, Oregon, which is represented upon this plat as having been executed by me and under my direction; and that said survey has been made in strict conformity with said special instructions, the Manual of Surveying Instructions, and in the specific manner described on this plat.

[Signature]
 Cadastral Surveyor

July 25, 2012
 Date

LEGEND
 ◊ Original corner previously remonumented
 □ Corner previously established or reestablished

Note:
 The lightweight lines with bearing and distance were surveyed by James E. Jelley and Wayne L. Rogers in 1982 under Group No. 1093.

