

ORIGINAL

TOWNSHIP 22 SOUTH, RANGE 6 WEST, OF THE WILLAMETTE MERIDIAN, OREGON

SHEET 1 OF 2

FILED Date: 3/21/2012 By: J.C. This survey consists of Map PLAT 2012-1 IN T22-6 Narrative: COPY IN VOL 57 Corner Rpt: PAGES 22808-9 DOUGLAS COUNTY SURVEYOR

RETRACEMENT

This plat constitutes the entire record of the retracement of a portion of the subdivisional lines, Township 22 South, Range 6 West, Willamette Meridian, Oregon.

The survey was executed in accordance with the specification set forth in the Manual of Surveying Instructions (2009), and the special instructions dated April 21, 2010, and approved April 28, 2010, for Group No. 2500, Administrative File No. 1004, Oregon.

The directions of the lines are based on the true meridian as determined by a combination of direct solar observation and Global Positioning System (GPS) measurements, carried forward by sustained angulation using conventional survey techniques. All measurements along the lines were derived through the use of electronic measuring equipment. Measured distances and directions have been adjusted by computer software that incorporates a least squares adjustment routine. The adjusted mean bearings and mean horizontal ground elevation distances are reported to the nearest second and 0.01 foot.

The lines of the official original surveys and resurveys were retraced and search was made for all corners, lines, other calls of the record, and, where available, collateral evidence of local surveys and corners. Identified corners were perpetuated in their original locations. The retracement data were thoroughly verified and only the true line field data are given herein.

Each new bearing tree has a 1/2 inch x 1/4 inch magnetic nail (Mag Nail) driven at the base on right side center, unless otherwise noted in the corner description.

Only those lines bounding or crossing federal interest land were blazed.

The geographic positions shown herein were determined by ties from temporary GPS control points, utilizing dual frequency, carrier phase GPS receivers, relative to the National Spatial Reference System.

Survey executed by Kenneth W. Saveland, Cadastral Surveyor, beginning July 13, 2010, and completed August 17, 2010. He was assisted by Robert (M) Dunning, Joel R. Herzberg, and Edmund J. Goulet, Surveying Technicians.

LEGEND
Original corner previously remonumented
Corner previously established or reestablished

UNITED STATES DEPARTMENT OF THE INTERIOR
BUREAU OF LAND MANAGEMENT

Portland, Oregon

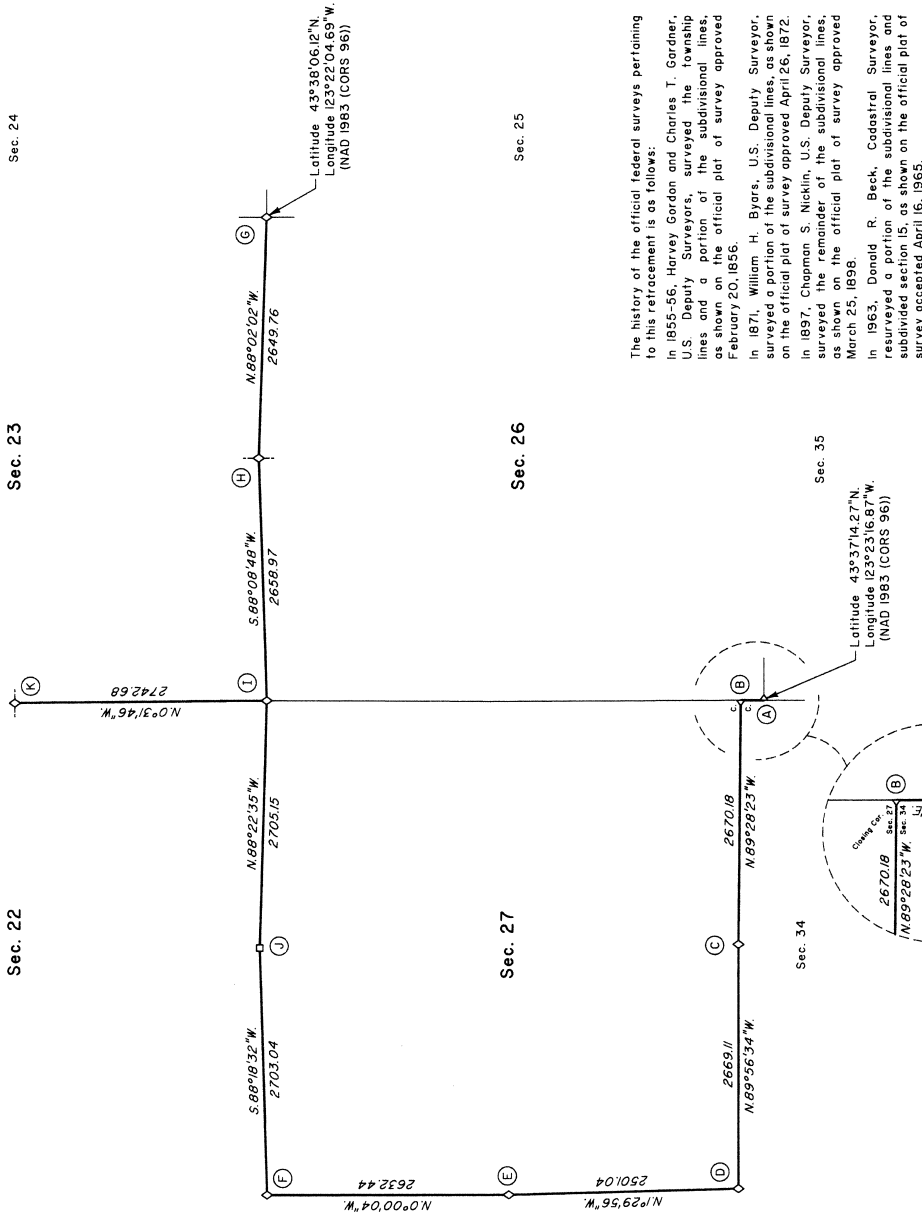
The survey represented by this plat, having been correctly executed in accordance with the requirements of law and the regulations of this Bureau, is hereby accepted.

For the Director

Signature of Director

Chief Cadastral Surveyor of Oregon

1/24/2012 Date

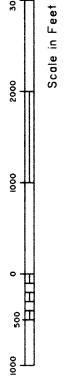


The history of the official federal surveys pertaining to this retracement is as follows:
In 1855-56, Harvey Gordon and Charles T. Gardner, U.S. Deputy Surveyors, surveyed the township lines and a portion of the subdivisional lines, as shown on the official plat of survey approved February 20, 1856.
In 1871, William H. Byars, U.S. Deputy Surveyor, surveyed a portion of the subdivisional lines, as shown on the official plat of survey approved April 26, 1872.
In 1897, Chapman S. Nicklin, U.S. Deputy Surveyor, surveyed the remainder of the subdivisional lines, as shown on the official plat of survey approved March 25, 1898.
In 1963, Donald R. Beck, Cadastral Surveyor, resurveyed a portion of the subdivisional lines and subdivided section 15, as shown on the official plat of survey accepted April 16, 1965.
In 1993, Dale T. Becehl, Cadastral Surveyor, resurveyed a portion of the subdivisional lines and subdivided section 23, as shown on the official plat of survey accepted October 3, 1993.
The following records filed in the Douglas County Surveyor's Office are referred to in subsequent corner descriptions and are referenced by the surveyor's last name, title or Professional Land Surveyor (PLS) No., and year.
Year Name Title/Reg. No. File No.
1958 Wilford N. Haines PLS 239 FB H-107
1961 Milo Godfrey Dep Co Surveyor CS 49/143
1975 William Elmstad PLS 377 M55-48
1992 Douglas Co Surveyor's Office CS 64/24

I, Kenneth W. Saveland, Cadastral Surveyor, HEREBY CERTIFY upon honor, that in pursuance of special instructions bearing the approval date of the 28th day of April, 2010, and the assignment instructions bearing the date of the 2nd day of June, 2010, I have retraced a portion of the subdivisional lines, Township 22 South, Range 6 West, Willamette Meridian, Oregon, which is represented upon this plat as having been executed by me and under my direction; and that said retracement has been made in strict conformity with said special instructions, the Manual of Surveying Instructions, and in the specific manner described on this plat.

Signature of Cadastral Surveyor

January 17, 2012 Date



Date: 3/21/2012 By: JC
This survey consists of
Map: PLAT 2012-1 IN T22-5
Narrative: COPY IN VOL. 57
Corner Rpt: PAGES 22808-9

DOUGLAS COUNTY
SURVEYOR

(A) The cor. of secs. 26 and 35 only, on the E. bdy of sec. 34, monumented with an iron post, 2 1/2 ins. diam., firmly set, projecting 8 ins. above ground, with a brass cap mkd.
T 22 S R 6 W
S 26
S 34 S 35
1963
from which the remains of the original bearing trees

A decayed fir stump, size indeterminate, bears N. 48° E., 3.5 ft. dist., with no marks visible.
A saved, decayed fir stump, 22 ins. diam., bears S. 35° E., 16.2 ft. dist., with fragmentary scribe marks visible on a chopped open blaze.
A saved, decayed fir stump, size indeterminate, bears N. 45° W., 13.2 ft. dist., with no marks visible.
and the remains of bearing trees mkd. by Haines, Oregon PLS No. 239, reported by Beck
A saved fir stump, 24 ins. diam., bears N. 55 1/2° E., 19.8 ft. dist., with a heated blaze.
A saved, decayed fir stump, size indeterminate, bears S. 9° E., 65.3 ft. dist., with a heated blaze.
and new bearing trees

A fir, 7 ins. diam., bears N. 43 3/4° E., 35.8 ft. dist., mkd. T22S R6W S26 BT.
A fir, 6 ins. diam., bears S. 56 1/2° E., 30.5 ft. dist., mkd. T22S R6W S35 BT.
Corner is located 10 ft. W. of a down, worn wire fence, bears generally N. and S.
(B) The closing cor. of secs. 27 and 34, perpetuated by Godfrey, Deputy County Surveyor's Office in 1992, monumented with an iron post, 2 1/2 ins. diam., firmly set, projecting 2 ins. above ground, with a brass cap mkd.
T 22 S R 6 W
C 527 S26
C 534 S26
1963
from which the remains of an original bearing tree

A roothole bears S. 36° W., 16.5 ft. dist. and the remains of bearing trees mkd. by Haines, Oregon PLS No. 239, reported by Beck
A roothole bears S. 80° W., 16.8 ft. dist., uphill of which is a down, decayed fir snag, 10 ins. diam., with a heated blaze.
A fir snag, 7 ins. diam., bears N. 78° W., 22.8 ft. dist., with a heated blaze.
and the remains of bearing trees mkd. by the Douglas County Surveyor's Office
A fir snag, 14 ins. diam., bears S. 4 1/2° W., 49.5 ft. dist., with fragmentary scribe marks visible on a partially heated double blaze.
A fir snag, 19 ins. diam., bears S. 43 1/2° W., 25.1 ft. dist., with a heated double blaze.
A fir, 22 ins. diam., bears S. 80 1/4° W., 43.6 ft. dist., with a heated double blaze.
A post spike bears N. 66 3/4° W., 24.0 ft. dist., driven flush with the top and in the center of a sawed fir stump, 24 ins. diam., with no marks visible.
and a new bearing tree
A fir, 6 ins. diam., bears N. 17 3/4° W., 20.9 ft. dist., mkd. X BT.

(C) The 1/4 sec. cor. of secs. 27 and 34, perpetuated by Godfrey, Deputy County Surveyor, in 1961, monumented with an iron post, 1 1/4 ins. diam., firmly set, projecting 18 ins. above ground (alongside of which is an iron pipe, 1/2 in. diam., firmly set, projecting 9 ins. above ground, wired to the cor.), with a brass cap mkd.
T 22 S R 6 W
COUNTRY SURVEYORS OFFICE
1/4 S 27
S 34
1961
from which the remains of the original bearing trees

A roothole bears S. 82° E., 14.5 ft. dist., alongside of which is an uprooted, decayed fir, size indeterminate, with no marks visible.
A fir, 38 ins. diam., bears N. 10° W., 5.9 ft. dist., with a heated blaze.
and bearing trees mkd. by Godfrey
A fir, 23 ins. diam., bears S. 40 1/4° E., 93.7 ft. dist., with a heated double blaze.
A fir, 33 ins. diam., bears N. 55 1/2° W., 35.1 ft. dist., with a heated double blaze.
(D) The cor. of secs. 27, 28, 33, and 34, perpetuated by Godfrey, Deputy County Surveyor, in 1961, monumented with an iron post, 1 1/4 ins. diam., firmly set, projecting 11 ins. above ground, with a brass cap mkd.
COUNTRY SURVEYORS OFFICE
T 22 S R 6 W
S 28 S 27
S 33 S 34
1961
from which a bearing tree mkd. by Nicklin
A maple, 19 ins. diam., bears S. 72 1/2° E., 12.5 ft. dist., with reverse scribe marks T W S 34 BT visible on interior of blaze.
and the remains of bearing trees mkd. by person(s) unknown, reported by Godfrey
A cedar, 29 ins. diam., bears N. 14 3/4° E., 12.7 ft. dist., with a heated blaze.
A hemlock, 18 ins. diam., bears N. 62° E., 25.5 ft. dist., with a heated blaze.
A roothole bears S. 63 1/2° W., 11.0 ft. dist., downhill of which is an uprooted, decayed hemlock, 16 ins. diam., with a heated blaze.
and new bearing trees
A cedar, 18 ins. diam., bears S. 36 1/2° W., 21.6 ft. dist., mkd. T22S R6W S33 BT.
A hemlock, 6 ins. diam., bears N. 76 3/4° W., 32.5 ft. dist., mkd. X BT.
Corner is located on a steep N. slope, 185 ft. S. of a ravine, drains S. 80° E.

(E) The 1/4 sec. cor. of secs. 27 and 28, perpetuated by Godfrey, Deputy County Surveyor, in 1961, from original evidence no longer in existence, monumented with an iron post, 1 1/4 ins. diam., firmly set, projecting 10 ins. above ground, with a brass cap mkd.
COUNTRY SURVEYORS OFFICE
T 22 S R 6 W
1/4 S 28 S 27
1961
from which the remains of a bearing tree mkd. by person(s) unknown, reported by Godfrey
A fir, 44 ins. diam., bears N. 26° E., 50.9 ft. dist., with a heated blaze.
A saved cedar stump, 38 ins. diam., bears S. 56 1/2° W., 20.0 ft. dist., with no marks visible.
and a new bearing tree
A hemlock, 4 ins. diam., bears S. 36 1/2° W., 7.0 ft. dist., mkd. X BT.
Corner is located on a steep N. slope, 10 ft. S. of a creek, course S. 50° E.

RETRACEMENT

(F) The cor. of secs. 21, 22, 27, and 28, monumented with an iron post, 2 1/2 ins. diam., firmly set, projecting 1 in. above ground (alongside of which is a threaded iron rod, 1 1/2 ins. diam., firmly set, projecting 7 ins. above ground, with a hex nut at top), with a brass cap mkd.
T 22 S R 6 W
S 21 S 22
S 28 S 27
1963
from which the remains of an original bearing tree

A saved, decayed fir stump, 37 ins. diam., bears S. 3° E., 75.2 ft. dist., with no marks visible.
and the remains of bearing trees mkd. by Beck
A saved fir stump, 39 ins. diam., bears S. 38 1/2° W., 60.7 ft. dist., with a heated blaze.
A fir, 36 ins. diam., bears N. 7° W., 104.9 ft. dist., with a heated blaze.
and new accessories
A fir, 12 ins. diam., bears N. 17 1/2° E., 34.0 ft. dist., mkd. T22S R6W S22 BT.
A fir, 22 ins. diam., bears S. 74 1/4° E., 14.1 ft. dist., mkd. T22S R6W S27 BT.
A cedar, 30 ins. long, 5/8 in. diam., driven 29 ins. in the ground for a reference monument, bears S. 45° 17' 45" W., 24.94 ft. dist., with aluminum cap mkd. RM T22S R6W S28
24.9 FT TO COR 2010 and an arrow pointing to the cor.
Corner is located 55 ft. N. of a ravine, drains S. 65° E.

(G) The cor. of secs. 23, 24, 25, and 26, monumented with an iron post, 2 1/2 ins. diam., firmly set, projecting 4 ins. above ground, with a brass cap mkd.
T 22 S R 6 W
S 23 S 24
S 26 S 25
1993
from which the remains of the original bearing trees

A fir, 48 ins. diam., bears N. 60° E., 23.8 ft. dist., with no marks visible. (Record, 56 ins. diam., 19.8 ft. dist.)
A hollow and burst cedar snag, 43 ins. diam., bears S. 47° W., 71.3 ft. dist., with no marks visible.
A saved, decayed fir stump, 31 ins. diam., bears N. 30° E., 29 ft. dist., with scribe marks T22S R6W S25 CS BT visible on bark blaze.
and the remains of bearing trees mkd. by Godfrey, Deputy County Surveyor, in 1961, reported by Bedell
A decayed fir stump, size indeterminate, bears N. 85° E., 12.2 ft. dist., with no marks visible.
A fir, 29 ins. diam., bears S. 36° E., 49.2 ft. dist., with a heated double blaze.
A fir, 12 ins. diam., bears S. 51 1/2° W., 38.9 ft. dist., with a heated double blaze.
and a bearing tree mkd. by Bedell
A fir, 12 ins. diam., bears N. 39° W., 11.9 ft. dist., with a heated blaze.

(H) The 1/4 sec. cor. of secs. 23 and 26, monumented with an iron post, 2 1/2 ins. diam., firmly set, projecting 2 ins. above ground, with a brass cap mkd.
T 22 S R 6 W
S 23
1963
from which the remains of an original bearing tree

A saved, decayed fir stump, size indeterminate, bears N. 75° W., 43.6 ft. dist., with no marks visible.
and a bearing tree mkd. by person(s) unknown, reported by Bedell
A madrone, 52 ins. diam., bears N. 55° W., 81.8 ft. dist., with no marks visible on a partially healed, decayed blaze.
and the remains of a bearing tree mkd. by Haines, Oregon PLS No. 239, in 1958, reported by Bedell
A roothole bears S. 39° W., 24.4 ft. dist., uphill of which is an uprooted, decayed fir, size indeterminate, with no marks visible on an opened, decayed blaze.
A fir, 8 ins. diam., bears S. 15° W., 25.4 ft. dist., with a heated blaze.
(I) The cor. of secs. 22, 23, 26, and 27, monumented with an iron post, 2 1/2 ins. diam., firmly set, flush with ground, (alongside of which is a "T" shaped iron bar, 3/4 in. diam., with a brass washer on top, mkd. WILLFORD N. HAINES SURVEY 239 DRAIN ORE., with a tack in center), with a brass cap mkd.
T 22 S R 6 W
S 22 S 23
1975
RPLS 377
from which the remains of an original bearing tree

A saved fir stump, 39 ins. diam., bears S. 74° W., 11.2 ft. dist., with a heated blaze.
and the remains of bearing trees mkd. by Haines, Oregon PLS No. 239, in 1958, reported by Bedell
A fir, 54 ins. diam., bears S. 55° E., 9.9 ft. dist., with fragmentary scribe marks visible on bark blaze and a heated blaze.
A saved fir stump, 18 ins. diam., bears S. 43° W., 13.0 ft. dist., with no marks visible.
and a bearing tree mkd. by Bedell
A fir, 12 ins. diam., bears S. 22° W., 13.2 ft. dist., with a heated blaze.

UNITED STATES DEPARTMENT OF THE INTERIOR
BUREAU OF LAND MANAGEMENT
Portland, Oregon
The survey represented by this plat, having been correctly executed in accordance with the requirements of law and the regulations of this Bureau, is hereby accepted.
For the Director
Chief Cadastral Surveyor of Oregon
Date

(J) The 1/4 sec. cor. of secs. 23 and 26, monumented with an iron post, 2 1/2 ins. diam., firmly set, projecting 2 ins. above ground, with a brass cap mkd.
T 22 S R 6 W
S 23
1/4 S 22
S 27
T 22 S R 6 W
1963
from which the remains of an original bearing tree

A saved, decayed fir stump, size indeterminate, bears N. 75° W., 43.6 ft. dist., with no marks visible.
and a bearing tree mkd. by person(s) unknown, reported by Bedell
A madrone, 52 ins. diam., bears N. 55° W., 81.8 ft. dist., with no marks visible on a partially healed, decayed blaze.
and the remains of a bearing tree mkd. by Haines, Oregon PLS No. 239, in 1958, reported by Bedell
A roothole bears S. 39° W., 24.4 ft. dist., uphill of which is an uprooted, decayed fir, size indeterminate, with no marks visible on an opened, decayed blaze.
A fir, 8 ins. diam., bears S. 15° W., 25.4 ft. dist., with a heated blaze.

(K) The cor. of secs. 22, 23, 26, and 27, monumented with an iron post, 2 1/2 ins. diam., firmly set, flush with ground, (alongside of which is a "T" shaped iron bar, 3/4 in. diam., with a brass washer on top, mkd. WILLFORD N. HAINES SURVEY 239 DRAIN ORE., with a tack in center), with a brass cap mkd.
T 22 S R 6 W
S 22 S 23
1975
RPLS 377
from which the remains of the original bearing trees

A saved, decayed fir stump, 52 ins. diam., bears S. 58° E., 35.6 ft. dist., with no marks visible.
A roothole bears S. 40° W., 1.3 ft. dist., alongside of which is an uprooted, decayed fir stump, size indeterminate, with no marks visible.
A roothole bears N. 22° W., 9.9 ft. dist., alongside of which is an uprooted, decayed fir stump, 20 ins. diam., with axe marks visible on a decayed, opened and bearing trees mkd. Godfrey, Deputy County Surveyor, in 1961, reported by Beck
A fir, 30 ins. diam., bears N. 29° E., 25.1 ft. dist., with a heated double blaze.
A fir, 17 ins. diam., bears S. 39 1/2° W., 21.8 ft. dist., with a heated double blaze.
A fir, 30 ins. diam., bears N. 55 1/2° W., 9.9 ft. dist., with a heated double blaze.
and a new accessory
A rebar, 30 ins. long, 5/8 in. diam., driven 28 ins. in the ground for a reference monument, bears S. 47° 13' 55" E., 18.34 ft. dist., with an aluminum cap mkd. RM T22S R6W S26 18.3 FT TO COR 2010 and an arrow pointing to the cor.
Corner is located S. 89 3/4° E., 66.3 ft. dist. from a wood post at the cor. of barbed-wire fences extending N. 88° W. and South. Corner is further located 205 ft. W. of a gravel road, 11 ft. wide, bears N. and S.

(L) The 1/4 sec. cor. of secs. 22 and 27, monumented with an iron post, 2 1/2 ins. diam., firmly set, projecting 2 ins. above ground, with a brass cap mkd.
T 22 S R 6 W
S 27
1963
from which the remains of an original bearing tree

A saved fir stump, 39 ins. diam., bears S. 55° E., 9.9 ft. dist., with fragmentary scribe marks visible on bark blaze and a heated blaze.
A saved fir stump, 18 ins. diam., bears S. 43° W., 13.0 ft. dist., with no marks visible.
and a bearing tree mkd. by Bedell
UNITED STATES DEPARTMENT OF THE INTERIOR
BUREAU OF LAND MANAGEMENT
Portland, Oregon
The survey represented by this plat, having been correctly executed in accordance with the requirements of law and the regulations of this Bureau, is hereby accepted.
For the Director
Chief Cadastral Surveyor of Oregon
Date

(M) The 1/4 sec. cor. of secs. 22 and 27, monumented with an iron post, 2 1/2 ins. diam., firmly set, projecting 2 ins. above ground, with a brass cap mkd.
T 22 S R 6 W
S 27
1963
from which the remains of an original bearing tree

A saved, decayed fir stump, size indeterminate, bears N. 75° W., 43.6 ft. dist., with no marks visible.
and a bearing tree mkd. by person(s) unknown, reported by Bedell
A madrone, 52 ins. diam., bears N. 55° W., 81.8 ft. dist., with no marks visible on a partially healed, decayed blaze.
and the remains of a bearing tree mkd. by Haines, Oregon PLS No. 239, in 1958, reported by Bedell
A roothole bears S. 39° W., 24.4 ft. dist., uphill of which is an uprooted, decayed fir, size indeterminate, with no marks visible on an opened, decayed blaze.
A fir, 8 ins. diam., bears S. 15° W., 25.4 ft. dist., with a heated blaze.

THIS PLAT CONSTITUTES THE ENTIRE RECORD OF THE SURVEY

OFFICIALLY FILED: 2/16/2012