

FILED  
 Date: 1/25/2012 By: JC  
 This survey consists of:  
 Map: THIS PLAT, 2012-1 A+B  
 Narrative: WITH A COPY IN  
 Corner Rpt VOL 57 PG 22763-4

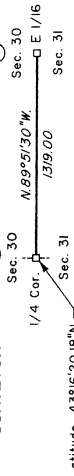
TOWNSHIP 26 SOUTH, RANGE 7 WEST, OF THE WILLAMETTE MERIDIAN, OREGON

DEPENDENT RESURVEY

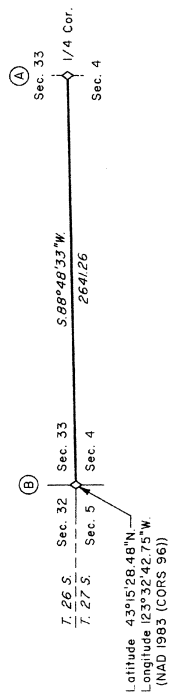
SHEET / OF 2

OFFICIALLY FILED: 12/15/2011

DOUGLAS COUNTY  
 SURVEYOR



Latitude 43° 15' 28.48" N  
 Longitude 123° 32' 42.75" W  
 (NAD 1983 (CORS 96))



Latitude 43° 15' 28.48" N  
 Longitude 123° 32' 42.75" W  
 (NAD 1983 (CORS 96))

This plat constitutes the entire record of the dependent resurvey of a portion of the south boundary and subdivisional lines, Township 26 South, Range 7 West, Willamette Meridian, Oregon, designed to restore the corners in their true original locations according to the best available evidence.

The survey was executed in accordance with the specification set forth in the Manual of Surveying Instructions (2009), and the special instructions dated March 30, 2010, approved April 1, 2010, for Group No. 2306, Oregon.

The directions of the lines are based on the true meridian as determined by Global Positioning System (GPS) measurements, carried forward by sustained angulation using conventional survey techniques. All measurements along the lines were derived through the use of electronic measuring equipment. Measured distances and directions have been adjusted by computer software that incorporates a least squares adjustment routine. The adjusted mean bearings and mean horizontal ground elevation distances are reported to the nearest second and 0.01 foot.

Preliminary to the resurvey, the lines of the prior surveys were retraced and a search was made for all corners and other calls to record. The retracement data were thoroughly verified and only the true line field data are given hereon. Only those lines bounding public land were posted and biased.

Official acreage and lot designations of Federal interest land are as shown on the plats approved October 22, 1860, and January 14, 1862, and the plat accepted May 12, 1977.

Each new bearing tree has a 2 1/2 inch x 1/4 inch magnetic nail (Mag Nail) driven at the base on right side center, unless otherwise noted in the corner description.

The geographic positions shown hereon were determined by ties from temporary GPS control points, utilizing dual frequency, carrier phase GPS receivers, relative to the National Spatial Reference System.

Survey executed by Kenneth W. Soveland, Cadastral Surveyor, beginning April 9, 2010, and completed April 22, 2010. He was assisted by Robert NM Durming and Joel R. Herzberg, Surveying Technicians.

**LEGEND**  
 ◇ Original corner previously remonumented  
 □ Corner previously established or reestablished

UNITED STATES DEPARTMENT OF THE INTERIOR  
 BUREAU OF LAND MANAGEMENT

Portland, Oregon

The survey represented by this plat, having been correctly executed in accordance with the requirements of law and the regulations of this Bureau, is hereby accepted.

For the Director  
*Mary M. Hunt*  
 Chief Cadastral Surveyor of Oregon

Date  
 December 1, 2011

The history of official Federal surveys pertaining to this resurvey is as follows:

In 1856, Dennis Hathorn, U.S. Deputy Surveyor, surveyed the township lines and a portion of the subdivisional lines as shown on the official plat of survey approved July 7, 1856.

In 1881, Addison R. Flint and Samuel C. Flint, U.S. Deputy Surveyors, retraced a portion of the south boundary and surveyed the remainder of subdivisional lines as shown on the official plat approved January 14, 1882.

In 1959, Irving Zipek, Jr. and Leo J. Martin, Cadastral Surveyors, retraced and reestablished a portion of the west boundary and subdivisional lines, and remonumented certain corners, as shown on the official plat of survey accepted April 15, 1960.

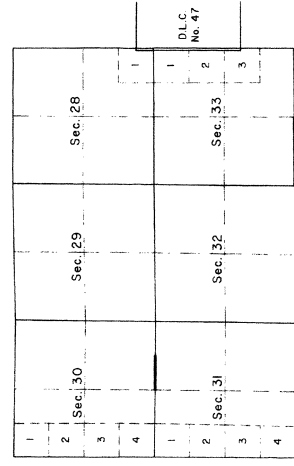
In 1971-74, Peter A. Peterson, Daniel L. Berry, Gordon S. Popken, and Harvey E. Wofford, Cadastral Surveyors, resurveyed a portion of the south and north boundaries and a portion of the subdivisional lines and claim lines as shown on the official plat of survey approved May 12, 1977.

In 2001-02, Timothy J. Moore, Cadastral Surveyor, and Robert H. Browning, Surveying Technician, resurveyed a portion of the south boundary and subdivisional lines and subdivided sections 21 and 32 as shown on the official plat of survey accepted September 13, 2004.

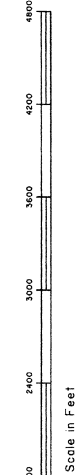
In 2006, Timothy J. Moore, Cadastral Surveyor, and Robert H. Browning, Surveying Technician, resurveyed a portion of the west boundary and subdivisional lines, and west boundary of Donation Land Claim No. 47, and subdivided sections 18 and 33, as shown on the official plat of survey accepted June 15, 2010.

The following records filed in the Douglas County Surveyor's Office are referred to in subsequent corner descriptions and are referenced by the surveyor's last name, title or registration number (PLS), and year.

Year	Name, Title/Reg. No.	File No.
1961	James Byron, Dep. Co Surveyor	CS49/79
1970	Douglas Co. Surveyor's Office	CS54/23
1970	James Byron, Dep. Co Surveyor	M39-16
2000	Tony Hostetter, PLS 1975	M34-63
2000	Tony Hostetter, PLS 1975	CS65/30-10



LOCATION DIAGRAM  
 (NOT TO SCALE)



I, Kenneth W. Soveland, Cadastral Surveyor, HEREBY CERTIFY upon honor, that in pursuance of special instructions bearing the approval date of the 1st day of April, 2010, and the assignment instructions bearing the date of the 9th day of April, 2010, I have dependently resurveyed a portion of the south boundary and subdivisional lines, Township 26 South, Range 7 West, Willamette Meridian, Oregon, which is represented upon this plat as having been executed by me and under my direction; and that said resurvey has been made in strict conformity with said special instructions, the Manual of Surveying Instructions, and in the specific manner described on this plat.

*Kenneth W. Soveland*  
 Cadastral Surveyor  
 November 21, 2011  
 Date