

Date: 11/28/2011 By: JC  
This survey consists of:  
Map: THIS MAP AND A COPY IN  
Narrative: VOL. 57  
Corner Rpt.: PAGE 22690  
DOUGLAS COUNTY  
SURVEYOR

The history of surveys pertaining to this retracement is as follows:  
In 1858, Dennis Hethorn, U.S. Deputy Surveyor, surveyed a portion of the south boundary and subdivisional lines, and the Umpqua River was meandered.  
In 1893-94, Williams R. Whipple, U.S. Deputy Surveyor, surveyed a portion of the south boundary and subdivisional lines.  
In 1896, William P. Heyton, U.S. Deputy Surveyor, retraced a portion of the north boundary and surveyed a portion of the subdivisional lines of T. 25 S., R. 7 W.  
In 1958, Irving Ziral, Jr., Cadastral Surveyor, remonumented the corner of sections 3 and 4, only, on the north boundary of T. 25 S., R. 7 W., during the course of a dependant resurvey.  
In 1973, Daniel L. Berry and Charles E. Akin, Jr., Cadastral Surveyors, dependently resurveyed a portion of the south boundary and subdivisional lines.  
In 1979, James E. Jelley and Wayne L. Rogers, Cadastral Surveyors, resurveyed a portion of the subdivisional lines and subdivided section 33.  
In 1997, Brian S. Siebold and Wayne L. Rogers, Cadastral Surveyors, resurveyed a portion of the north boundary and subdivisional lines of T. 25 S., R. 7 W.  
In 2004, A. Bert Skeestick, Cadastral Surveyor, retraced a portion of the north boundary and surveyed a portion of the subdivisional lines of T. 25 S., R. 7 W.

Described by Skeestick in 2004  
Described by Skeestick in 2004  
Described by Jelley and Rogers in 1979  
The 1/4 sec. cor. of sec. 4 only, on the N. bdy. of T. 25 S., R. 7 W., recovered by Jelley and Rogers in 1979, monumented with an iron post, 1 1/4 ins. diam., firmly set, projecting 9 ins. above the ground, with brass cap mkd.

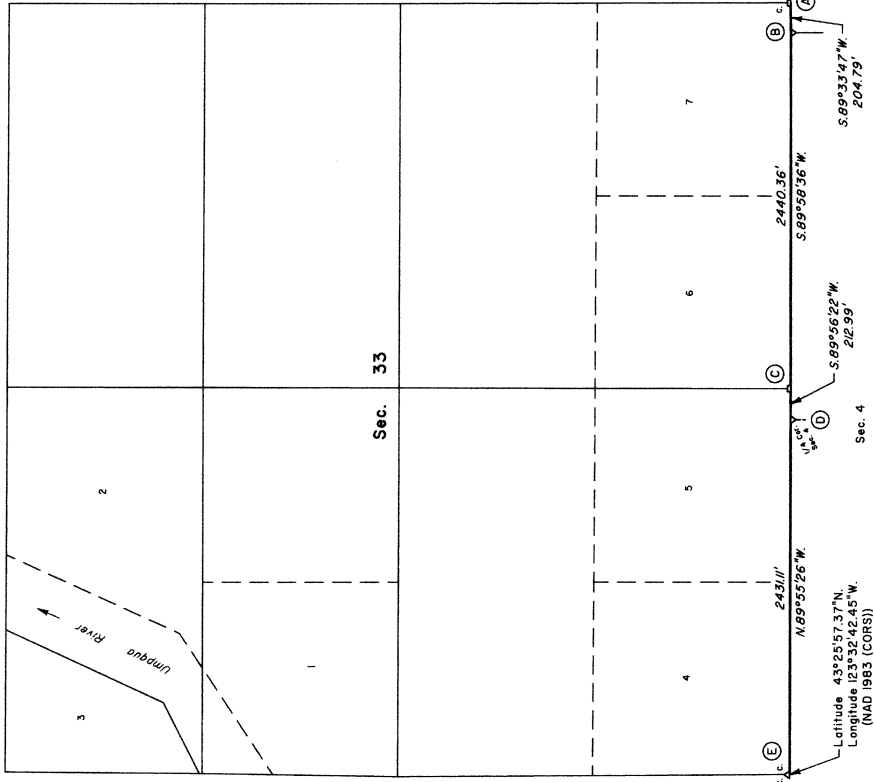
COUNTY SURVEYORS OFFICE  
T 24 S R  
1/4 S 4 W  
T 25 S  
1966

from which the remains of a bearing tree mkd. by Vernon Tracy, County Surveyor, recorded in the Douglas County Surveyors Record of Government Corners Renewed, T. 24 S., R. 7 W., Point Identifier No. 33700  
A fir, 31 ins. diam., bears N 8° E., 64.7 ft. dist., with a healed blaze.  
A fir, 10 ins. diam., bears S 22 1/4° W., 59.1 ft. dist., mkd. 1/4 S4 BT.  
A fir, 23 ins. diam., bears S 84 1/2° W., 44.9 ft. dist., mkd. 1/4 S4 BT.

Described by Siebold and Rogers in 1997

TOWNSHIP 24 SOUTH, RANGE 7 WEST, OF THE WILLAMETTE MERIDIAN, OREGON

RETRACEMENT



This plat represents the entire survey record of the retracement shown on this plat, although the south boundary, T. 24 S., R. 7 W., Willamette Meridian, Oregon.

The survey was executed in accordance with the specifications set forth in the Manual of Surveying Instructions, 1973. The retracement data were thoroughly verified and only the true line data is given hereon. Only those lines bounding or crossing public lands were blazed. The directions of the lines were determined by direct solar observations, carried forward by sustained angulation, and refer to the true meridian.

An analysis of the unadjusted field data assured a closure not exceeding 1:4000. The measured distance and direction have been adjusted by computer software that incorporates at least squares adjustment routine. The adjusted bearing and distance are reported to the nearest second and 0.01 foot.

The geodetic position shown hereon was determined by differentially corrected carrier phase GPS receivers, relative to the National Spatial Reference System.

Each new bearing tree has a 2 1/2 inch x 1/4 inch magnetic nail (Mag Nail) driven at the base on right side center.

Official lot designations and areas are as shown on the plats approved June 27, 1895, and January 26, 1983.

This retracement was executed by Timothy J. Moore, Cadastral Surveyor, and Robert H. Browning, Surveying Technician, beginning May 18, 2006, and completed May 30, 2006, pursuant to Assignment Instructions dated May 25, 2006, under Special Instructions for Group Number 2000, Oregon, dated and approved February 22, 2002; and Assignment Instructions for Group Number 2006, Oregon, dated and approved March 8, 2004. Instructions to Cancel Group 2000 and Reassign to Group Number 2300, dated October 12, 2007, under Group Number 2300, Oregon, Administrative File Number 0605, dated March 16, 2007, approved March 21, 2007. They were assisted by Thomas A. Holloman, Rodney A. Clark, Robert Durning, and David M. Powell, Surveying Technicians.

LEGEND  
◊ Original corner previously remonumented  
◻ Corner previously established

UNITED STATES DEPARTMENT OF THE INTERIOR  
BUREAU OF LAND MANAGEMENT  
Portland, Oregon

The retracement represented by this plat, having been correctly executed in accordance with the requirements of law and the regulations of this Bureau, is hereby accepted.

For the Director  
Mary J. M. Hatch  
Chief Cadastral Surveyor of Oregon

September 19, 2011  
Date

We, Timothy J. Moore, Cadastral Surveyor, and Robert H. Browning, Surveying Technician, HEREBY CERTIFY upon honor, that in pursuance of Special Instructions bearing date of the 22nd day of February, 2002, under Group 2000 and Special Instructions bearing date of the 8th day of March, 2004, under Group 2000, have rehabilitated certain corner points, and retraced a portion of the south boundary in Township 24 South, Range 7 West, Willamette Meridian, Oregon. Said retracement has been executed in strict conformity with said Special Instructions in the Manual of Instructions for the Survey of the Public Lands of the United States, 1973, and in specific manner described on this plat.

Timothy J. Moore  
Cadastral Surveyor  
Robert H. Browning  
Surveying Technician  
August 25, 2011  
Date  
8-25-11  
Date

