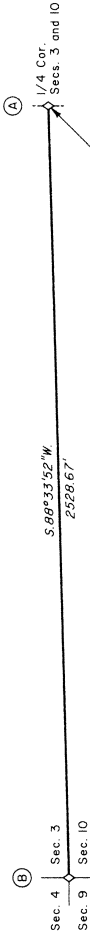


Date: 11/18/2011 By: JC
This survey consists of:
Map: THIS PAGE
Narrative: WITH A COPY IN
Corner Rpt. Vol. 57 pg 22689

DOUGLAS COUNTY
SURVEYOR

TOWNSHIP 30 SOUTH, RANGE 8 WEST, OF THE WILLAMETTE MERIDIAN, OREGON

RETRACEMENT



Latitude 42° 59' 59.377\"/>

Longitude 123° 37' 58.933\"/>

(NAD 1983 (CORRS 96))

(A) The 1/4 sec. cor. of secs. 3 and 10, perpetuated by James W. Byron, Deputy County Surveyor, in 1965, filed in the Douglas County Surveyor's Office, C.S. File No. 53/67, monumented with an iron post, 1 1/4 ins. diam., firmly set, projecting 16 ins. above ground, with a brass cap mkd.

COUNTY SURVEYORS OFFICE
T 30 S R 8 W
S 3
1/4
S 10
1965

from which the remains of the original bearing trees

A yew, 13 ins. diam., bears N. 10° E., 19.1 ft. dist., with no marks visible.

A sawed, hollow, and burnt cedar stump, 15 ins. diam., bears S. 12° W., 13.2 ft. dist., with no marks visible.

and the remains of bearing trees mkd. by Byron.

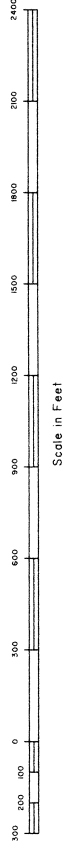
A decayed hemlock snag, 13 ins. diam., bears N. 32 1/2° E., 40.8 ft. dist., with fragmentary scribe marks visible on a partially healed double blaze.

A fir, 19 ins. diam., bears S. 38 3/4° W., 23.4 ft. dist., with a healed blaze.

I, Kenneth W. Saveland, Cadastral Surveyor, HEREBY CERTIFY upon honor, that in pursuance of special instructions bearing the approval date of the 21st day of March, 2007, and the assignment instructions bearing the date of the 22nd day of February, 2009, I have retraced a portion of the subdivision lines, Township 30 South, Range 8 West, of the Willamette Meridian, which were originally surveyed and monumented by me and under my direction; and that said survey has been made in strict conformity with said special instructions, the Manual of Surveying Instructions, and in the specific manner described on this plat.

Kenneth W. Saveland
Cadastral Surveyor

Date: AUGUST 31, 2011



This plat constitutes the entire record of the retracement of a portion of the subdivision lines, Township 30 South, Range 8 West, Willamette Meridian, Oregon.

The history of the official surveys pertaining to this retracement is as follows:

In 1882, William H. Byars, U. S. Deputy Surveyor, surveyed the subdivision lines and resurveyed the north boundary of the township, as shown on plat of official survey approved July 28, 1883, accepted October 20, 1883.

In 1985, Wayne L. Rogers, Lance J. Bishop, and James L. White, Cadastral Surveyors, resurveyed a portion of the subdivision lines, as shown on plat of official survey accepted September 4, 1987.

The survey was executed in accordance with the specification set forth in the Manual of Surveying Instructions (2009), and the special instructions dated March 16, 2007, approved March 21, 2007, for Group No. 2300, Administrative File No. 0903, Oregon.

The direction of the lines are based on the true meridian as determined by Global Positioning System (GPS) techniques and carried forward by sustained angulation using conventional survey techniques. All measurements along the lines were derived through the use of electronic measuring equipment. Measured distances and directions have been adjusted by computer software that incorporates a least squares adjustment routine. The adjusted mean bearings and mean horizontal ground elevation distances are reported to the nearest second and 0.01 foot.

Each new bearing tree has a 2 1/2 inch x 1/4 inch magnetic nail (Mag Nail) driven at the base on right side center, unless otherwise noted in the corner description.

Only those lines bounding public land were blazed.

The geographic position shown herein was determined by a tie from a temporary GPS control point, utilizing dual frequency carrier phase GPS receivers, and processed using the National Geodetic Survey's Online Positioning User Service (OPUS).

Survey executed by Kenneth W. Saveland, Cadastral Surveyor, beginning March 16, 2010 and completed April 2, 2010. He was assisted by Robert NMI Dunning and Joel R. Herzberg, Surveying Technicians.

Original corner previously reblazoned

UNITED STATES DEPARTMENT OF THE INTERIOR
BUREAU OF LAND MANAGEMENT
Portland, Oregon

The survey represented by this plat, having been correctly executed in accordance with the requirements of law and the regulations of this Bureau, is hereby accepted.

For the Director
Marilyn J. M. Hunt
Chief Cadastral Surveyor of Oregon

Date: September 16, 2011