

THIS PLAT REPRESENTS THE ENTIRE RECORD OF THE DEPENDENT RESURVEY

OFFICIALLY FILED: 6/18/11

TOWNSHIP 30 SOUTH, RANGE 8 WEST, OF THE WILLAMETTE MERIDIAN, OREGON SHEET 1 OF 2

This plat represents the entire survey record of the resurvey of the portion of the subdivision lines, T. 30 S., R. 8 W., Willamette Meridian, Oregon.

The history of surveys pertaining to this retracement is as follows:

In 1882, William H. Byars, U.S. Deputy Surveyor, surveyed the subdivision lines.

In 1963-64, Donald R. Beck and C. Albert White, registered surveyors, resurveyed the portion of the subdivision lines and remonumented certain corner points.

The retracement data were thoroughly verified and only the true line data are given herein. Only those lines bounding or crossing public lands were blazed.

The direction of the line was determined by direct solar observation, carried forward by sustained angulation, and refers to the true meridian.

The measured distances and directions have been adjusted by computer software that incorporates a least squares adjustment routine. The adjusted bearings and distances are reported to the nearest second and 0.01 foot.

The geographic position (NAD 1983 (CORSS96)) of the corner of sections 2, 3, 10, and 11, was determined by a tie from a temporary GPS control point, established utilizing aodc frequency, corner phase GPS receiver, and the National Geodetic Survey's Online User Positioning Service.

The geographic position (NAD 1983) of the 1/4 section corner of sections 28 and 33 was determined by a differentially corrected, mapping grade GPS receiver observation.

Each new bearing tree has a 2 1/2 inch x 1/4 inch magnetic nail (Mag Nail) driven at the base on right side center, unless otherwise noted in the corner description.

This retracement was executed by A. Bert Sheestick, Cadastral Surveyor, beginning July 26, 2006 and completed May 17, 2007; pursuant to Assignment Instructions dated June 28, 2006, under Special Instructions for Group Number 2100, Oregon, dated and approved March 8, 2004, and Assignment Instructions dated August 2, 2006, under Special Instructions for Group Number 2000, Oregon, dated and approved February 22, 2002; and instructions to Cancel Group 2000 and Reassign to Group 2300, Oregon, dated October 1, 2007, under Group Number 2000, Oregon, dated February 11, 2006, and Group Number 2000, Oregon, dated March 16, 2007; approved March 21, 2007. He was assisted by Dameron P. Barrows, Robert NMI Durning, and Thomas A. Hollomon, Surveying Technicians, Karl Krom, Surveying Aide, and Nicholas J. Browning and Michael S. Thompson, Laborers.

The retracement represented by this plat, having been correctly executed in accordance with the requirements of law and the regulations of this Bureau, is hereby accepted.

For the Director  
Mary J. M. Hunt  
Chief Cadastral Surveyor of Oregon

UNITED STATES DEPARTMENT OF THE INTERIOR  
BUREAU OF LAND MANAGEMENT  
Portland, Oregon

Date April 22, 2011

RETRACEMENT

A The 1/4 sec. cor. of secs. 2 and 11, monumented with an iron post, 2 1/2 ins. diam., firmly set, projecting 7 ins. above ground, with brass cap mkd.

B The cor. of secs. 2, 3, 10 and 11, monumented with an iron post, 2 1/2 ins. diam., firmly set, projecting 5 ins. above ground, with brass cap mkd.

T30S R8W S1/4 S2 1964  
SIO S11 1964

T30S R8W S1/4 S2 1964  
SIO S11 1964

from which the remains of bearing trees mkd. by Beck and White in 1963-1964

from which the remains of bearing trees mkd. by Beck and White in 1963-1964

A fir, 15 ins. diam., bears S. 62 1/4° E., 17.2 ft. dist., with a healed blaze.

A fir, 15 ins. diam., bears S. 62 1/4° E., 17.2 ft. dist., with a healed blaze.

A sowed fir stump, 16 ins. diam., bears N. 1/2° W., 15.2 ft. dist., with a healed blaze.

A sowed fir stump, 16 ins. diam., bears N. 1/2° W., 15.2 ft. dist., with a healed blaze.

A new bearing tree

A new bearing tree

The original stone, 10x10x3 ins., is buried alongside the iron post.

The original stone, 10x10x3 ins., is buried alongside the iron post.

A fir, 12 ins. diam., bears N. 42 1/2° E., 7.8 ft. dist., mkd T30S R8W S2 BT.

A fir, 12 ins. diam., bears N. 42 1/2° E., 7.8 ft. dist., mkd T30S R8W S2 BT.

A fir, 12 ins. diam., bears S. 16 3/4° E., 62.9 ft. dist., mkd T30S R8W S11 BT.

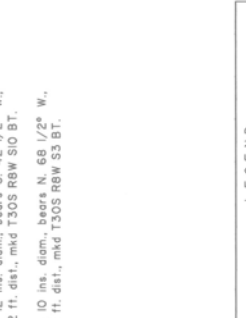
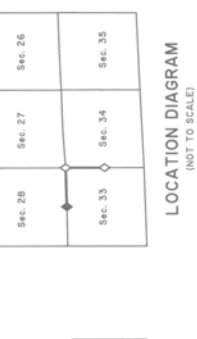
A fir, 12 ins. diam., bears S. 16 3/4° E., 62.9 ft. dist., mkd T30S R8W S11 BT.

A fir, 12 ins. diam., bears S. 42 1/2° W., 25.2 ft. dist., mkd T30S R8W S10 BT.

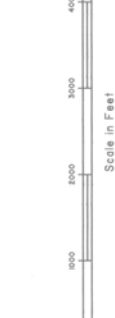
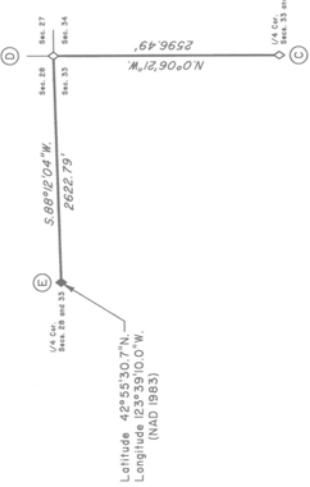
A fir, 12 ins. diam., bears S. 42 1/2° W., 25.2 ft. dist., mkd T30S R8W S10 BT.

A fir, 10 ins. diam., bears N. 68 1/2° W., 31.4 ft. dist., mkd T30S R8W S3 BT.

A fir, 10 ins. diam., bears N. 68 1/2° W., 31.4 ft. dist., mkd T30S R8W S3 BT.



LEGEND  
Original corner previously remonumented  
Original corner remonumented this survey



Scale in Feet

Date 4/20/2011