

THIS PLAT REPRESENTS THE ENTIRE RECORD OF THE DEPENDENT RESURVEY

ORIGINAL

OFFICIALLY FILED: 6/8/11

7488

FILED
 Date: 7/18/2011 BY: JC
 This survey consists of:
 Map: VOL. 56 PAGES
 Narrative: 22316-22318
 THIS PLAT REPRESENTS THE
 ENTIRE RECORD OF THE DEPENDENT RESURVEY
 Corner Pt.:
 DOUGLAS COUNTY
 SURVEYOR

TOWNSHIP 30 SOUTH, RANGE 6 WEST, OF THE WILLAMETTE MERIDIAN, OREGON

SHEET 1 OF 3

RETRACEMENT AND REHABILITATION

We, A. Bert Sheesick, Cadastral Surveyor, and Robert H. Browning, Surveying Technician, HEREBY CERTIFY upon honor that in pursuance of Special Instructions bearing date of the 16th day of March, 2007, we have retraced a portion of the north boundary, subdivisional lines, and subdivision of section 5, and rehabilitated certain corner points, Township 30 South, Range 6 West, Willamette Meridian Oregon, which is represented upon this plat as having been executed by us and under our direction. Said retracement has been executed in strict conformity with and in pursuance of the Manual of Instructions for the Survey of the Public Lands of the United States, 1975, and in a specific manner described on this plat.

[Signature] 3/31/2011 Date
 Cadastral Surveyor
[Signature] 4/03/2011 Date
 Surveying Technician

This plat represents the entire record of the retracement of a portion of the north boundary, subdivisional lines and subdivision of section lines of section 5, and rehabilitation of certain corner points, T. 30 S., R. 6 W., Willamette Meridian, Oregon.

A history of surveys pertaining to this retracement and rehabilitation is on Sheet 2 of 3.

This survey was executed by A. Bert Sheesick, Cadastral Surveyor, and Robert H. Browning, Surveying Technician, beginning June 9, 2009, and completed July 1, 2009, in accordance with the specification set forth in the Manual of Surveying Instructions, 1975; pursuant to Special Instructions dated March 16, 2007, approved March 21, 2007, which provided for the survey included under Group Number 2300, Oregon, Administrative File Number 0906, and Assignment to Robert H. Browning, William F. Goodson, and Marc A. Worripas, Surveying Technicians.

The retracement data were thoroughly verified and only the true line data are given hereon. Only those lines bounding or crossing public land were blazed.

The directions of the lines are based on the true meridian as determined by Global Positioning System (GPS) measurements.

This survey was performed using a combination of GPS and total station measurements. The GPS measurements utilized dual frequency carrier phase receivers and were executed in accordance with the Standards and Guidelines for Cadastral Surveys Using Global Positioning System Methods dated May 9, 2001, published by the U.S.D.A. Forest Service and U.S.D.I. Bureau of Land Management.

An analysis of the unadjusted field data assured a closure not exceeding 1:4000 in error. Measured distances and directions have been adjusted by computer software that incorporates a least squares adjustment routine. The adjusted bearings and distances are reported to the nearest second and 0.01 foot.

The geodetic positions shown hereon were determined by ties utilizing dual frequency carrier phase GPS receivers relative to the National Spatial Reference System.

UNITED STATES DEPARTMENT OF THE INTERIOR
 BUREAU OF LAND MANAGEMENT

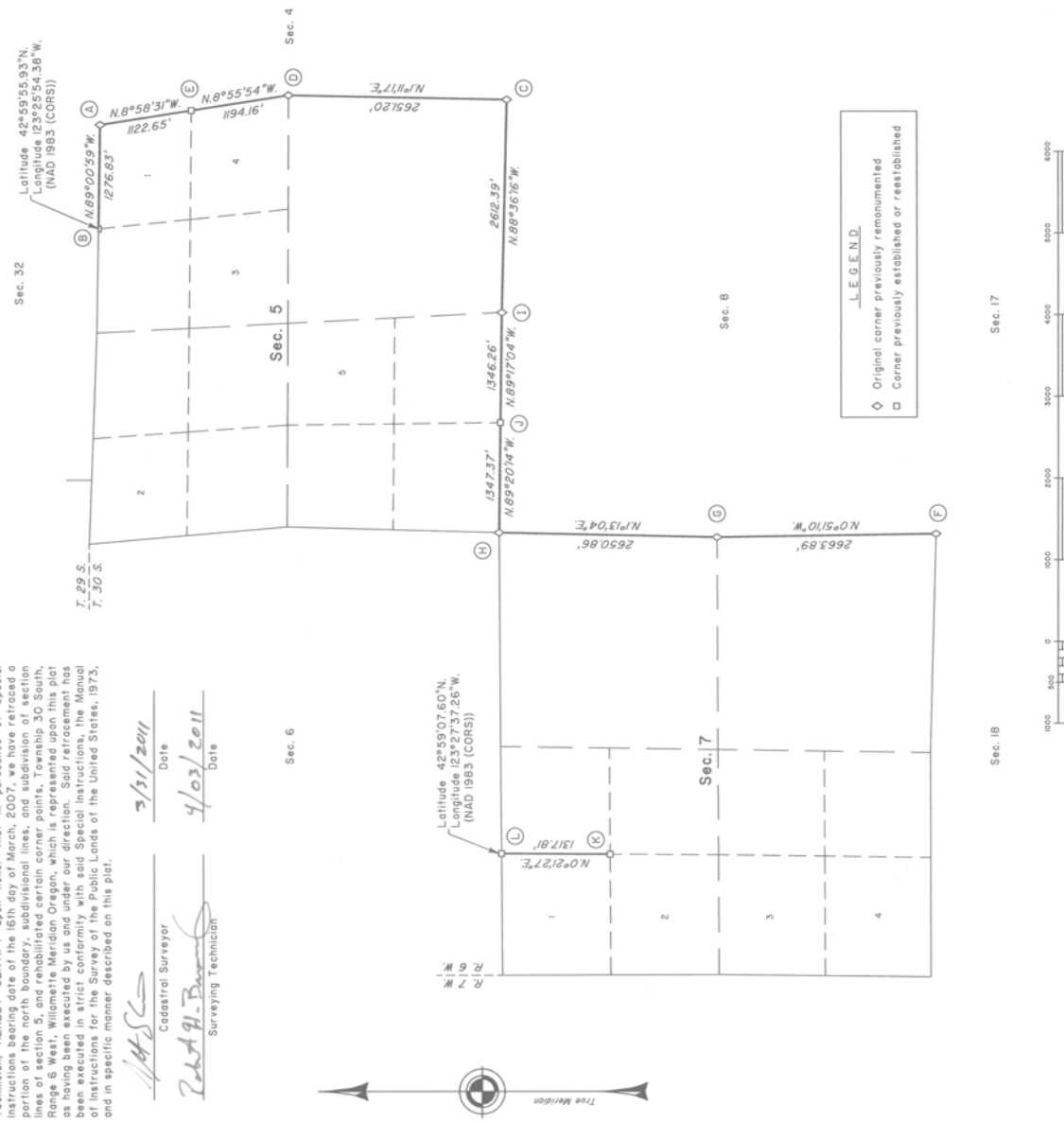
Portland, Oregon

The retracement and rehabilitation represented by this plat, having been correctly executed in accordance with the requirements of law and the regulations of this Bureau, is hereby accepted.

For the Director

[Signature]
 Chief Cadastral Surveyor of Oregon

April 22, 2011 Date



A.C.W.