

TOWNSHIP 29 SOUTH, RANGE 4 WEST, OF THE WILLAMETTE MERIDIAN, OREGON

SHEET 1 OF 3

FILED
 Date: 7/18/2011 By: JC
 This survey consists of:
 Map VOL. 56 PAGES
 Narrative: 22313-22315
 Corner Rpt. THIS RECORD OF THE
 DOUGLAS COUNTY
 SURVEYOR

RETRACEMENT

This plat represents the entire survey record of a retracement of a portion of the east boundary, a portion of the north boundary, and a portion of the subdivision lines, T. 29 S., R. 4 W., Willamette Meridian, Oregon.

The survey was executed in accordance with the specification set forth in the Manual of Surveying Instructions, 1973. The retracement data were thoroughly verified and adjusted in accordance with the instructions. Only those lines bounding or crossing public lands were blazed. The directions of the lines were determined by GPS observations, carried forward by sustained angulation, and refer to the true meridian.

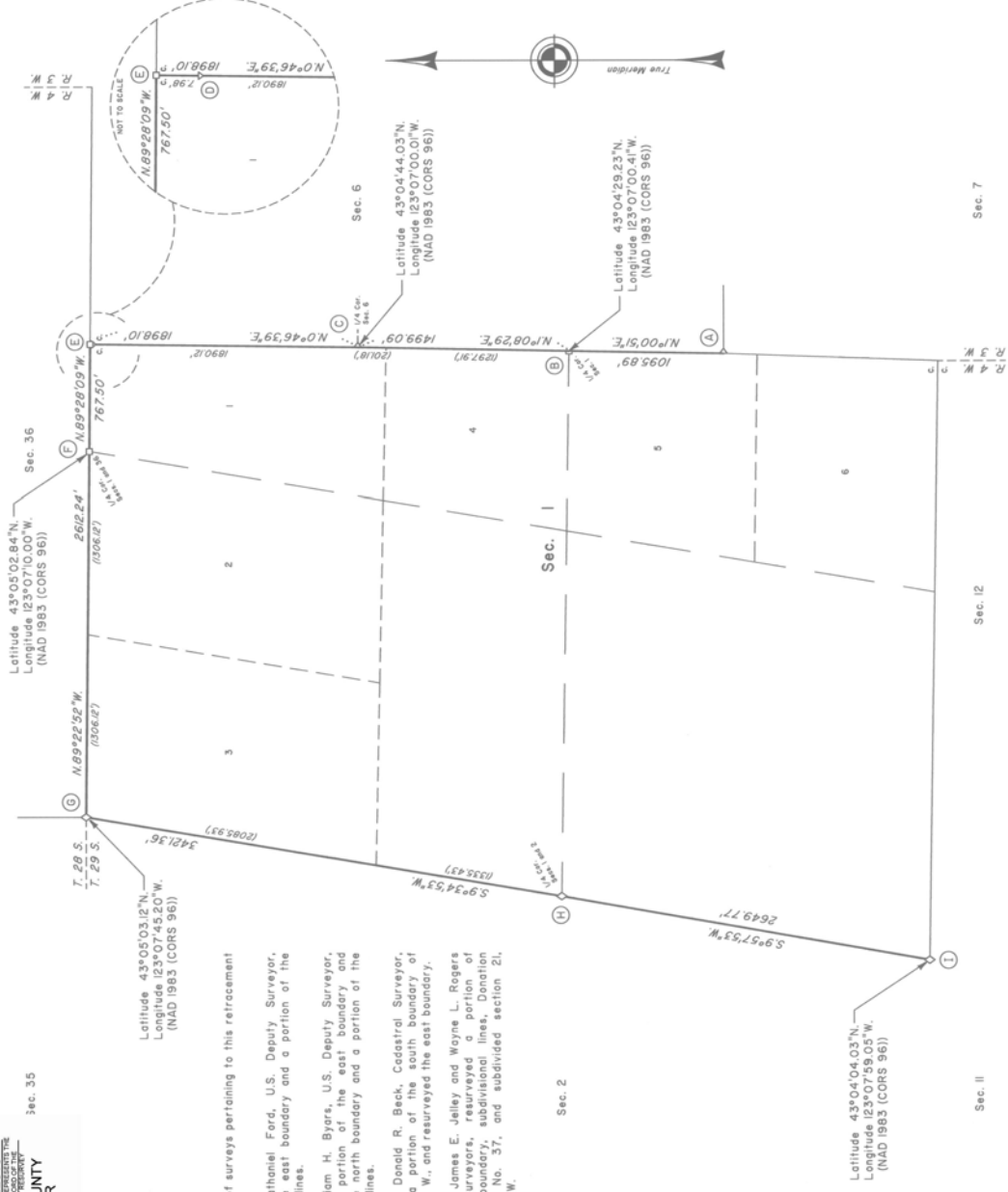
An analysis of the unadjusted field data assured a closure not exceeding 1:4000 in error. The measured distance and direction have been adjusted by computer software that incorporates a least squares adjustment routine. The adjusted bearing and distance are reported to the nearest second and 0.01 foot.

The geodetic position shown hereon was determined by differentially corrected carrier phase GPS receivers relative to the National Spatial Reference System.

Each new bearing tree has a 2 1/2 inch x 1/4 inch magnetic nail (Mag Nail) driven at the base on right side center, unless otherwise noted in the corner description.

Official lot designations and areas are as shown on the plat approved August 11, 1981.

This retracement was executed by A. Bert Skeestick, Cadastral Surveyor, beginning May 23, 2006, and completed June 22, 2006; pursuant to Assignment Instructions dated June 7, 2006, under Special Instructions for Group Number 2000, Oregon, dated and approved February 22, 2002; and Assignment Instructions dated May 15, 2006, under Special Instructions for Group Number 2000, Oregon, dated and approved March 18, 2004; and Special Instructions for Group Number 2300, Oregon, dated October 12, 2007 under Group Number 2300, Oregon, Administrative File Number 0602, dated March 16, 2007; approved March 21, 2007. He was assisted by Doreen P. Barrows and Robert Durning, Surveying Technicians.



The history of surveys pertaining to this retracement is as follows:

In 1855, Nathaniel Ford, U.S. Deputy Surveyor, surveyed the east boundary and a portion of the subdivision lines.

In 1881, William H. Byers, U.S. Deputy Surveyor, retraced a portion of the east boundary and surveyed the north boundary and a portion of the subdivision lines.

In 1964-65, Donald R. Beck, Cadastral Surveyor, retraced a portion of the south boundary of T. 28 S., R. 4 W., and retraced the east boundary.

In 1979-80, James E. Jelley and Wayne L. Rogers, Cadastral Surveyors, retraced a portion of the north boundary, subdivision lines, Donation Land Claim No. 37, and subdivided section 21, T. 29 S., R. 3 W.

Latitude 43° 04' 04.03" N
 Longitude 123° 07' 00.01" W
 (NAD 1983 (CORS 96))

Sec. II

Sec. 7

Sec. 12

Sec. 36

- LEGEND
- ◇ Original corner previously remonumented
 - Corner previously established or reestablished

UNITED STATES DEPARTMENT OF THE INTERIOR
 BUREAU OF LAND MANAGEMENT

Portland, Oregon

The retracement represented by this plat, having been correctly executed in accordance with the requirements of law and the regulations of this Bureau, is hereby accepted.

For the Director

John P. Zimmerman, Acting

Chief Cadastral Surveyor of Oregon

3/31/2011

Date

April 6, 2011
 Date

Cadastral Surveyor