

ORIGINAL

TOWNSHIP 24 SOUTH, RANGE 8 WEST, OF THE WILLAMETTE MERIDIAN, OREGON

SHEET 1 OF 3

DEPENDENT RESURVEY

This plat represents the entire record of the dependent resurvey of a portion of the east boundary and subdivisional lines, T. 24 S., R. 8 W., Willamette Meridian, Oregon, designed to restore the corners in their true original locations according to the best available evidence.

The survey was executed in accordance with the specification set forth in the Manual of Surveying Instructions, 1973.

The survey was performed utilizing both conventional and NAVSTAR GPS satellite techniques. The GPS measurements utilized dual frequency, carrier phase GPS receivers. The baselines were computed in and adjusted by least squares analysis using Trimble Geomatics Office (TGO), version 1.62.

Preliminary to the resurvey, the lines of the prior surveys were retraced and search was made for all corners and other calls of record. Identified corners were reestablished in their original positions. Lost corners were reestablished and monumented at appropriate locations. The monumentation and reestablishment data were thoroughly verified and only the true line data is given herein. Only those lines bounding or crossing public lands were blazed.

The directions of the lines are based on the true meridian as determined by a combination of direct solar observations and GPS measurements, carried forward by sustained angulation using conventional survey techniques. Distances along the lines were derived through the use of electronic measuring equipment.

An analysis of the unadjusted field data asured a closure not exceeding 1:4000 in error. Conventionally measured distances and directions have been adjusted by computer software that incorporates a least squares adjustment routine. The adjusted bearing and distance are reported to the nearest second and 0.01 foot.

The geographic position (NAD 1983 (CORS 96)) of the corner of sections 19, 24, 25, and 30, on the east boundary of the dependent resurvey, is shown by a triangle. The GPS control point established utilizing dual frequency, carrier phase GPS receivers.

This dependent resurvey was executed by A. Bert Sheestick, Cadastral Surveyor, beginning May 23, 2005, completed January 5, 2006, pursuant to Special Instructions for Grad. A. 2002, O.G.O., under Special Instruction for Grad. A. 2002, O.G.O., dated and approved February 23, 2005. He was assisted by Robert NMI Durning, Surveying Technician, Mathew W. Yeazel, Surveying Aide, and David M. Powell, Laborer.

UNITED STATES DEPARTMENT OF THE INTERIOR
BUREAU OF LAND MANAGEMENT

Portland, Oregon

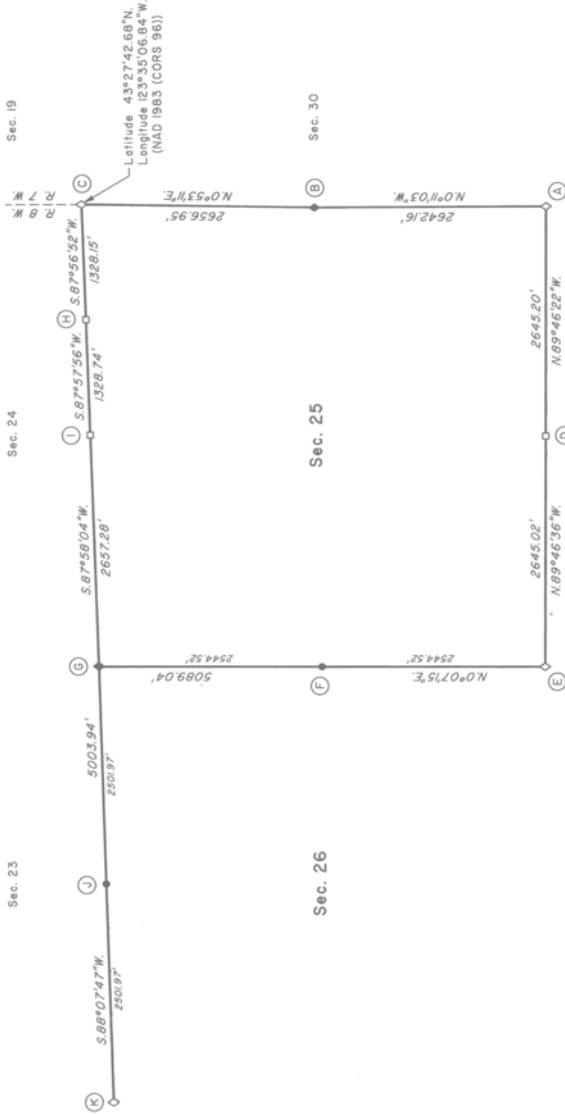
This plat, which constitutes the entire record of this survey, having been correctly recorded in accordance with the requirements of law and the regulations of this Bureau, is hereby accepted.

For the Director

John P. Farnsworth, Acting

Chief Cadastral Surveyor of Oregon

April 8, 2011
Date



The history of surveys pertaining to this resurvey is as follows:

In 1857-1858, Dennis Hatherly, U.S. Deputy Surveyor, surveyed a portion of the east boundary and a portion of the subdivisional lines.

In 1894, Henry L. Chandler, U.S. Deputy Surveyor, completed a survey of the east boundary and subdivisional lines.

In 1959, Harold D. Corbin, Cadastral Surveyor, dependently resurveyed a portion of the south boundary and subdivisional lines and monumented certain original corner points.

In 1986, Dale T. Bedell, Cadastral Surveyor, dependently resurveyed a portion of the south boundary and subdivisional lines.

LEGEND
◊ Original corner previously monumented
◆ Original corner monumented this survey
□ Corner previously established or reestablished
● Corner established or reestablished this survey



Cadastral Surveyor
Date 7/31/2011

I, A. Bert Sheestick, Cadastral Surveyor, HEREBY CERTIFY upon honor, that in pursuance of Special Instructions bearing date of the 23rd day of February, 2005, I have dependently resurveyed a portion of the east boundary and subdivisional lines, Township 24 South, Range 8 West, Willamette Meridian, Oregon. Said survey has been conducted in accordance with the Manual of Surveying Instructions, 1973, and in a specific manner described on this plat.

7497

FILED
Date: 7/18/2011 By: JC
This survey consists of:
Map: VOL. 56 PAGES
Narrative: 22310-22312
Corner Rpt: THIS PLAT REPRESENTS THE ENTIRE RECORD OF THE DEPENDENT RESURVEY
DOUGLAS COUNTY
SURVEYOR