

FILED

Date: 7/18/2011 By: JC
This survey consists of:
Map: VOL. 56 PAGE
Narrative: 22309
Corner Rpt.: THIS PLAT REPRESENTS THE
DEPENDENT RESURVEY
DOUGLAS COUNTY
SURVEYOR

TOWNSHIP 20 SOUTH, RANGE 6 WEST, OF THE WILLAMETTE MERIDIAN, OREGON

RETRACEMENT

This plat represents the entire record of the retracement of a portion of the subdivision lines, T. 20 S., R. 6 W., Willamette Meridian, Oregon.
The history of surveys pertaining to this retracement is as follows:
In 1872, John H. McClung, U.S. Deputy Surveyor, surveyed the north, south, and west boundaries and the subdivisional lines.
In 1950, Marvin J. Lylie, Cadastral Engineer, resurveyed a portion of the north boundary subdivisional lines.
The retracement data were thoroughly verified and only the true line data is given herein. Only those lines bounding or crossing public lands were blazed.
The directions of the lines were determined by direct solar observation, carried forward by sustained angulation, and refer to the true meridian.
An analysis of the unadjusted field data assured a closure not exceeding +/-4000 in error. The bearings and distances were then adjusted by the least squares adjustment method using a computer program that incorporates the squares adjustment routine. The adjusted bearing and distance are reported to the nearest second and 0.01 foot.
The geographic position shown herein was determined from a direct tie to a temporary point for which a position had been determined utilizing a dual frequency, carrier phase GPS receiver, to an accuracy level of 0.20 meters or better, relative to the National Spatial Reference System, using the National Geodetic Survey On-line Positioning User Service (OPUS).
Each new bearing tree has a 2 1/2 inch x 1/4 inch magnetic nail (Mag Nail) driven at the base on right side center, unless otherwise noted in the corner description.

This retracement was executed by Daniel N. Patterson, Cadastral Surveyor, beginning April 2, 2007 and completed April 9, 2007 in accordance with the application set forth in the Special Instructions dated March 16, 2007, approved March 21, 2007, and Assignment Instructions dated March 21, 2007, under Group Number 2300, Oregon, Administrative File Number 0701. He was assisted by Lowell H. Pearson and Daniel B. Bliss, Surveying Technicians, and Matthew H. Gains, Laborer.

The retracement represented by this plat, having been correctly executed in accordance with the requirements of law and the regulations of this Bureau, is hereby accepted.

For the Director
John P. Ramworth, Acting
Chief Cadastral Surveyor of Oregon

UNITED STATES DEPARTMENT OF THE INTERIOR
BUREAU OF LAND MANAGEMENT
Portland, Oregon

APR 16 2011
Date

(A) The 1/4 sec. cor. of secs. 21 and 28, monumented with an iron post, 1 in. diam., firmly set, projecting 2 ins. above ground, with brass cap mkd.

S 21
1/4
S 28
1950

from which the remains of an original bearing tree

A decayed hemlock stump, size indeterminate, bears S. 35° W., 10.6 ft. dist., with scribe marks BT visible on partially healed blaze.

and the remains of bearing trees mkd. by Lylie in 1950

A decayed hemlock stump, size indeterminate, bears S. 1 3/4° W., 29.0 ft. dist., with no marks visible.

A decayed hemlock stump, size indeterminate, bears N. 30 1/2° W., 19.8 ft. dist., with no marks visible.

and new bearing trees

A hemlock, 6 ins. diam., bears N. 33° E., 7.1 ft. dist., mkd. 1/4 S21 BT.

A hemlock, 11 ins. diam., bears S. 29 3/4° E., 8.1 ft. dist., mkd. 1/4 S18 BT.

The cor. of secs. 20, 21, 28, and 29, monumented with an iron post, 2 ins. diam., firmly set, projecting 6 ins. above ground, with brass cap mkd.

T 20 S. R. 6 W.
S 20 | S 21
S 29 | S 28
1950

from which the remains of a bearing tree mkd. by Lylie in 1950

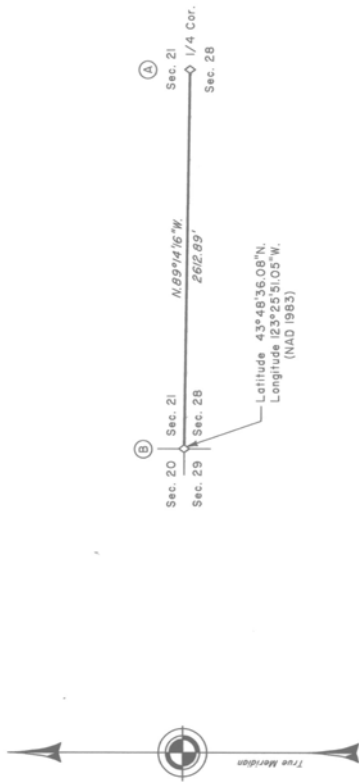
A fir, 26 ins. diam., bears S. 34° E., 25.1 ft. dist., with a healed blaze.

and bearing trees mkd. by Daniel W. Baker, Oregon Professional Land Surveyor No. 1978; in 1999, recorded in the Lane County Surveyors Office, C.S. File No. 34998

A fir, 16 ins. diam., bears N. 80 1/2° E., 15.1 ft. dist., with a healed blaze.

A fir, 12 ins. diam., bears S. 50 3/4° W., 9.5 ft. dist., with a healed blaze.

A fir, 13 ins. diam., bears N. 40 1/4° W., 5.3 ft. dist., with a healed blaze.



I, Daniel N. Patterson, Cadastral Surveyor, HEREBY CERTIFY upon honor, that in pursuance of Special Instructions bearing date of the 16th day of March 2007, I have retraced a portion of the subdivisional lines, Township 20 South, Range 6 West, of the Willamette Meridian, in the State of Oregon. Said retracement has been made in strict conformity with said Special Instructions, the Manual of Instructions for the Survey of the Public Lands of the United States, 1973, and in specific manner described on this plat.

Daniel N. Patterson
Cadastral Surveyor

4-01-11
Date

