

FILED  
Date: 5/17/2011 By: JC  
This survey consists of:  
Map: T29S R6W 2011  
Narrative: VOL 56  
Corner Rpt: PGS 22275-76

DOUGLAS COUNTY  
SURVEYOR

# TOWNSHIP 29 SOUTH, RANGE 6 WEST, OF THE WILLAMETTE MERIDIAN, OREGON

SHEET 1 OF 2

## RETRACEMENT

This plat represents the entire record of the retracement of a portion of the subdivision lines and subdivision-of-section lines of section 31, T. 29 S., R. 6 W., Willamette Meridian, Oregon and designed to restore the corners in their true original locations according to the best available evidence.

A history of surveys pertaining to this retracement is as follows:

In 1878, H. G. Hurlburt, U.S. Deputy Surveyor, surveyed a portion of the subdivision lines.

In 1905, Fred Mensch, U.S. Deputy Surveyor, surveyed the remainder of the subdivision lines.

In 1958-59, Hans W. Thielsen, and C. Albert White, Cadastral Surveyors, resurveyed a portion of the south boundary and subdivisional lines.

In 1980, Wayne L. Rogers, Cadastral Surveyor, resurveyed a portion of the south and west boundaries and subdivisional lines, and subdivided section 31.

The direction of the lines are based on the true meridian as determined by a combination of direct solar observations and Global Positioning System (GPS) measurements.

The retracement data were thoroughly verified and only the true line data are given hereon. Only those lines bounding or crossing public land were blazed.

An analysis of the unadjusted field data assured a closure not exceeding 1:4000 in error. Measured distances and directions have been adjusted by computer software that incorporates a least squares adjustment routine. The adjusted bearings and distances are reported to the nearest second and 0.01 foot.

The lottings and areas are as shown on the plat approved June 29, 1906.

The geodetic position shown hereon for the cor. of secs. 29, 30, 31, and 32, was determined by direct occupation utilizing dual frequency, carrier phase GPS receivers relative to the National Spatial Reference System.

The geodetic position shown hereon for the center E 1/16 section corner of sec. 31 was determined by a tie from a temporary control point, established utilizing dual frequency, carrier phase GPS receivers relative to the National Spatial Reference System.

Each new bearing tree has a 2 1/2 inch x 1/4 inch magnetic nail (Mag Nail) driven at the base on right side center, unless otherwise noted in the corner description.

This survey was executed by Kenneth W. Saveland, Cadastral Surveyor, beginning August 31, 2009, and completed September 9, 2009, in accordance with the specification set forth in the Manual of Surveying Instructions, 1973; pursuant to Special Instructions dated March 16, 2007, approved March 21, 2007, which provided for the survey included under Group Number 2300, Oregon, Administrative File Number 0904, and Assignment Instructions dated August 25, 2009. He was assisted by Robert NMI Durning, Joel R. Hertzberg, Thomas A. Hollamon, Survey Technicians.

UNITED STATES DEPARTMENT OF THE INTERIOR  
BUREAU OF LAND MANAGEMENT

Portland, Oregon

The retracement represented by this plat, having been correctly executed in accordance with the requirements of law and the regulations of this Bureau, is hereby accepted.

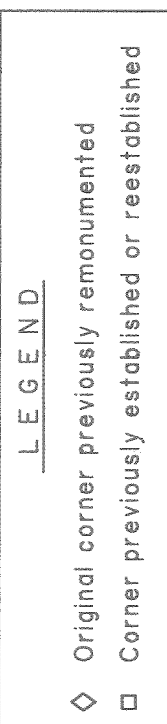
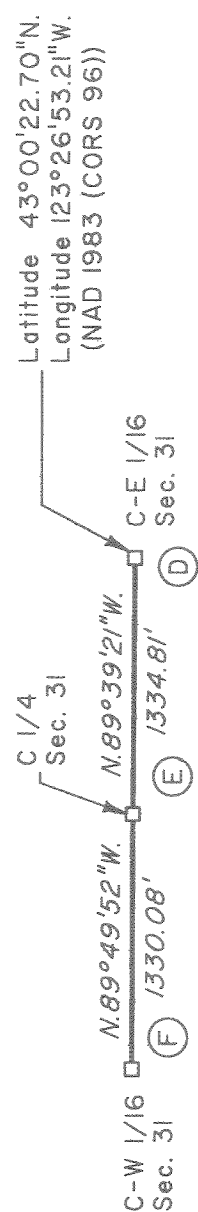
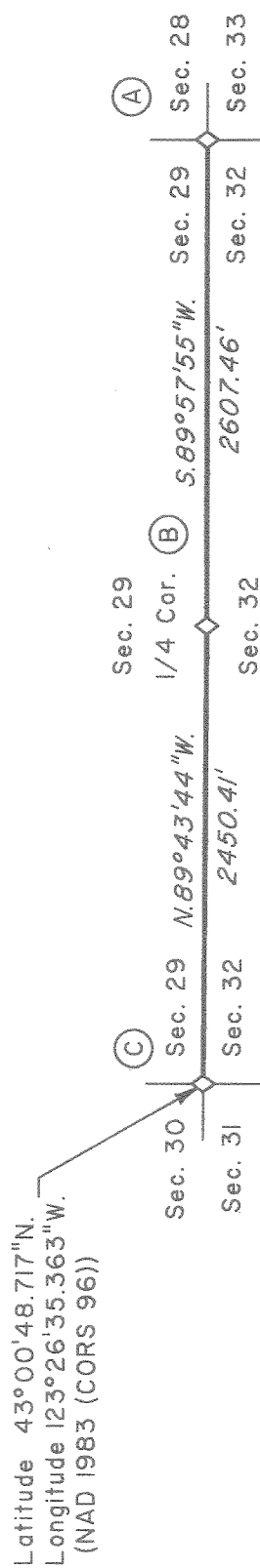
For the Director

*John P. Janoverth, Acting*

Chief Cadastral Surveyor of Oregon

*March 2, 2011*

Date



I, Kenneth W. Saveland, Cadastral Surveyor, HEREBY CERTIFY upon honor, that in pursuance of Special Instructions bearing date of the 16th day of March, 2007, I have retraced a portion of the subdivisional lines and subdivision-of-section lines of section 31, Township 29 South, Range 6 West, Willamette Meridian, Oregon, which is represented upon this plat as having been executed by me and under my direction. Said retracement has been made in strict conformity with said Special Instructions, the Manual of Instructions for the Survey of the Public Lands of the United States, 1973, and in specific manner described upon this plat.

*Kenneth W. Saveland*  
Cadastral Surveyor

*February 22, 2011*  
Date



Scale in Feet

