

Date: 4/25/2011 By: JC
 This survey consists of:
 Map: T30S R3W 2011
 Narrative: VOL 56
 Corner Rpt: PAGE 22268
 DOUGLAS COUNTY
 SURVEYOR

TOWNSHIP 30 SOUTH, RANGE 3 WEST, OF THE WILLAMETTE MERIDIAN, OREGON

RETRACEMENT

A history of surveys is contained in the field notes.

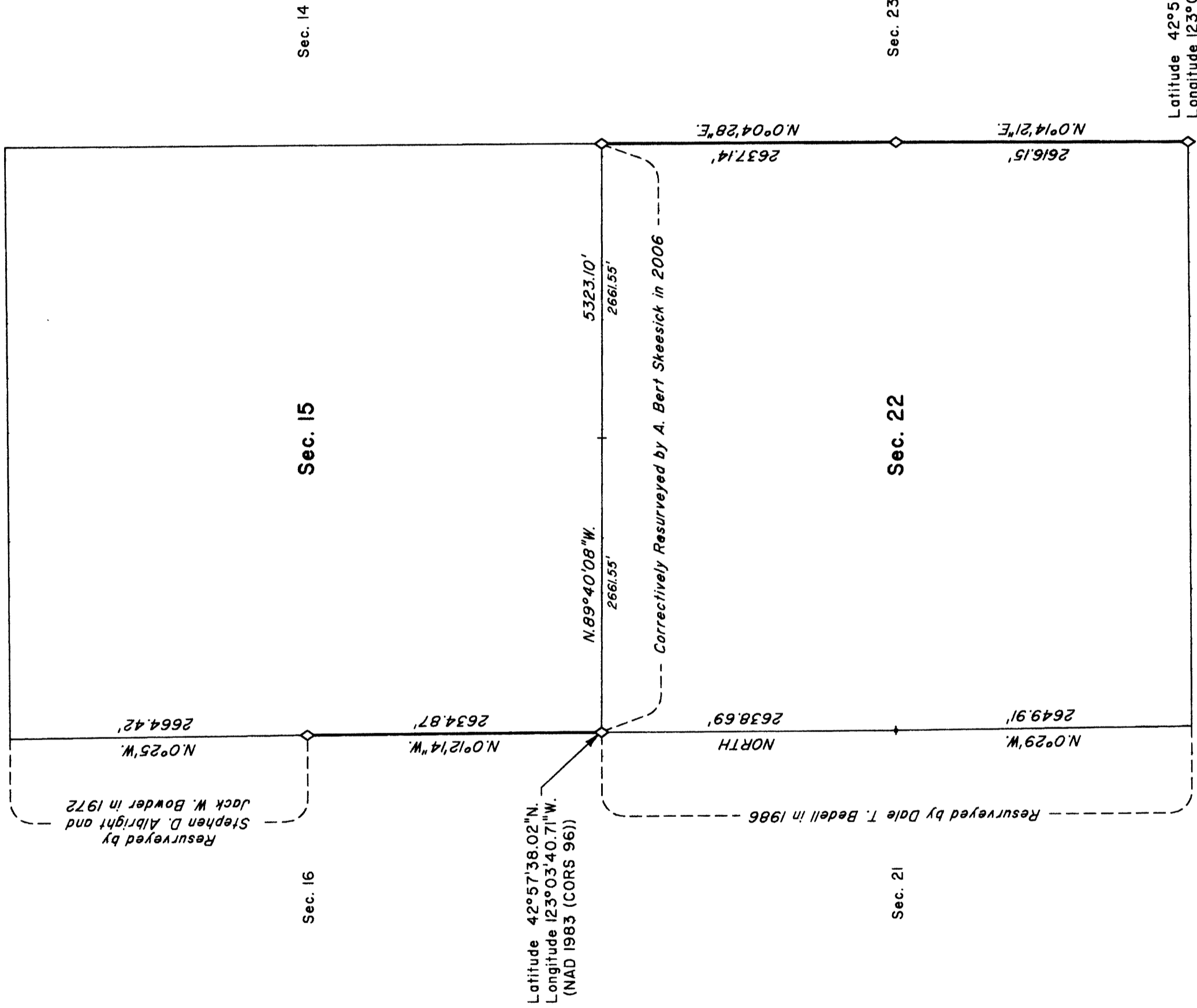
This plat represents the retracement of a portion of the subdivision lines, T. 30 S., R. 3 W., Willamette Meridian, Oregon.

The survey was performed utilizing both conventional (directly measured angles and distances) and NAVSTAR Global Positioning System (GPS) satellite techniques. The GPS measurements utilized dual frequency, carrier phase GPS receivers. The baselines were computed in and adjusted using a least squares adjustment routine. Conventionally measured distances and directions have been adjusted using a least squares adjustment routine. The adjusted bearings and distances are reported to the nearest second and 0.01 foot. Only those lines bounding or crossing public lands were blazed.

The lotings and areas are as shown on the plat approved June 29, 1895.

This survey was executed by Kenneth W. Saveland, Cadastral Surveyor, beginning May 14, 2008 and completed May 29, 2008, pursuant to Special Instructions dated March 16, 2007, approved March 21, 2007, under Group Number 2300, Oregon, Administrative File Number 0803.

ALL OF THE AVAILABLE INFORMATION IS ON THIS PLAT
 THERE ARE NO LINE NOTES TO GO WITH THIS RETRACEMENT -



LEGEND
 ◇ Original corner previously remonumented

UNITED STATES DEPARTMENT OF THE INTERIOR
 BUREAU OF LAND MANAGEMENT

Portland, Oregon

This plat is strictly conformable to the approved field notes, and the survey, having been correctly executed in accordance with the requirements of law and the regulations of this Bureau, is hereby accepted.

For the Director

Maureen M. Hanks

Chief Cadastral Surveyor of Oregon

February 11, 2011
 Date

THIS BLM RESURVEY CONSISTS OF THIS MAP ONLY
 THERE ARE NO SEPARATE FIELD NOTES