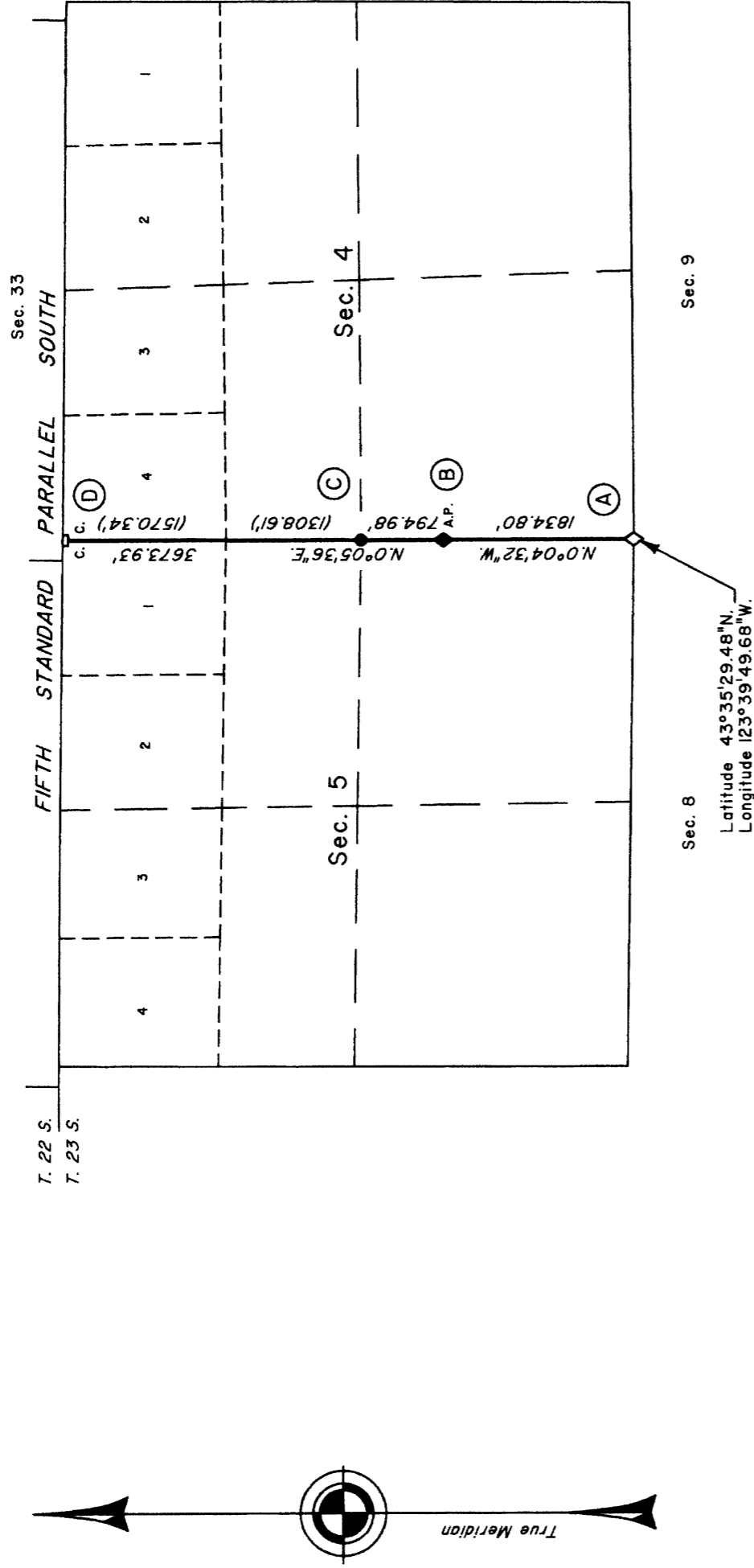


TOWNSHIP 23 SOUTH, RANGE 8 WEST, OF THE WILLAMETTE MERIDIAN, OREGON

DEPENDENT RESURVEY



LEGEND

- ◇ Original corner previously remonumented
- ◆ Original corner remonumented this survey
- Corner previously reestablished
- Corner reestablished this survey

(A) The cor. of secs. 4, 5, 8, and 9, perpetuated by Vernon Tracy, Douglas County Surveyor, in 1966, filed in the Douglas County Surveyor's Office under C.S. file No. 54/12, rehabilitated by L. Monrean, Deputy County Surveyor, in 1979, filed in the Douglas County Surveyor's Office under C.S. file No. 59/30, remonumented by Gregory Quibell, Deputy County Surveyor, in 1981, filed in the Douglas County Surveyor's Office under C.S. file No. 61/29, and rehabilitated by Ronald L. Rice, Professional Land Surveyor No. 54633, in 2008, filed in the Douglas County Surveyor's Office under C.S. file No. 65/63-26; monumented with an iron pipe, 1 1/2 ins. diam., firmly set, in a mound of stone, 3 ft. base, 12 ins. high, with a brass cap mkd.

(B) The remains of an original line tree on the line between secs. 4 and 5; monumented with a sawed fir stump, 74 ins. dia. 6 ft. high, mkd. with 2 notches on the N. side and 2 rotten notches on the S. side, and red paint under the moss on the stump, and is accepted as an angle point on the line bet. secs. 4 and 5.
At the corner point
Drive an aluminum rod, 36 ins. long, 1/2 in. diam., 36 ins. in the center of the stump, with aluminum cap mkd.

from which
A fir, 7 ins. diam., bears N. 87° E., 20.6 ft. dist., mkd. AP S4 BT.
A maple, 11 ins. diam., bears S. 69° W., 13.6 ft. dist., mkd. AP S5 BT.

(C) Point for the 1/4 sec. cor. of secs. 4 and 5, at proportionate distance between the original line tree bet. secs. 4 and 5 and the closing cor. of secs. 4 and 5 on the N. bdy. of the Tp.; there is no remaining evidence of the original corner.
Set a stainless steel post, 28 ins. long, 2 1/2 ins. diam., 22 ins. in the ground, with brass cap mkd.

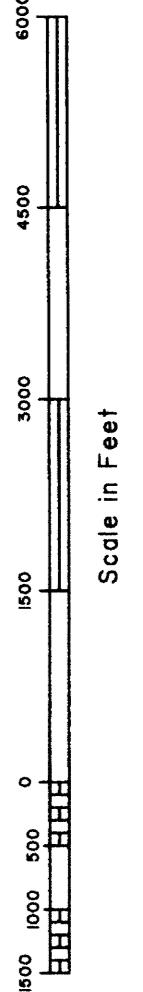
from which new bearing trees
A fir, 11 ins. diam., bears S. 50° E., 18.4 ft. dist., mkd. T23S R8W S4 CC BT.
A fir, 8 ins. diam., bears S. 43° W., 10.3 ft. dist., mkd. X BT.

The lottings and areas are as shown on the plat approved June 27, 1895
Each new bearing trees have a 2 1/2 inch x 1/4 inch magnetic nail (Mag Nail) driven at the base on right side center, unless otherwise noted in the corner description.
The geodetic position shown hereon were determined by a tie from a temporary GPS control points, established utilizing dual frequency, carrier phase GPS receivers, and processed using the National Geodetic Survey's Online Positioning User Service (OPUS).

UNITED STATES DEPARTMENT OF THE INTERIOR
BUREAU OF LAND MANAGEMENT
Portland, Oregon

This plat, which constitutes the entire record of this survey, having been correctly executed in accordance with the requirements of law and the regulations of this Bureau, is hereby accepted.

For the Director
John P. Remann
Chief Cadastral Surveyor of Oregon



January 25, 2011
Date