

Date: 4/25/2011 By: JC  
This survey consists of:  
Map: T22S R07W - 2011  
Narrative: VOL 56  
Corner Rpt: PAGE 22266

DOUGLAS COUNTY  
SURVEYOR

This plat represents the entire record of the subdivision of section 6, T. 22 S., R. 7 W., Willamette Meridian, Oregon.

A history of surveys pertaining to this survey is as follows:

In 1855, Harvey Gordon and Charles T. Gardner, U.S. Deputy Surveyors, surveyed the north and west boundaries of the township and a portion of the subdivisional lines, as shown on the official plat of survey approved February 20, 1856.

In 1871, William H. Byars, U.S. Deputy surveyor, surveyed a portion of the subdivisional lines, as shown on the official plat of survey approved April 26, 1872.

In 1964, Floyd A. Brooks and James E. Jelley, Cadastral Surveyors, resurveyed a portion of the south boundary of T. 21 S., R. 7 W., as shown on the official plat of survey of T. 21 S., R. 7 W., accepted August 20, 1965.

In 1968, Peter A. Peterson, Cadastral Surveyor, resurveyed a portion of the west boundary and subdivisional lines, and subdivided section 7, as shown on the official plat of survey accepted December 30, 1970.

This survey was executed by Michael O. Jones, Cadastral Surveyor, beginning June 9, 2009, and completed August 4, 2009, in accordance with the specifications set forth in the Manual of Surveying Instructions, 1973, pursuant to Special Instructions dated May 27, 2009, approved May 28, 2009, and Assignment Instructions dated May 28, 2009 for Group Number 2276, Oregon. He was assisted by Keith G. Felker, Surveying Technician, Joseph M. Mannix, Land Surveyor Trainee.

Preliminary to the survey, the lines of the prior surveys were retraced and a search was made for all corners and other calls of record. The retracement data were thoroughly verified and only the true line data is given hereon. The direction of the lines refer to the true meridian as determined by Global Positioning System (GPS) measurements and by direct solar observations.

An analysis of the unadjusted field data assured a closure not exceeding 1:4000 in error. Measured distances and directions have been adjusted by computer software that incorporated a least squares adjustment routine. The adjusted bearings and distances are reported to the nearest second and 0.01 foot.

The lottings and areas are as shown on the plat approved April 26, 1872.

Each new bearing trees have a 2 1/2 inch x 1/4 inch magnetic nail (Mag Nail) driven at the base on right side center, unless otherwise noted in the corner description.

The geodetic position shown hereon was determined by a tie from temporary GPS control points, established utilizing dual frequency, carrier phase GPS receivers, and processed using the National Geodetic Survey's Online Positioning User Service (OPUS).

UNITED STATES DEPARTMENT OF THE INTERIOR  
BUREAU OF LAND MANAGEMENT

Portland, Oregon

This plat, which constitutes the entire record of this survey, having been correctly executed in accordance with the requirements of law and the regulations of this Bureau, is hereby accepted.

For the Director

*John P. Ransworth, Acting*

Chief Cadastral Surveyor of Oregon

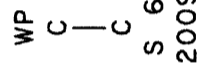
*John P. Ransworth* 4/25/2011  
Date

# TOWNSHIP 22 SOUTH, RANGE 7 WEST, OF THE WILLAMETTE MERIDIAN, OREGON

## SUBDIVISION OF SECTION 6

(B) Point selected for a witness point on the N. and S. center line of sec. 6.

Set a stainless steel post, 28 ins. long, 2 1/2 ins. diam., 22 ins. in the ground, with brass cap mkd.



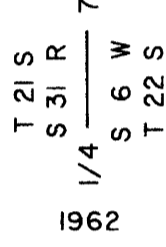
from which

A fir, 12 ins. diam., bears N. 70° E., 10.7 ft. dist., mkd. WP S6 BT.

A fir, 12 ins. diam., bears N. 28° W., 8.5 ft. dist., mkd. X BT.

Deposit a magnet in a white plastic case at the base of the stainless steel post.

(C) The 1/4 sec. cor. of secs. 6 and 31 on the N. bdy. of the Tp., perpetuated by Milo E. Godfrey, Douglas County Surveyor, in 1962, filed in the Douglas County Surveyor's Office under CS File No. 52/14, and accepted by Brooks and Jelley in 1964; monumented with an iron pipe, 1 1/2 ins. diam., firmly set, projecting 11 ins. above ground, with a brass cap mkd.



from which the remains of the original bearing trees

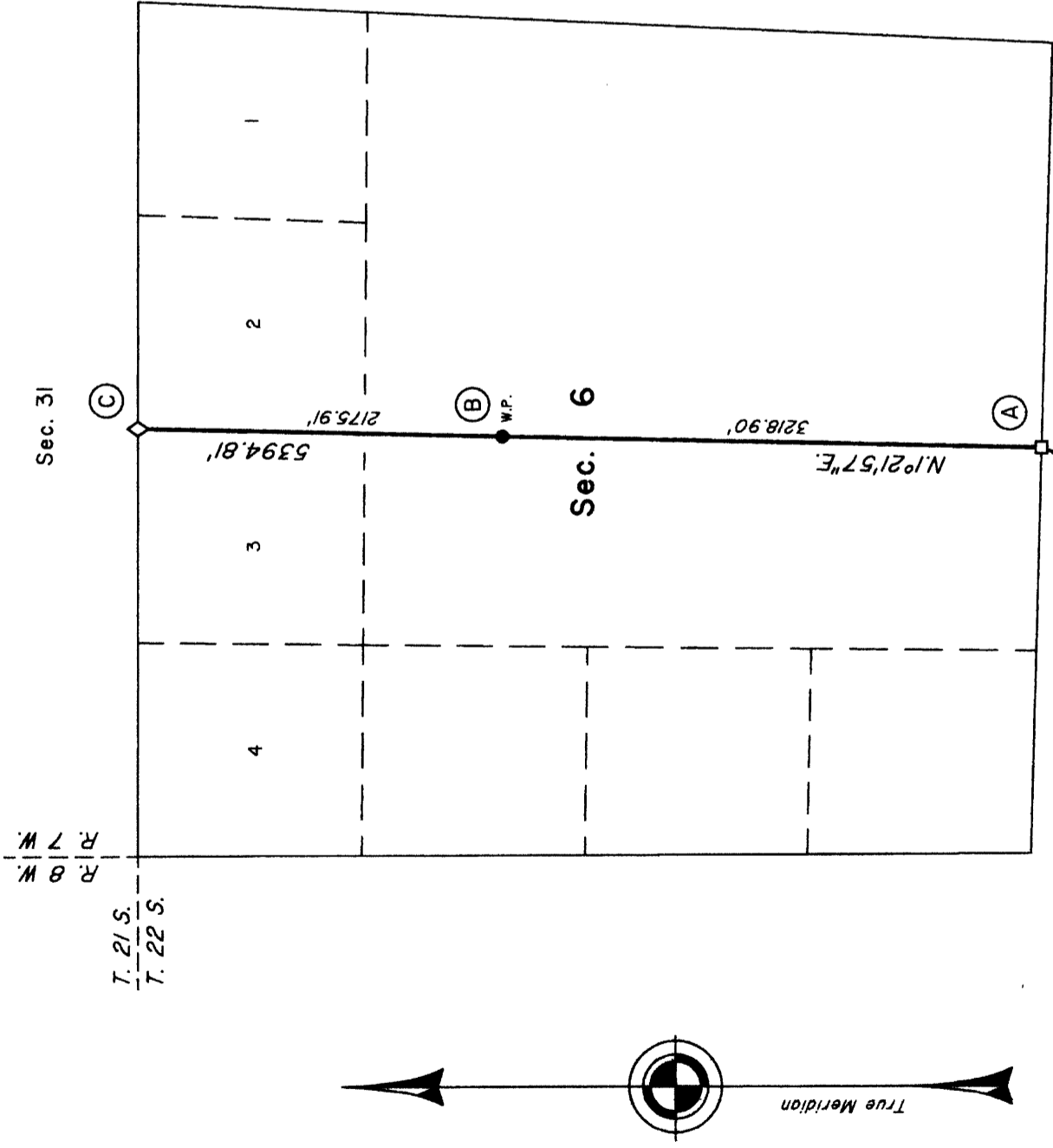
A hollow burnt fir snag, 25 ins. diam., bears S. 34° W., 42.2 ft. dist., no marks visible. (Record, S. 37° W.)

A fir, 47 ins. diam., bears N. 49° W., 31.7 ft. dist., with an X in bark at head height and a hack in bark at waist height.

and bearing trees by Godfrey and reported by Brooks and Jelley

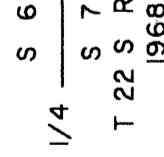
A fir, 31 ins. diam., bears N. 75° E., 10.2 ft. dist., with a healed blaze.

A fir, 26 ins. diam., bears South, 31.7 ft. dist., no marks visible.



Latitude 43°40'42.75"N.  
Longitude 123°34'27.86"W.  
(NAD 1983 (CORS 96))

(A) The 1/4 sec. cor. of secs. 6 and 7, reestablished by Wilford N. Haines, Professional Land Surveyor No. 239, in 1963, filed in the Douglas County Surveyor's Office under Map File No. M27-34, and remonumented by Peterson in 1968, and perpetuated by Tony Hostetter, Professional Land Surveyor No. 1975, in 2005, filed in the Douglas County Surveyor's Office under Map File No. M147-75; monumented with an iron post, 2 1/2 ins. diam., firmly set, projecting 4 ins. above ground, with a brass cap mkd.



from which a bearing tree mkd. by Haines, PLS No. 239 and reported by Peterson

A fir, 24 ins. diam., bears S. 21° E., 35.6 ft. dist., with a healed blaze.

a bearing tree mkd. by Peterson

A fir, 24 ins. diam., bears N. 16° W., 33.0 ft. dist., with a healed blaze.

and bearing trees mkd. by Hostetter PLS No. 1975

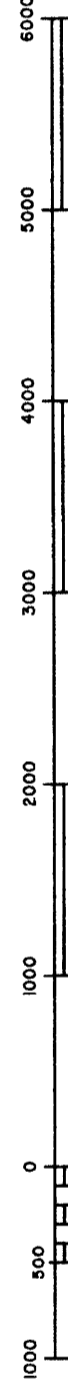
A hemlock, 13 ins. diam., bears N. 35° E., 26.2 ft. dist., with scribe marks S6 1/4 BT visible on partially healed blaze.

A fir, 21 ins. diam., bears S. 50° E., 19.1 ft. dist., with illegible scribe marks visible on partially healed blaze.

A steel fence post is alongside the cor.

LEGEND  
◇ Original corner previously remonumented  
□ Corner previously reestablished  
● Corner established this survey

*MO* 1-18-2011  
Cadastral Surveyor Date



Scale in Feet