

FILED
 Date: 4/25/2011 By: JC
 This survey consists of:
 Map: 121-8 2011-01; 2011-02; 2011-03
 Narrative: VOL 56
 Corner Rpt: 22263-22265

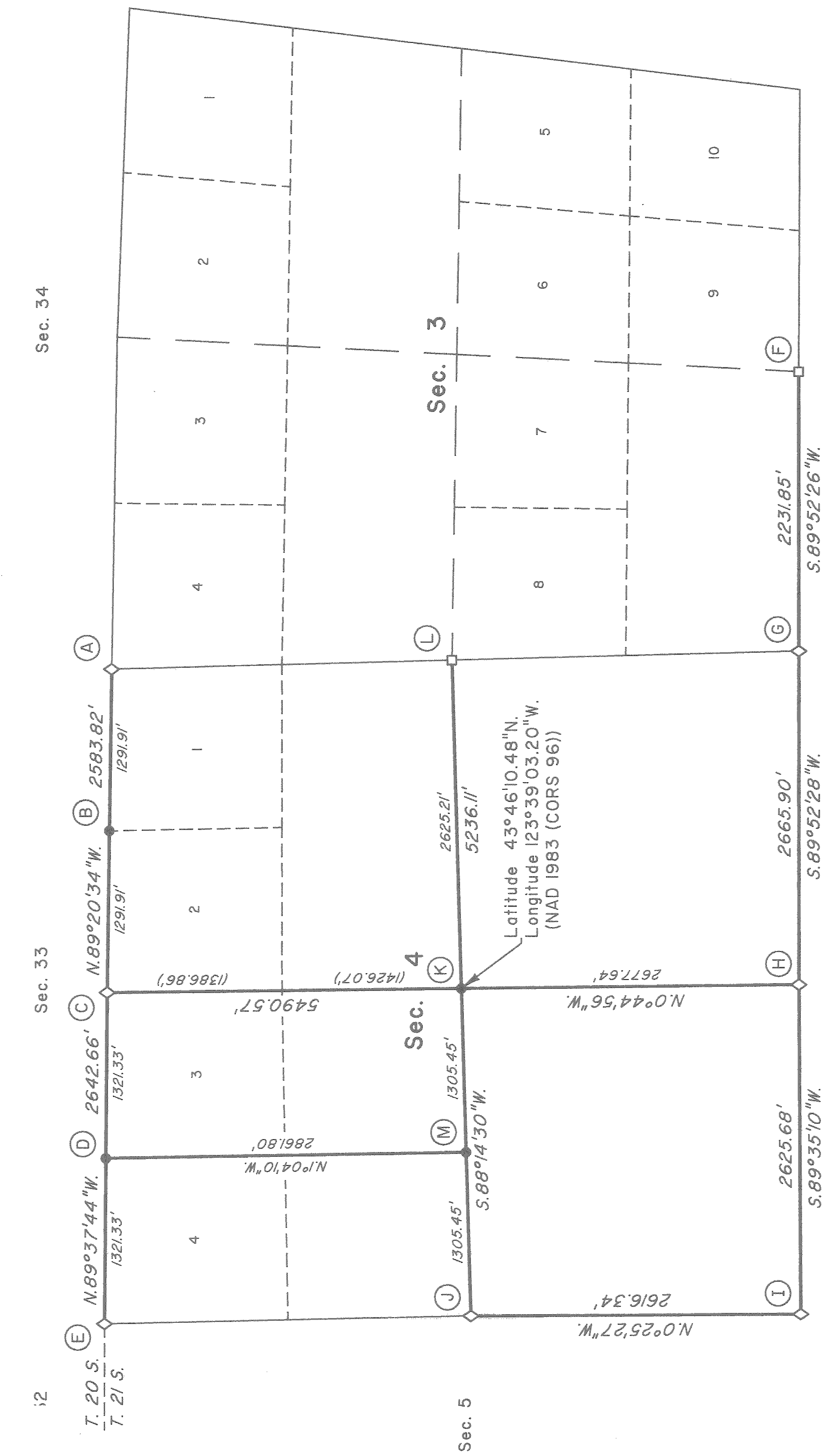
TOWNSHIP 21 SOUTH, RANGE 8 WEST, OF THE WILLAMETTE MERIDIAN, OREGON

SHEET 1 OF 3

DEPENDENT RESURVEY AND SUBDIVISION OF SECTION 4

DOUGLAS COUNTY
 SURVEYOR

12



Sec. 8

Sec. 9

Sec. 10

- LEGEND
- ◊ Original corner previously remonumented
 - Corner previously established or reestablished
 - Corner established this survey

The history of surveys pertaining to this survey is as follows:

In 1883, William P. Wright, U.S. Deputy Surveyor, surveyed the north boundary of the township and subdivisional lines, as shown on the official plat of survey approved August 4, 1884.

In 1945, Norman D. Price, Cadastral Engineer, and George F. Rigby, Associate Cadastral Engineer, resurveyed a portion of the north boundary of the township and subdivisional lines, as shown on the official plat of survey accepted March 10, 1947.

In 1950, Thomas A. Tillman, Cadastral Engineer, resurveyed a portion of the north boundary of the township, as shown on the official plat of survey of Township 20 South, Range 8 West, accepted February 7, 1952.

In 1952-54, Marvin J. Lytle, Palmer Norseth, Thomas A. Tillman, Raymond M. Bicknell, Joseph S. Gawron, and Hans W. Thielsen, Cadastral Engineers, resurveyed a portion of the subdivisional lines, as shown on the official plat of survey accepted April 14, 1960.

In 1967, William W. Glenn, C. Albert White, and James E. Jolley, Cadastral Surveyors, remonumented certain original corner points without survey on the north boundary of the township, as shown in the official field notes of Township 20 South, Range 8 West, approved March 3, 1977.

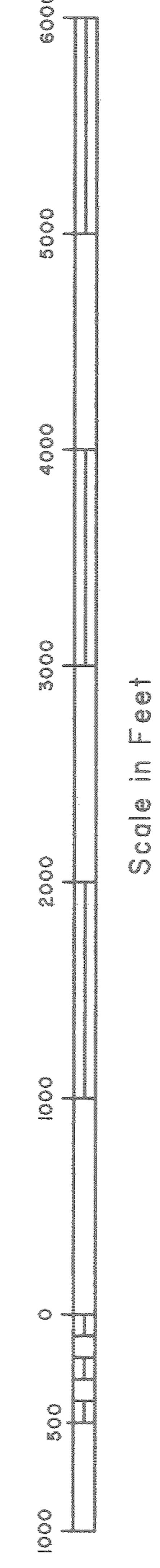
In 1999-2000, Aaron M. Graham, Cadastral Surveyor, remonumented and rehabilitated certain corner points without survey, as shown in the official field notes approved February 13, 2003.

In 2005, Aaron M. Graham, Cadastral Surveyor, rehabilitated certain corner points on the north boundary of the township without survey, as shown in the official field notes of Township 20 South, Range 8 West, approved January 30, 2009.

Cadastral Surveyor
 Date: 2-23-11

The following surveys filed in the Douglas County Surveyor's Offices are referred to in the subsequent corner descriptions and are referenced by the surveyor's last name and year.

Date	Surveyor and PLS/PE No.	County Survey No.
1968	Ronald E. Stuntzner, PE 6245	CS File No. 55/99 (GCDB No. 400700)
1981	Stephen J. Flause, Deputy Douglas County Surveyor	CS File No. 61/19 (GCDB No. 340600)
1984	Daniel W. Baker, PLS 1978	Map No. 97-51 and CS File No. 58/269-3K, 3M, 3N



This plat represents the entire record of the dependent resurvey of a portion of the north boundary and subdivisional lines, T. 21 S., R. 8 W., Willamette Meridian, Oregon, designed to restore the corners in their true original locations according to the best available evidence, and the subdivision of section 4.

Preliminary to the resurvey, the lines of the prior surveys were retraced and a search was made for all corners and other calls of record. The retracement data were thoroughly verified and only the true line field data are given hereon. Only those lines bounding or crossing public land were blazed.

The directions of the lines are based on the true meridian as determined by direct solar observation.

The survey was performed using a combination of GPS satellite techniques and terrestrial measurements. The GPS measurements utilized dual frequency carrier phase receivers and were executed in accordance with the 'Standards and Guidelines for Cadastral Surveys Using Global Positioning System Methods', dated May of 2001, published by the U.S.D.A. Forest Service and U.S.D.I. Bureau of Land Management.

An analysis of the unadjusted field data assured a closure not exceeding 1:4000 in error. The static GPS measurements and the terrestrial distances and directions have been adjusted using computer software that incorporates a least squares adjustment routine. The adjusted bearings and distances are reported to the nearest second and 0.01 foot.

The geographic position shown hereon was determined by ties from temporary Global Positioning System (GPS) control points, established utilizing dual frequency, carrier phase GPS receivers, and processed using the National Geodetic Survey's Online Positioning User Service (OPUS).

The official lottings and areas of federal interest lands are as shown on the plat approved August 4, 1884.

Each new bearing tree has a 2 1/2 inch x 1/4 inch magnetic nail (Mag Nail) driven at the base on right side center.

The survey was executed by Edith M. Forkner, Cadastral Surveyor, beginning August 24, 2009, and completed February 9, 2010, in accordance with the specifications set forth in the Manual of Surveying Instructions, 1973; pursuant to Special Instructions dated July 29, 2009, approved August 10, 2009, which provided for the survey included under Group No. 2285, Oregon, and Assignment Instructions dated August 10, 2009. She was assisted by Keith G. Feiker, Surveying Technician, and Jason H. Blum and Josh A. Varland, Laborers.

UNITED STATES DEPARTMENT OF THE INTERIOR
 BUREAU OF LAND MANAGEMENT

Portland, Oregon

This plat, which constitutes the entire record of this survey, having been correctly executed in accordance with the requirements of law and the regulations of this Bureau, is hereby accepted.

For the Director

Mary J. M. Haidel

Chief Cadastral Surveyor of Oregon

February 23, 2011

Date

THERE ARE NO LINE NOTES TO GO WITH THIS RETRACEMENT - ALL OF THE AVAILABLE INFORMATION IN ON THIS PLAT

OFFICIALLY FILED: 4/13/2011