

**UNITED STATES
DEPARTMENT OF THE INTERIOR
BUREAU OF LAND MANAGEMENT**

FIELD NOTES

OF THE

RETRACEMENT

OF

A PORTION OF THE SUBDIVISIONAL LINES

TOWNSHIP 31 SOUTH, RANGE 6 WEST,

OF THE WILLAMETTE MERIDIAN,

IN THE STATE OF OREGON.

EXECUTED BY

Kenneth W. Saveland, Cadastral Surveyor

Under Special Instructions dated March 16, 2007, approved March 21, 2007,
which provided for the surveys included under Group No. 2300,
and Assignment Instructions dated March 25, 2008.

Survey commenced March 31, 2008

Survey completed April 10, 2008

T. 31 S., R. 6 W., Willamette Meridian, Oregon

The following field notes are those of the retracement of a portion of the subdivisional lines in Township 31 South, Range 6 West, of the Willamette Meridian, Oregon.

The history of surveys pertaining to this survey is as follows:

In 1882, William H. Byars, U.S. Deputy Surveyor, surveyed the subdivisional lines.

In 1980-81, James E. Jelley and Wayne L. Rogers, Cadastral Surveyors, dependently resurveyed portions of the north boundary and subdivisional lines, and subdivided section 1.

The survey was executed in accordance with the specifications set forth in the Manual of Surveying Instructions, 1973, and the Special Instructions dated March 16, 2007, for Group No. 2300, Oregon.

Preliminary to the resurvey, the lines of the prior surveys were retraced and search was made for all corners and other calls of record. Identified corners were remonumented in their original positions. The retracement data were thoroughly verified and only the corner description field notes are given herein. Only those lines bounding public lands were blazed.

The direction of the lines are based on the true meridian as determined by a combination of direct solar observations and Global Positioning System (GPS) measurements.

The survey was performed using a combination of GPS satellite techniques and terrestrial measurements. The GPS measurements utilized dual frequency carrier phase receivers and were executed in accordance with the 'Standards and Guidelines for Cadastral Surveys Using Global Positioning System Methods', dated May of 2001, published by the U.S.D.A. Forest Service and U.S.D.I. Bureau of Land Management.

The static GPS measurements have been adjusted using computer software that incorporates a least squares adjustment routine. The maximum GPS Cadastral Measurement error ellipse at 95% confidence level is 0.04 feet based on local accuracy standards. Terrestrial distances and directions have been adjusted using computer software that incorporates a least squares adjustment routine. The adjusted bearings and distances are reported to the nearest second and 0.01 foot.

Each new bearing tree has a 2 1/2 inch x 1/4 inch magnetic nail (Mag Nail) driven at the base on right side center, unless otherwise noted in the corner description.

The geographic position (NAD 1983 (CORS 96)) of the following corners, as determined by a tie from a temporary GPS control point, established utilizing dual frequency, carrier phase GPS receivers, using for control National Spatial Reference System Continuously Operating Reference Station (CORS) CAPE BLANCO CORS ARP (CABL), and National Cooperative CORS Network Station ROSEBURG COOP CORS ARP (DCSO), is as follows:

T. 31 S., R. 6 W., Willamette Meridian, Oregon

The corner of sections 15, 16, 21, and 22.

Latitude: 42° 52' 10.25" N. Longitude: 123° 24' 26.03" W.

The corner of sections 14, 15, 22, and 23.

Latitude: 42° 52' 11.64" N. Longitude: 123° 23' 14.46" W.

**Retracement of a Portion of the Subdivisional Lines,
T. 31 S., R. 6 W., Willamette Meridian, Oregon**

The cor. of secs. 14, 15, 22, and 23, monumented with an iron post, 1 1/4 ins. diam., firmly set, projecting 13 ins. above the ground, with brass cap mkd.

COUNTY SURVEYORS OFFICE

T31S		
S15	S14	R
S22	S23	W
1963		

from which the remains of the original bearing trees

A fir, 45 ins. diam., bears N. 21° E., 16.5 ft. dist., with no marks visible.

A decayed fir stump, size indeterminate, bears S. 50° W., 5.3 ft. dist., with no marks visible.

A fir, 44 ins. diam., bears N. 72 3/4° W., 26.4 ft. dist., with no marks visible. (Record, N. 60° W.)

and bearing trees mkd. by James W. Byron, Deputy County Surveyor, in 1963, filed in the Douglas County Surveyor's Record of Government Corners Renewed, T. 31 S., R. 6 W., Point Identifier No. 500400, reported by Jelley and Rogers

A fir, 9 ins. diam., bears N. 2° E., 19.5 ft. dist., with no scribe marks visible on a partially healed blaze.

A fir, 18 ins. diam., bears S. 68° E., 12.5 ft. dist., with a healed double blaze.

A fir, 25 ins. diam., bears S. 19° W., 6.3 ft. dist., with a healed double blaze.

Corner is located on an E. slope, 65 ft. N. of a draw, drains N. 45° E.

**Retracement of a Portion of the Subdivisional Lines,
T. 31 S., R. 6 W., Willamette Meridian, Oregon**

The 1/4 sec. cor. of secs. 14 and 23, perpetuated by the Douglas County Surveyor's Office in 1966, filed in the Douglas County Surveyor's Record of Government Corners Renewed, T. 31 S., R 6 W., Point Identifier No. 540400, monumented with an iron post, 1 1/4 ins. diam., firmly set, projecting 15 ins. above the ground, with brass cap mkd.

COUNTY SURVEYORS OFFICE

T31S R6W

S14

1/4 ———●—————

S23

1966

from which the remains of the original bearing trees

A decayed hemlock stump, size indeterminate, bears S. 16° E., 13.9 ft. dist., with no marks visible.

A sawed, decayed fir stump, 52 ins. diam., bears N. 23° W., 15.2 ft. dist., with no marks visible.

and the remains of bearing trees mkd. by the Douglas County Surveyor's Office

A yew, 19 ins. diam., bears S. 28 1/4° E., 29.8 ft. dist., with scribe marks 1/4 S23 CS BT visible on a partially healed blaze.

A sawed fir stump, 25 ins. diam., bears N. 71° W., 32.7 ft. dist., with a healed blaze.

and a new bearing tree

A yew, 10 ins. diam., bears N. 83 1/2° E., 16.2 ft. dist., mkd. 1/4 S14 BT.

Corner is located on a spur, slopes N. 10° E.

From the corner, East, at:

25 ft. dist., ravine, drains N. 25° E.

From the corner, West, at:

50 ft. dist., creek, 5 ft. wide, course N. 45° W.

**Retracement of a Portion of the Subdivisional Lines,
T. 31 S., R. 6 W., Willamette Meridian, Oregon**

The cor. of secs. 15, 16, 21, and 22, monumented with the remains of the original corner tree, a decayed fir snag, 42 ins. diam., with axe marks on the W. face, from which the remains of the original bearing trees

A decayed fir snag, 47 ins. diam., bears S. 35° E., 44.2 ft. dist., with axe and saw marks visible on NW. face.

A decayed fir snag, 27 ins. diam., bears N. 57° W., 15.4 ft. dist., with axe and saw marks visible on SE. face.

and a bearing tree and witness cor. mkd. by the Douglas County Surveyor's Office in 1964, filed in the Douglas County Surveyor's Record of Government Corners Renewed, T. 31 S., R. 6 W., Point Identifier No. 400400, reported by Jelley and Rogers

A fir, 16 ins. diam., bears S. 19 1/4° W., 24.4 ft. dist., with a healed double blaze.

An iron post, 1 1/4 ins. diam., firmly set, projecting 5 ins. above the ground, bears West, 4.00 ft. dist., with brass cap mkd. COUNTY SURVEYORS OFFICE WC 4 FT. E. T31S R6W S15 S16 S21 S22 1964.

and remains of bearing trees mkd. by Bruce A. Shaner, Oregon Professional Land Surveyor No. 430, filed in the Douglas County Surveyor's Office, Map File No. RM3-32, reported by Jelley and Rogers

A fir, 14 ins. diam., bears N. 9 3/4° E., 16.5 ft. dist., with a healed blaze.

A fir snag, 8 ins. diam., bears S. 20 1/4° E., 7.9 ft. dist., with a healed blaze.

A fir, 16 ins. diam., bears N. 71° W., 7.3 ft. dist., with a healed blaze.

and new bearing trees

A fir, 11 ins. diam., bears S. 64 3/4° E., 22.8 ft. dist., mkd. T31S R6W S22 BT.

A fir, 12 ins. diam., bears S. 1° E., 9.5 ft. dist., mkd. X BT.

Corner is located on a N. slope, 75 ft. E. of a gravel road, 10 ft. wide, bears N. 45° W. and S. 30° E., in curve.

**Retracement of a Portion of the Subdivisional Lines,
T. 31 S., R. 6 W., Willamette Meridian, Oregon**

The 1/4 sec. cor. of secs. 15 and 16, perpetuated by Bruce A. Shaner, Oregon Professional Land Surveyor No. 430, in 1980, filed in the Douglas County Surveyor's Office, Map File No. RM 3-32, monumented with an iron post, 2 1/2 ins. diam., firmly set, projecting 5 ins. above the ground, with brass cap mkd.

T31S R6W W.M.
1/4 S
S16 • S15
R.L.S. 430 1980

from which the remains of the original bearing trees

A fir snag, 35 ins. diam., bears N. 20° E., 32.3 ft. dist., with no marks visible.

A fir, 29 ins. diam., bears S. 18° W., 19.8 ft. dist., with scribe marks 1/4S S16 BT visible on the bark.

and the remains of a bearing tree mkd. by Shaner

A fir snag, 30 ins. diam., bears S. 10 1/4° E., 28.1 ft. dist., with scribe marks 1/4S S15 BT visible on the bark.

and a new bearing tree

A fir, 7 ins. diam., bears N. 61 3/4° E., 12.7 ft. dist., mkd. 1/4 S15 BT.

Corner is located 50 ft. S. of a spur, slopes E.

TOWNSHIP 31 SOUTH, RANGE 6 WEST, OF THE WILLAMETTE MERIDIAN, OREGON RETRACEMENT

FILED
 Date: 7/20/2010 By: JC
 This survey consists of:
 Map: SIX LINE NOTES
 Narrative: VOL. 56
 Corner Rpt: PGS 22169-22175
 DOUGLAS COUNTY
 SURVEYOR

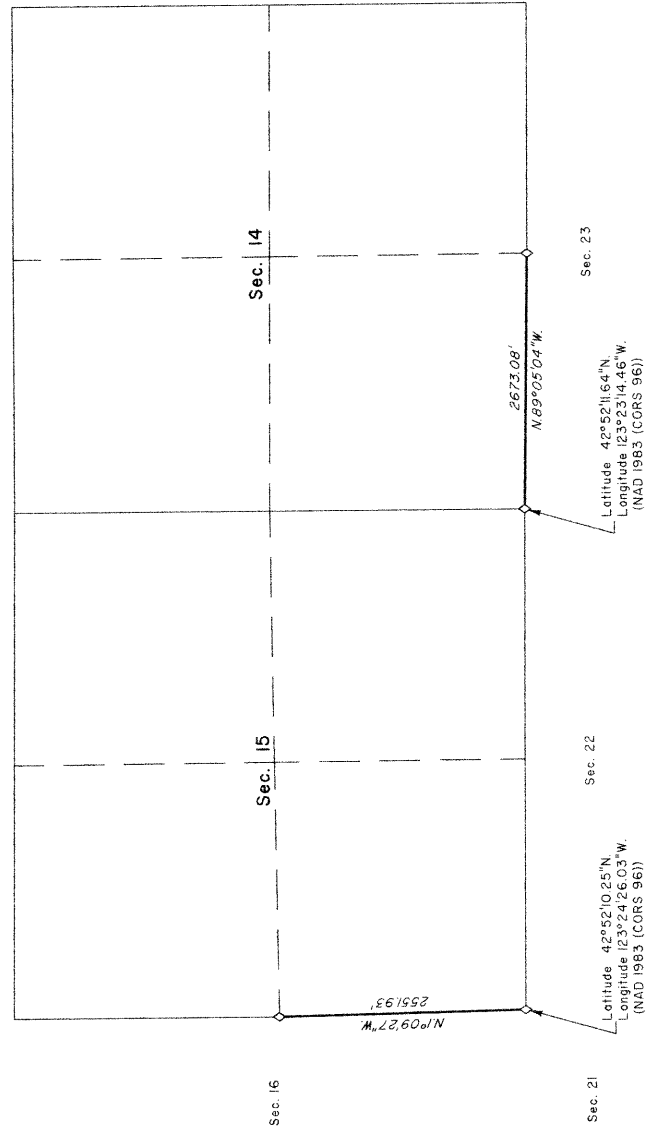
A history of surveys is contained in the field notes.

This plat represents the retracement of a portion of the subdivision lines, T. 31 S., R. 6 W., Willamette Meridian, Oregon.

The survey was performed utilizing both conventional (directly measured angles and distances) and NAVSTAR Global Positioning System (GPS) satellite techniques. The GPS baselines and conventionally measured distances and directions have been adjusted by computer software that incorporates a least squares adjustment routine. The adjusted bearings and distances are reported to the nearest second and 0.01 foot.

Except as shown hereon, the lottings and areas are as shown on the plat approved October 5, 1982.

This survey was executed by Kenneth W. Saveland, Cadastral Surveyor, beginning March 31, 2008 and completed April 10, 2008, pursuant to Special Instructions dated March 16, 2007, under Group Number 2300, Oregon, Administrative File Number 0807.



LEGEND
 ◊ Original corner previously remonumented

UNITED STATES DEPARTMENT OF THE INTERIOR
 BUREAU OF LAND MANAGEMENT

Portland, Oregon

This plat is strictly conformable to the approved field notes and the retracement, having been correctly executed in accordance with the requirements of law and the regulations of this Bureau, is hereby accepted.

For the Director
Mary Kay McLeod
 Chief Cadastral Surveyor of Oregon

Mary Kay McLeod
 July 20, 2010
 Date

