

**UNITED STATES
DEPARTMENT OF THE INTERIOR
BUREAU OF LAND MANAGEMENT**

FIELD NOTES

OF THE

DEPENDENT RESURVEY OF A PORTION OF THE SUBDIVISIONAL LINES

TOWNSHIP 30 SOUTH, RANGE 2 WEST,

OF THE WILLAMETTE MERIDIAN,

IN THE STATE OF OREGON.

EXECUTED BY

Kenneth W. Saveland, Cadastral Surveyor

Under Special Instructions dated February 14, 2008,
approved February 15, 2008, which provided for the surveys included
under Group No. 2190, and Assignment Instructions dated May 19, 2008.

Survey commenced June 2, 2008

Survey completed June 10, 2008

T. 30 S., R. 2 W., Willamette Meridian, Oregon

The following field notes are those of the dependent resurvey of a portion of the subdivisional lines, Township 30 South, Range 2 West, of the Willamette Meridian, Oregon.

The history of Federal surveys pertaining to this survey is as follows:

In 1858, Dennis Hathorn, U.S. Deputy Surveyor, surveyed a portion of the township and subdivisional lines.

In 1909, Fred Mensch, U.S. Deputy Surveyor, surveyed a portion of the township exteriors and the remainder of the subdivisional lines.

In 2000, Timothy J. Moore, Cadastral Surveyor, and Robert H. Browning, Surveying Technician, resurveyed a portion of the subdivisional lines.

The history of state authority surveys pertaining to this survey is as follows:

In 1980, Bruce A. Shaner, Oregon Professional Land Surveyor No. 430, resurveyed a portion of the subdivisional lines and subdivided section 16, filed in the Douglas County Surveyors Office, Roll Map RM 3-35.

In 1981-82, Bruce A. Shaner, Oregon Professional Land Surveyor No. 430, resurveyed a portion of the subdivisional lines and subdivided section 8, filed in the Douglas County Surveyors Office, Roll Map RM 3-55.

The survey was executed in accordance with the specifications set forth in the Manual of Surveying Instructions, 1973, and the Special Instructions dated February 14, 2008, for Group No. 2190, Oregon.

Preliminary to the resurvey, the lines of the prior surveys were retraced and search was made for all corners and other calls of record. Identified corners were remonumented in their original positions. The retracement data were thoroughly verified and only the corner description field notes are given herein. Only those lines bounding or crossing public lands were blazed.

The directions of the lines are based on the true meridian as determined by Global Positioning System (GPS) measurements.

The survey was performed using a combination of GPS satellite techniques and terrestrial measurements. The GPS measurements utilized dual frequency carrier phase receivers and were executed in accordance with the 'Standards and Guidelines for Cadastral Surveys Using Global Positioning System Methods', dated May of 2001, published by the U.S.D.A. Forest Service and U.S.D.I. Bureau of Land Management.

The static GPS measurements have been adjusted using computer software that incorporates a least squares adjustment routine. The maximum GPS Cadastral Measurement error ellipse at 95% confidence level is 0.09 feet based on local accuracy standards. Terrestrial distances and directions have been adjusted using computer software that incorporates a

T. 30 S., R. 2 W., Willamette Meridian, Oregon

least squares adjustment routine. The adjusted bearings and distances are reported to the nearest second and 0.01 foot.

The geographic position (NAD 1983 (CORS 96)) of the 1/4 section corner of section 16 only, as determined by a tie from a temporary GPS control point, established utilizing dual frequency, carrier phase GPS receivers, using for control National Spatial Reference System Continuously Operating Reference Station (CORS) "CAPE BLANCO CORS ARP", and National Cooperative CORS Network Station "ROSEBURG COOP CORS ARP", is as follows:

Latitude: 42° 58' 30.85" N. Longitude: 122° 57' 09.06" W.

Each new bearing tree has a 2 1/2 inch x 1/4 inch magnetic nail (Mag Nail) driven at the base on right side center, unless otherwise noted in the corner description.

**Dependent Resurvey of a Portion of the Subdivisional Lines,
T. 30 S., R. 2 W., Willamette Meridian, Oregon**

The cor. of secs. 8 and 9 only, remonumented by Douglas County Surveyors Office in 1968, monumented with an iron post, 1 1/4 ins. diam., firmly set, projecting 14 ins. above ground, with brass cap mkd.

COUNTY SURVEYORS OFFICE

T 30 S R 2 W

S 8 | S 9

S 16

1968

from which bearing trees mkd. by Douglas County Surveyors Office, reported by Moore and Browning

A fir, 25 ins. diam., bears N. 64 3/4° E., 20.9 ft. dist., with a healed blaze.

A fir, 27 ins. diam., bears N. 56° W., 64.4 ft. dist., with a healed blaze.

and a bearing tree mkd. by Shaner in 1981-82, reported by Moore and Browning

A fir, 26 ins. diam., bears S. 24 1/2° W., 18.3 ft. dist., with a healed blaze.

Corner is located on a W. slope, 1 ft. South of a wooden fence post at the corner of barbed-wire fence lines extending N. and E.

From the corner N. 0° 05' 00" E., at:

265 ft. dist., a dirt road intersection, 14 ft. wide, with roads extending N. 45° W., N. 80° W., and S. 45° E.

From the corner S. 89° 42' 10" E., at:

80 ft. dist., a gravel road, 14 ft. wide, bears N. 10° E. and S. 10° W.

**Dependent Resurvey of a Portion of the Subdivisional Lines,
T. 30 S., R. 2 W., Willamette Meridian, Oregon**

The 1/4 sec. cor. of sec. 9 only, perpetuated by Douglas County Surveyors Office in 1968, filed in the Douglas County Surveyors Record of Government Corners Renewed, T. 30 S., R. 2 W., Point Identifier No. 340500, subsequently perpetuated by Shaner in 1980, monumented with an iron post, 1 1/4 ins. diam., firmly set, projecting 14 ins. above ground, with brass cap mkd.

COUNTY SURVEYORS OFFICE

T 30 S R 2 W

1/4 S 9

—●—
1968

from which the remains of the original bearing trees

A roothole bears N. 32° E., 22.4 ft. dist., with an uprooted, sawed fir stump, 36 ins. diam., lying alongside, with no marks visible.

A roothole bears N. 84° W., 54.1 ft. dist., with a fallen fir snag, size indeterminate, lying alongside, with a healed blaze.

and a bearing tree mkd. by Douglas County Surveyors Office

A cedar, 26 ins. diam., bears N. 84 1/2° W., 17.9 ft. dist., with a healed blaze.

and a bearing tree mkd. by Shaner

A cedar, 11 ins. diam., bears N. 19° W., 32.0 ft. dist., with a healed blaze.

Corner is located on a broken NE. slope, in a barbed-wire fence line, fence bears E. and W.

From this corner, the 1/4 sec. cor. of sec. 16 only bears S. 89° 28' 17" W., 208.22 ft. dist., described on page 21964.

**Dependent Resurvey of a Portion of the Subdivisional Lines,
T. 30 S., R. 2 W., Willamette Meridian, Oregon**

The 1/4 sec. cor. of sec. 16 only, perpetuated by Shaner in 1980, monumented with an iron post, 2 1/2 ins. diam., firmly set, projecting 5 ins. above ground, in a collar of stone (alongside of which is the original basalt stone, 16 x 10 x 6 ins., firmly set, projecting 4 ins. above ground, mkd. 1/4 on S. face), with brass cap mkd.

T 30 S R 2 W W.M.

1/4 S —●—
S 16
ONLY
RLS 430 1980

from which the remains of an original bearing tree

A roothole bears S. 9° W., 11.9 ft. dist.

and bearing trees mkd. by Shaner

A cedar, 27 ins. diam., bears S. 53 3/4° E., 38.0 ft. dist., with a healed blaze.

A fir, 15 ins. diam., bears S. 5 3/4° W., 25.2 ft. dist., with a healed blaze.

Bury the original stone alongside the iron post.

Corner is located on a broken NE. slope, in a barbed-wire fence line, bears E. and W.

From this corner, the 1/4 sec. cor. of sec. 9 only bears N. 89° 28' 17" E., 208.22 ft. dist., described on page 21963.

**Dependent Resurvey of a Portion of the Subdivisional Lines,
T. 30 S., R. 2 W., Willamette Meridian, Oregon**

The S 1/16 sec. cor. of secs. 8 and 9, established by Shaner in 1981-82 and is accepted as the corner, monumented with an iron post, 2 1/2 ins. diam., firmly set, projecting 7 ins. above ground, with brass cap mkd.

SHANER ENGINEERING
T 30 S R 2 W W.M.

S 1/16 S8 | S9

R.L.S. 430 1981

from which the remains of bearing trees mkd. by Shaner

A fir, 24 ins. diam., bears S. 51 3/4° E., 41.3 ft. dist., with a healed blaze.

A sawed cedar stump, 36 ins. diam., bears S. 60 1/2° W., 55.5 ft. dist., with a healed blaze.

and a new bearing tree

A fir, 10 ins. diam., bears N. 75 1/2° W., 29.4 ft. dist., mkd. S 1/16 S8 BT.

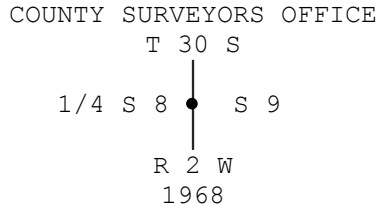
The corner is located on a SW. slope, 1.5 ft. East of a barbed-wire fence line, bears N. and S.

From the corner S. 0° 05' 00" W., at:

115 ft. dist., a draw, drains S. 65° W.

**Dependent Resurvey of a Portion of the Subdivisional Lines,
T. 30 S., R. 2 W., Willamette Meridian, Oregon**

The 1/4 sec. cor. of secs. 8 and 9, perpetuated by the Douglas County Surveyors Office in 1968, subsequently perpetuated by Shaner in 1981-82, further perpetuated by the Douglas County Surveyors Office in 1984, filed in the Douglas County Surveyors Record of Government Corners Renewed, T. 30 S., R. 2 W., Point Identifier No. 300540, monumented with an iron post, 1 1/4 ins. diam., firmly set, flush with ground surface, with brass cap mkd.



from which the remaining original bearing tree

A maple, 25 ins. diam., bears S. 53 1/2° W., 4.3 ft. dist., with no marks visible.

and the remains of a bearing tree by Douglas County Surveyors Office in 1968

A sawed, decayed fir stump, 13 ins. diam., bears N. 56 1/4° E., 53.6 ft. dist., with no marks visible and a metal cover.

and bearing trees mkd. by Shaner

A fir, 38 ins. diam., bears S. 41° E., 48.7 ft. dist., with a healed blaze.

A fir, 34 ins. diam., bears S. 78 3/4° W., 63.4 ft. dist., with a healed blaze.

and bearing trees mkd. by Douglas County Surveyors Office in 1983

A fir, 34 ins. diam., bears S. 37 3/4° W., 14.1 ft. dist., with a healed double blaze.

A maple, 16 ins. diam., bears N. 66 1/2° W., 31.8 ft. dist., with a healed blaze.

Corner is located on a N. slope, in a barbed-wire fence line, bears N. and S.

From the corner S. 0° 04' 38" W., at:

145 ft. dist., dirt road, 9 ft. wide, bears N. 50° E. and S. 80° W., in curve.

T. 30 S., R. 2 W., Willamette Meridian, Oregon**GENERAL DESCRIPTION**

The lands embraced in the foregoing survey are located in mountainous terrain, approximately 3 miles northerly of Tiller, Oregon. The elevation ranges from approximately 2700 above sea level near the corner of sections 8 and 9 only to approximately 2900 above sea level near the 1/4 section corner of section 9 only.

The area is drained by Dompier creek which flows easterly to the South Umpqua River and Ruby Creek which flows westerly into Coffee Creek, with several other seasonal drainages. The timber consists of alder, cedar, chinquapin, fir, hemlock, madrone, maple, pine, and yew. The undergrowth consists mainly of arrow wood, ferns, manzanita, Oregon grape, salal, and vine maple.

The soil is generally composed of rocky clay and no mineral deposits were noted along the lines surveyed. The lands primary uses are timber production, wildlife habitat, and recreation.

Access to the survey was obtained by gravel and dirt roads branching from BLM Road No. 30-2-23.

The mean magnetic declination for the area surveyed is 16° East, as determined by the National Geophysical Data Center (NGDC) of the National Oceanic and Atmospheric Administration (NOAA), obtained on June 2, 2008, from the world-wide web at <http://www.ngdc.noaa.gov/geomagmodels/struts/calcDeclination>.