

THERE ARE NO LINE NOTES TO GO WITH THIS RETRACEMENT - ALL OF THE AVAILABLE INFORMATION IS ON THIS PLAT

OFFICIALLY FILED: 1/12/2010

ORIGINAL

SHEET 1 OF 2

TOWNSHIP 31 SOUTH, RANGE 4 WEST, OF THE WILLAMETTE MERIDIAN, OREGON

RETRACEMENT AND REMONUMENTATION

FILED Date: 2/17/2010 By: J.C. This survey consists of: Map: MAP IN BOOK A COPY IN: Horizontal: VOL. 55 P. 55 21926-7 Vertical: DOUGLAS COUNTY SURVEYOR

This plat represents the entire record of the retracement of a portion of the subdivisional lines, and remonumentation of certain corner points, T. 31 S., R. 4 W., Willamette Meridian, Oregon.

A. history of surveys pertaining to this retracement is as follows:

In 1894, William M. Busbey, U.S. Deputy Surveyor, surveyed portions of the south and west boundaries and a portion of the subdivisional lines.

This retracement and remonumentation was executed by A. Bert Skeesick, Cadastral Surveyor, and Robert H. Browning, Surveying Technician, beginning June 20, 2008, completed July 26, 2008, in accordance with the specification set forth in the Manual of Surveying Instructions, 1973, pursuant to Special Instructions dated March 16, 2007, approved March 21, 2007, which provided for the survey included under Group Number 2300, Oregon, and Assignment Instructions dated May 20, 2008. They were assisted by Thomas A. Holloman, Marc A. Montpos and Karl NMI Krom, Surveying Technicians.

The retracement data was thoroughly verified and the true line field notes are given hereon. Only those lines bounding or crossing public land were blazed.

The directions of the lines are based on the true meridian as determined by direct solar observation.

An analysis of the unadjusted field data assured a closure not exceeding 1:4000 in error. Measured distances and directions have been adjusted by computer software that incorporates a least squares adjustment routine. The adjusted bearings and distances are reported to the nearest second and 0.01 foot.

Each new bearing tree has a 2 1/2 inch x 1/4 inch magnetic nail (Mag Nail) driven at the base on right side center, unless otherwise noted in the corner description.

The geodetic positions shown hereon were determined by the utilizing dual frequency carrier phase GPS receivers relative to the National Spatial Reference System.

UNITED STATES DEPARTMENT OF THE INTERIOR BUREAU OF LAND MANAGEMENT

Portland, Oregon

The retracement represented by this plat, having been correctly executed in accordance with the requirements of law and the regulations of this Bureau, is hereby accepted.

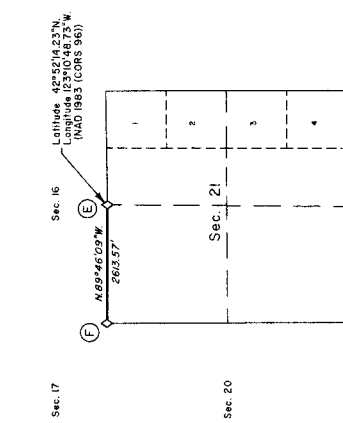
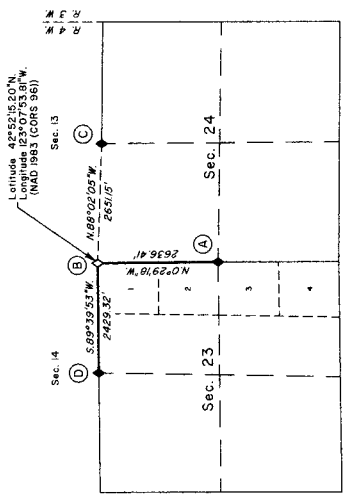
For the Director

Mary J. M. Hunter

Chief Cadastral Surveyor of Oregon

October 29, 2009

Date

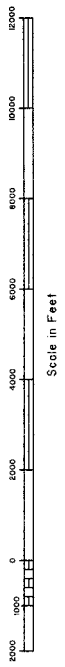


LEGEND
Original corner previously remonumented
Original corner remonumented this survey

We, A. Bert Skeesick, Cadastral Surveyor, and Robert H. Browning, Surveying Technician, HEREBY CERTIFY upon honor that in pursuance of Special Instructions bearing date of the 16th day of March, 2007, we have retraced a portion of the subdivisional lines, and remonumented certain corner points in Township 31 South, Range 4 West, Willamette Meridian Oregon. Said retracement has been executed in strict conformity with said Special Instructions for the survey of the Public Lands of the United States, and in specific manner described on this plat.

[Signature] Cadastral Surveyor Date 10/22/2009

[Signature] Surveying Technician Date 10/22/09



7352