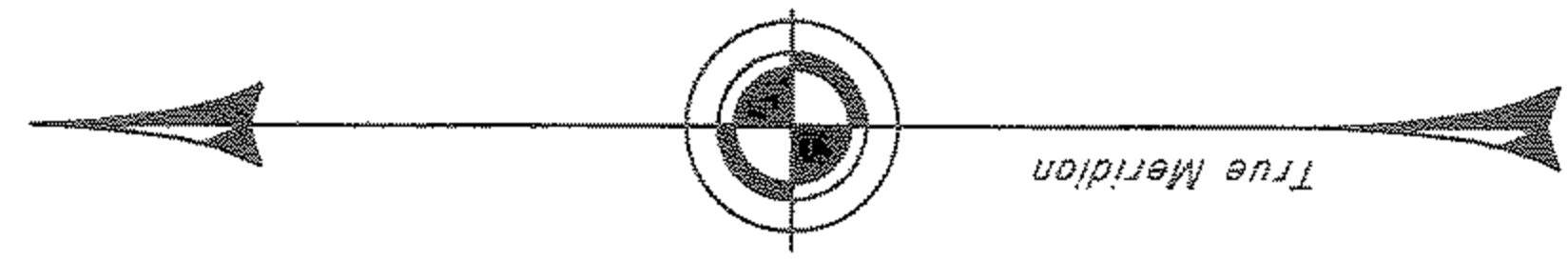


TOWNSHIP 27 SOUTH, RANGE 4 WEST, OF THE WILLAMETTE MERIDIAN, OREGON

RETRACEMENT



This plat represents the entire record of the retracement of a portion of the subdivisional lines, T. 27 S., R. 4 W., Willamette Meridian, Oregon, designed to restore the corners in their true original locations according to the best available evidence.

A history of surveys pertaining to this retracement is as follows:

In 1855, Addison R. Flint, U.S. Deputy Surveyor, surveyed the east boundary and a portion of the subdivisional lines.

In 1917, Elmer F. Strickler, U.S. Transitman, resurveyed a portion of east boundary and surveyed the remainder of the subdivisional lines.

In 2001, A. Bert Skeesick, Cadastral Surveyor, resurveyed a portion of the east boundary and subdivisional lines and subdivided section 13.

This survey was executed by A. Bert Skeesick, Cadastral Surveyor, and Robert H. Browning, Surveying Technician, beginning March 3, 2008, and completed March 13, 2008, in accordance with the specification set forth in the Manual of Surveying Instructions, 1973; pursuant to Special Instructions dated March 16, 2007, approved March 21, 2007, which provided for the survey included under Group Number 2300, Oregon, and Assignment Instructions dated February 28, 2008. They were assisted by Thomas A. Hollamon, and Karl NMI Krom, Surveying Technicians.

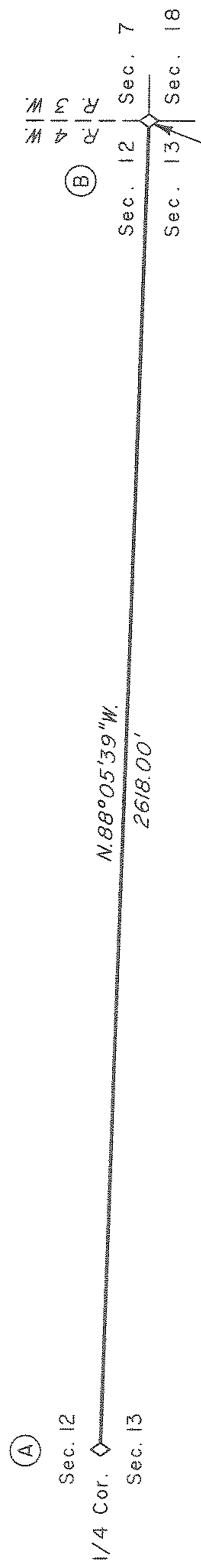
Preliminary to the retracement, the lines of the prior surveys were retraced and a search was made for all corners and other calls of record. The retracement data were thoroughly verified and only the true line field notes are given hereon. Only those lines bounding or crossing public land were blazed.

The directions of the lines are based on the true meridian as determined by Global Positioning System (GPS) measurements.

An analysis of the unadjusted field data assured a closure not exceeding 1:4000 in error. Measured distances and directions have been adjusted by computer software that incorporates a least squares adjustment routine. The adjusted bearings and distances are reported to the nearest second and 0.01 foot.

Each new bearing tree has a 1/2 inch x 1/4 inch magnetic nail (Mag Nail) driven at the base on right side center, unless otherwise noted in the corner description.

The geodetic position shown hereon was determined by a tie utilizing dual frequency carrier phase GPS receivers relative to the National Spatial Reference System.



Latitude 43°13'40.68"N
 Longitude 123°06'32.46"W
 (NAD 1983 (CORS 96))

(A) The 1/4 sec. cor. of secs. 12 and 13, monumented with an iron post, 1 in. diam., firmly set, projecting 12 ins. above the ground, with brass cap mkd. by Skeesick

S 12
 S 13
 1917

(B) The cor. of secs. 7, 12, 13, and 18 on the East bdy. of the Tp., monumented with an iron post, 2 ins. diam., firmly set, projecting 11 ins. above the ground, with brass cap mkd. by Skeesick

T 27 S
 R 4 W R 3 W
 S 12 S 7
 S 13 S 18
 1917

from which the remains of bearing trees mkd. by Strickler, reported by Skeesick

A roothole bears N. 56° E., 35.6 ft. dist., with a decayed fir trunk, size indeterminate, lying alongside, with no marks visible.

A fir, 24 ins. diam., bears S. 13 1/2° E., 19.8 ft. dist., with a healed blaze.

and bearing tree mkd. by Milo E. Godfrey, Deputy County Surveyor, in 1963, filed in the Douglas County Surveyors Record of Government Corners Renewed, T. 27 S., R. 4 W., Point Identifier No. 640500, reported by Skeesick

A fir, 23 ins. diam., bears N. 1 1/2° E., 54.1 ft. dist., with a healed blaze.

from which the remaining bearing trees mkd. by Strickler, reported by Skeesick

A fir, 43 ins. diam., bears N. 17° E., 112 ft. dist., with a healed blaze.

A fir, 47 ins. diam., bears S. 58° W., 30.0 ft. dist., with a healed blaze.

A fir, 28 ins. diam., bears N. 54° W., 30.4 ft. dist., with a healed blaze.

and bearing tree mkd. by Milo E. Godfrey, Deputy County Surveyor, in 1963, filed in the Douglas County Surveyors Record of Government Corners Renewed, T. 27 S., R. 4 W., Point Identifier No. 700500, reported by Skeesick

A fir, 20 ins. diam., bears S. 41° E., 34.0 ft. dist., with a healed blaze. (Record 43 ins. diam.)

◇ Original corner previously remonumented

UNITED STATES DEPARTMENT OF THE INTERIOR
 BUREAU OF LAND MANAGEMENT
 Portland, Oregon

The retracement represented by this plat, having been correctly executed in accordance with the requirements of law and the regulations of this Bureau, is hereby accepted.

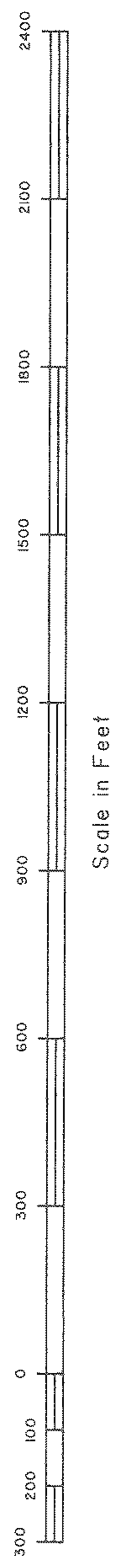
For the Director
 John P. Harcourt, Acting
 Chief Cadastral Surveyor of Oregon

September 30, 2009
 Date

We, A. Bert Skeesick, Cadastral Surveyor, and Robert H. Browning, Surveying Technician, HEREBY CERTIFY upon honor that in pursuance of Special Instructions bearing date of the 16th day of March, 2007, we have retraced a portion of the subdivisional lines, Township 27 South, Range 4 West, Willamette Meridian Oregon. Said retracement has been executed in strict conformity with said Special Instructions, the Manual of Instructions for the Survey of the Public Lands of the United States, and in specific manner described upon this plat.

[Signature]
 Cadastral Surveyor
 Date September 24, 2009

[Signature]
 Surveying Technician
 Date September 28, 2009



OFFICIALLY FILED: 10/16/2009

THERE ARE NO LINE NOTES TO GO WITH THIS RETRACEMENT - ALL OF THE AVAILABLE INFORMATION IS ON THIS PLAT