

ORIGINAL

7301

FILED
Date: 3/31/2009 By: JC
This survey consists of:
Map: 2009-1A AND B
Narrative: VOL 55
Corner Rpt: 21619 + 21620
DOUGLAS COUNTY
SURVEYOR

TOWNSHIP 30 SOUTH, RANGE 4 WEST, OF THE WILLAMETTE MERIDIAN, OREGON SHEET 1 OF 2

RETRACEMENT, REHABILITATION AND REMONUMENTATION

This plat represents the entire survey record of the retracement of a portion of the east boundary and subdivisional lines, and remonumentation and/or rehabilitation of certain corner points, T. 30 S., R. 4 W., Willamette Meridian, Oregon.

The history of the surveys pertaining to this retracement is as follows:

In 1855, Nathaniel Ford, U.S. Deputy Surveyor, surveyed the east, south, and north boundaries, and a portion of the subdivisional lines.

In 1857, Daniel Hathorn, U.S. Deputy Surveyor, surveyed a portion of the subdivisional lines.

In 1869, William Thiel, U.S. Deputy Surveyor, resurveyed a portion of the township boundaries and subdivisional lines, and surveyed a portion of the subdivisional lines.

In 1889, William F. Briggs, U.S. Deputy Surveyor, resurveyed a portion of the subdivisional lines, superseding portions of the prior 1855 and 1869 surveys.

In 1893, William M. Bushey, U.S. Deputy Surveyor, resurveyed a portion of the west boundary of T. 30 S., R. 3 W.

In 1965, John M. Jolley, Cadastral Surveyor, resurveyed a portion of the west boundary of T. 30 S., R. 3 W.

In 1983-84, Wayne L. Rogers, Lance J. Bishop, and James L. White, Cadastral Surveyors, resurveyed a portion of the west boundary of T. 30 S., R. 3 W.

In 1988, Wayne L. Rogers, Cadastral Surveyor, resurveyed a portion of the east boundary and subdivisional lines, and subdivided section 13.

The retracement, rehabilitation and remonumentation was executed by A. Bert Skeesick, Cadastral Surveyor, and Robert H. Browning, Surveying Technician, beginning August 11, 2005, and completed August 20, 2005, pursuant to Special Instructions for Group 2000, dated February 22, 2002; Group 2100, dated March 8, 2004; and Group 2300, dated March 16, 2007; under Assignment instructions dated November 16, 2004, and Group 2100 re-Assignment dated March 16, 2007. They were assisted by Robert NMI Durning and Thomas A. Hollaman, Surveying Technicians.

The retracement data were thoroughly verified and only the true line data is given hereon.

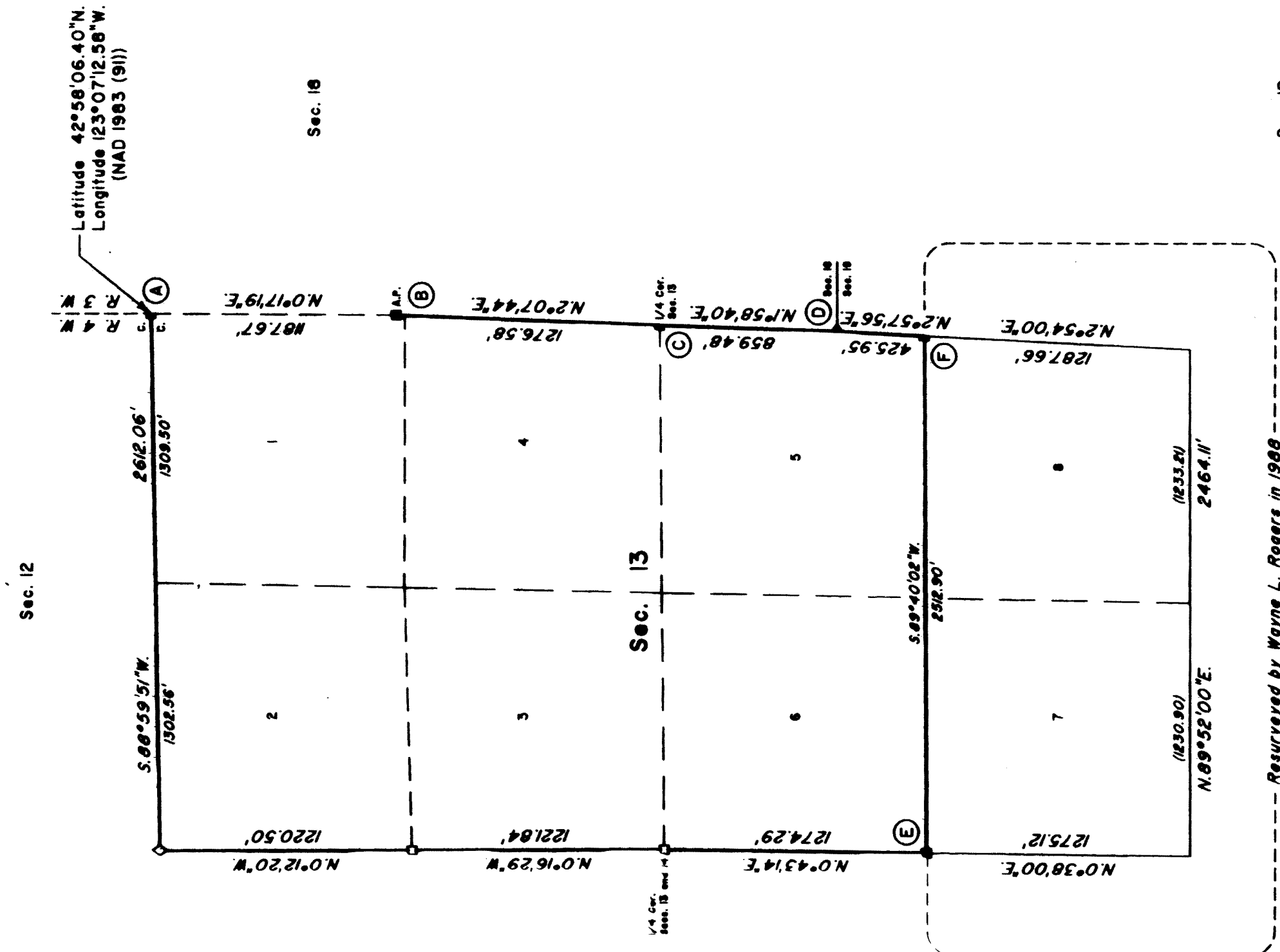
The directions of the lines were determined by direct solar observation and refer to the true meridian.

The survey was performed utilizing both conventional (directly measured angles and distances) and NAVSTAR Global Positioning System (GPS) satellite techniques. The GPS measurements utilized dual frequency, carrier phase GPS receivers. The baselines were computed in and adjusted by least squares analysis. An analysis of the unadjusted field data assured a closure not exceeding 1:4000 in error. Conventionally measured distances and directions have been adjusted by computer software that incorporates a least squares adjustment routine. The adjusted bearings and distances are reported to the nearest second and 0.01 foot.

Unless otherwise noted on sheet 2, the corner descriptions were verified during the course of this retracement, and are as described in the survey by Rogers in 1988.

The lottings and areas are as shown on the plat approved October 23, 1882.

The geodetic position shown hereon was determined by a tie utilizing dual frequency carrier phase GPS receivers relative to the National Spatial Reference System.



LEGEND

- ◇ Original corner previously remonumented
- Corner previously established or reestablished
- ▲ Original corner rehabilitated or remonumented this survey
- Corner previously established or reestablished; rehabilitated or remonumented this survey

We, A. Bert Skeesick, Cadastral Surveyor, and Robert H. Browning, Surveying Technician, HEREBY CERTIFY upon honor that in pursuance of Special Instructions bearing the 22nd day of February, 2002; the 8th day of March, 2004; and the 16th day of March, 2007, we have retraced a portion of the east boundary and subdivisional lines and rehabilitated and remonumented certain original corner points in Township 30 South, Range 4 West, Willamette Meridian, Oregon. Said retracement has been executed in strict conformity with said Special Instructions, the Manual of Instructions for the Survey of the Public Lands of the United States, and in specific manner described on this plat.

[Signature]
Cadastral Surveyor

[Signature]
Surveying Technician

Date: 03/09/2009

Date: 03/09/2009

UNITED STATES DEPARTMENT OF THE INTERIOR
BUREAU OF LAND MANAGEMENT
Portland, Oregon

The retracement represented by this plat, having been correctly executed in accordance with the requirements of law and the regulations of this Bureau, is hereby accepted.

For the Director
[Signature]
Chief Cadastral Surveyor of Oregon

March 12, 2009
Date