

TOWNSHIP 31 SOUTH, RANGE 3 WEST, OF THE WILLAMETTE MERIDIAN, OREGON

RETRACEMENT, REHABILITATION, AND REMONUMENTATION

FILED
Date: 3/2/2009 By: JC
This survey consists of:
Map:
Narrative: VOL. 55 PG. 21618
Corner Rpt. VOL. 55 PG. 21618
DOUGLAS COUNTY
SURVEYOR

(A) The 1/4 sec. cor. of secs. 10 and 11, monumented with an iron post, 2 1/2 in. diam., firmly set, projecting 1 in. above ground, with brass cap mkd. as reported by Jelley in 1964; from which the remains of a bearing tree mkd. by Jelley

A sowed, burnt fir stump, 20 in. diam., bears N. 26 1/2° W., 21.9 ft. dist., with scribe marks 1/4 visible on an open blaze. (Record N. 32° W., 20.5 ft.)

and new bearing trees

A madrone, 5 in. diam., bears S. 70 1/2° E., 10.0 ft. dist., mkd. 1/4 S11 BT in the bark.

A madrone, 4 in. diam., bears N. 11 1/2° W., 16.0 ft. dist., mkd. 1/4 S10 BT in the bark.

Corner is located 63.0 ft. North of a gravelled road, 15 ft. wide, which bears N. 85° E. and S. 59° W.

(B) The cor. of secs. 3, 4, 9 and 10, monumented with the orig. basalt stone, 10x6x2 in. showing above ground, with faint notches visible on SW. edge, with an iron post, 1 1/4 in. diam., firmly set alongside the orig. stone, projecting 8 in. above ground, with brass cap mkd. as reported by Jelley in 1964; from which the remains of the orig. bearing trees

A sowed, decayed fir stump, 30 in. diam., bears S. 65 1/2° W., 12.9 ft. dist., with no marks visible.

A sowed, decayed fir stump, 20 in. diam., bears N. 49° W., 24.1 ft. dist., with no marks visible.

and the remains of bearing trees reported by Jelley

A fir snag, 37 in. diam., bears N. 22° E., 56.8 ft. dist., with no marks visible.

A sowed, burnt cedar stump, 37.0 ft. dist., with a headed blaze.

and new bearing trees

A fir, 5 in. diam., bears N. 88° E., 16.0 ft. dist., mkd. X BT.

A fir, 4 in. diam., bears S. 42 1/2° E., 13.8 ft. dist., mkd. X BT.

A fir, 5 in. diam., bears S. 22 1/4° W., 15.0 ft. dist., mkd. X BT.

A fir, 6 in. diam., bears N. 7 1/2° W., 6.9 ft. dist., mkd. T31S R3W S4 BT.

(C) The 1/4 sec. cor. of secs. 3 and 4, perpetuated by John H. Merkhom, Jr., Oregon Registered Engineer No. 2880, in 1960, remonumented by John M. Powell, Douglas County Surveyors Office, in 1966, recorded in the Douglas County Surveyors Record of Government Corners Renewed, T. 31 S., R. 03 W., Point Identifier No. 400640, monumented with an iron post, 1 1/4 in. diam., firmly set, projecting 9 in. above ground (alongside of which is an iron pipe, 3/4 in. diam., firmly set, projecting 5 in. above ground), with brass cap mkd.

County Surveyors Office T31S R3 1/4 S4 S3 W 1966

from which the remains of the original bearing trees

A sowed, decayed fir stump, 30 in. diam., bears N. 40 1/2° E., 11.2 ft. dist., with no marks visible.

A cedar snag, 25 in. diam., bears N. 35 1/2° W., 25.7 ft. dist., with a headed blaze.

and the remains of a bearing tree mkd. by Merkhom

A burnt fir snag, 31 in. diam., bears S. 2° E., 14.0 ft. dist., with a headed blaze.

and new accessories

A fir, 5 in. diam., bears N. 23 1/2° E., 15.2 ft. dist., mkd. X BT.

A rebar, 30 in. long, 5/8 in. diam., driven 29 in. in the ground as a reference monument, bears S. 43° E., 7.5 ft. dist., with aluminum cap mkd. RM T31S R3W S3 7.5 FT TO COR 2005, and an arrow pointing to the cor.

A rebar, 30 in. long, 5/8 in. diam., driven 27 in. in the ground as a reference monument, bears S. 44° W., 7.4 ft. dist., with aluminum cap mkd. RM T31S R3W S4 7.4 FT TO COR 2005, and an arrow pointing to the cor.

(D) The 1/4 sec. cor. of secs. 4 and 5, perpetuated by John H. Merkhom, Jr., Oregon Registered Engineer No. 2880, date unknown, further perpetuated by John M. Powell, Douglas County Surveyors Office, in 1966, recorded in the Douglas County Surveyors Record of Government Corners Renewed, T. 31 S., R. 03 W., Point Identifier No. 300640, monumented with a basalt stone, 11x8 in., loosely set, projecting 2 in. above ground, with marks 1/4 visible on NW. face, with an iron post, 28 in. long, 1 1/4 in. diam., lying loose on the ground alongside, with brass cap mkd.

County Surveyors Office T31S R3W 1/4 S5 S4 1966

from which the remains of the orig. bearing trees

A decayed madrone stump, size indeterminate, bears S. 71° E., 9.8 ft. dist., with no marks visible. (Record S. 72 1/2° W.)

A fir snag, 18 in. diam., bears S. 16° W., 10.6 ft. dist., with no marks visible. (Record S. 15° E.)

and the remains of bearing trees mkd. by Merkhom

A sowed, burnt fir stump, 39 in. diam., bears N. 66° W., 25.2 ft. dist., with no marks visible.

A decayed chinquapin stump, size indeterminate, bears N. 66° W., 12.2 ft. dist., with no marks visible.

A decayed madrone stump, size indeterminate, bears N. 8° W., 5.2 ft. dist., with no marks visible.

At the cor. point

Set a stainless steel post, 28 in. long, 2 1/2 in. diam., 25 in. in the ground, with brass cap mkd.

T 31 S R 3 W 1/4 S5 S4 2005

from which

A fir, 3 in. diam., bears N. 65 1/2° E., 8.6 ft. dist., mkd. X BT.

A chinquapin, 5 in. diam., bears N. 60 1/4° W., 11.6 ft. dist., mkd. 1/4 S5 BT in the bark.

This plat represents the entire survey record of the entire survey record of the retrace and rehabilitation of the subdivisional lines and remonumentation of certain corner points, T. 31 S., R. 3 W., Willamette Meridian, Oregon.

The history of the surveys pertaining to this retrace and rehabilitation is as follows:

In 1893, William M. Bushey, U.S. Deputy Surveyor, surveyed a portion of the South boundary, retrace the North boundary, and completed the subdivisional lines.

In 1964, John M. Jelley, Cadastral Surveyor, resurveyed a portion of the subdivisional lines, and subdivided section 10.

In 2004, Timothy J. Moore, Cadastral Surveyor, rehabilitated the center 1/4 sec. cor. of sec. 10.

The retrace, rehabilitation, and remonumentation were executed by A. Bert Skeesick, Cadastral Surveyor, and Robert H. Browning, Surveying Technician, beginning August 11, 2005, and completed February 19, 2006, pursuant to Special Instructions for Group 2000, dated February 22, 2002; Group 2100, dated March 8, 2004; and Group 2300, dated March 16, 2007; and Assignment Instructions dated November 16, 2004, and Group 2100 re-Assignment dated March 16, 2007. They were assisted by Robert NMI Durning and Thomas A. Hollaman, Surveying Technicians.

The directions of the lines were determined by direct solar observations, carried forward by sustained angulation, and refers to the true meridian.

The retrace was performed utilizing both conventional (directly measured angles and distances) and NAVSTAR Global Positioning System (GPS) satellite techniques. The GPS measurements utilized dual frequency, carrier phase GPS receivers. The baselines were computed in and adjusted by least squares analysis. An analysis of the unadjusted field data assured a closure not exceeding 1:4000 in error. Conventionally measured distances and directions have been adjusted by computer software that incorporates a least squares adjustment routine. The adjusted bearings and distances are reported to the nearest second and 0.01 foot.

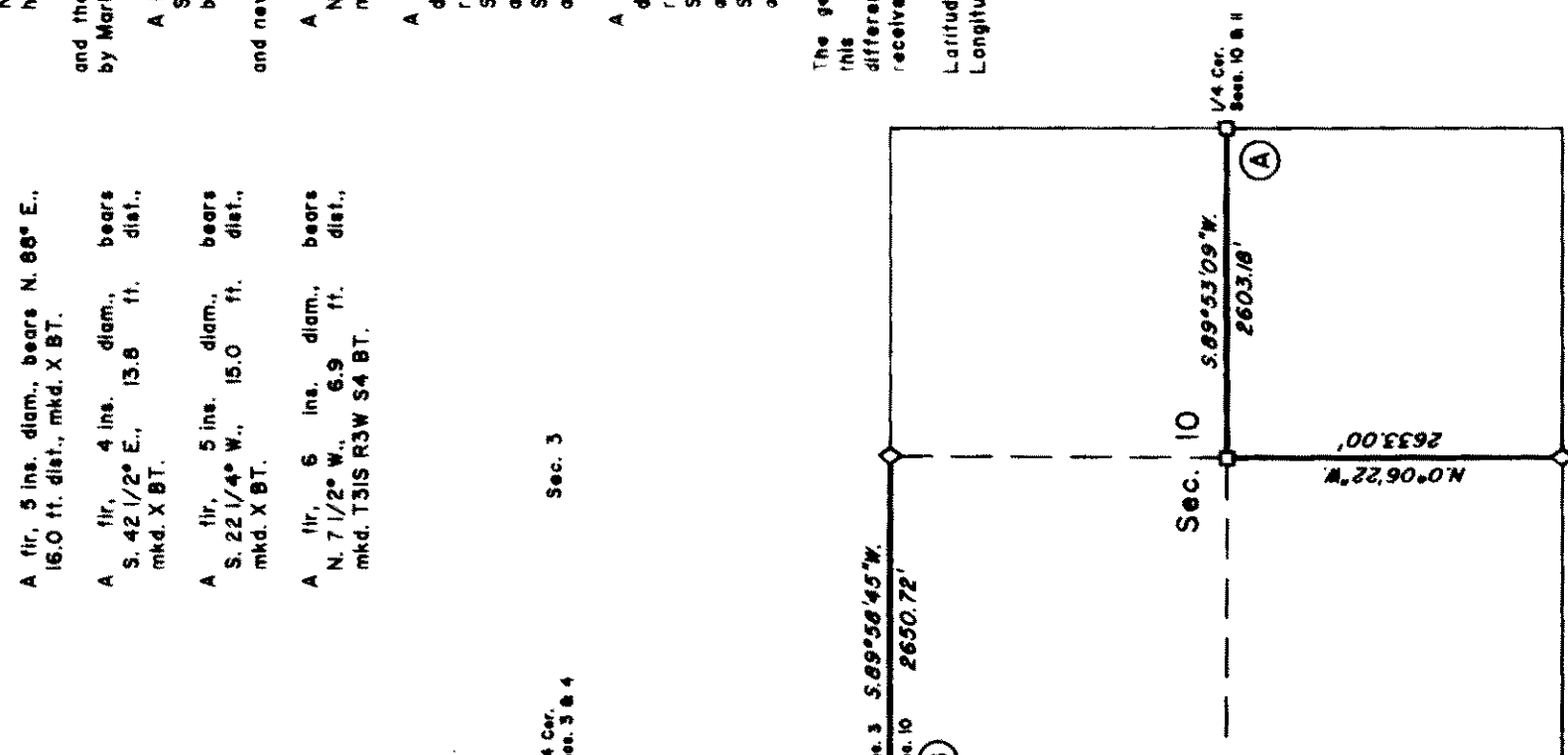
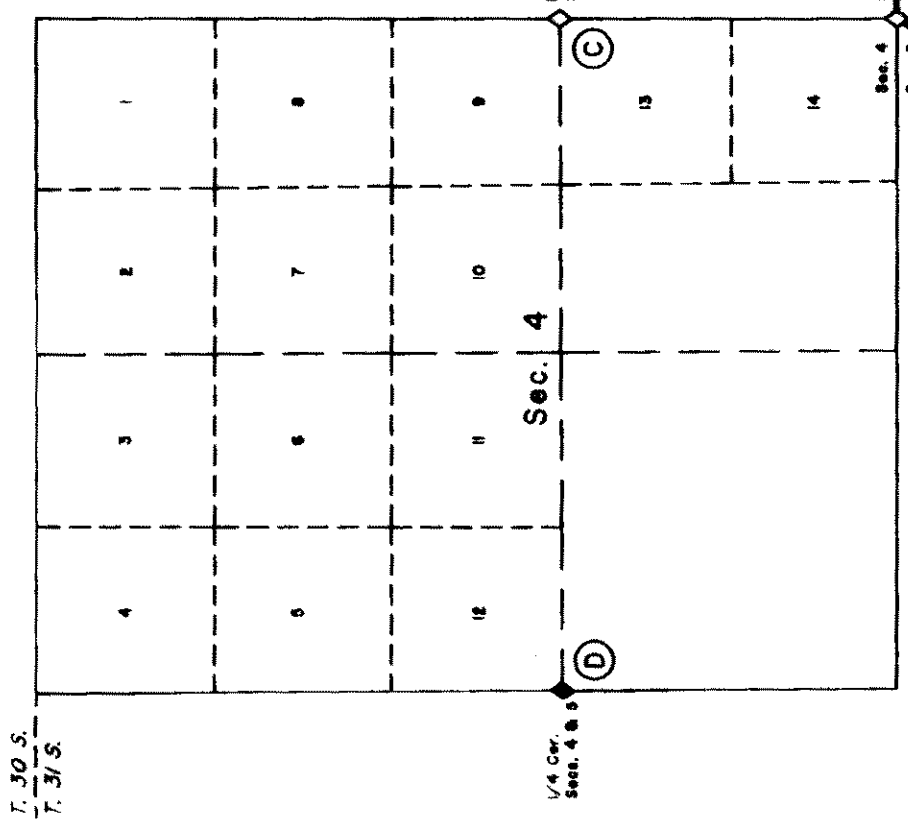
The lottings and areas are as shown on the plat approved June 29, 1895.

Except as noted hereon, the corner descriptions are as reported by Jelley in 1964.

The geodetic positions shown hereon were determined by a tie utilizing dual frequency carrier phase GPS receivers relative to the National Spatial Reference System.

UNITED STATES DEPARTMENT OF THE INTERIOR
BUREAU OF LAND MANAGEMENT
Portland, Oregon

The retrace and rehabilitation represented by this plat, having been correctly executed in accordance with the requirements of law and the regulations of this Bureau, is hereby accepted.



The geographic position (NAD 1983) of this cor. as determined by a differentially corrected code-phase GPS receiver observation, is as follows:
Latitude: 42° 54' 29.0" N.
Longitude: 123° 03' 09.5" W.

The geographic position (NAD 1983) of this cor. as determined by a differentially corrected code-phase GPS receiver observation, is as follows:
Latitude: 42° 54' 26.1" N.
Longitude: 123° 04' 17.9" W.

LEGEND

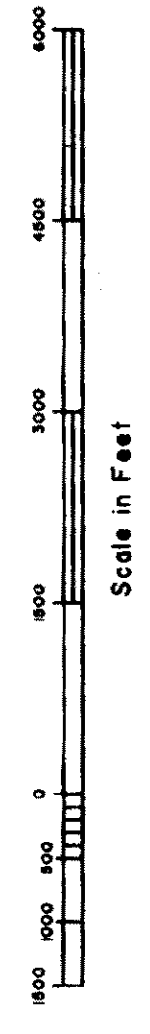
- Original corner previously remonumented
- Original corner remonumented this survey
- Corner previously established or reestablished

We, A. Bert Skeesick, Cadastral Surveyor, and Robert H. Browning, Surveying Technician, HEREBY CERTIFY upon honor that in pursuance of Special Instructions bearing the 22nd day of February, 2002; the 8th day of March, 2004; and the 16th day of March, 2007, we have retraced a portion of the subdivisional lines and rehabilitated or remonumented certain original corner points in Township 31 South, Range 3 West, Willamette Meridian, Oregon. Said retrace, rehabilitation, and remonumentation have been executed in strict conformity with said Special Instructions, the Manual of Instructions for the Survey of the Public Lands of the United States, and in specific manner described on this plat.

[Signature]
Cadastral Surveyor
Date: 01/05/2009

[Signature]
Surveying Technician
Date: 01/05/2009

For the Director
[Signature]
Chief Cadastral Surveyor of Oregon



January 8, 2009
Date