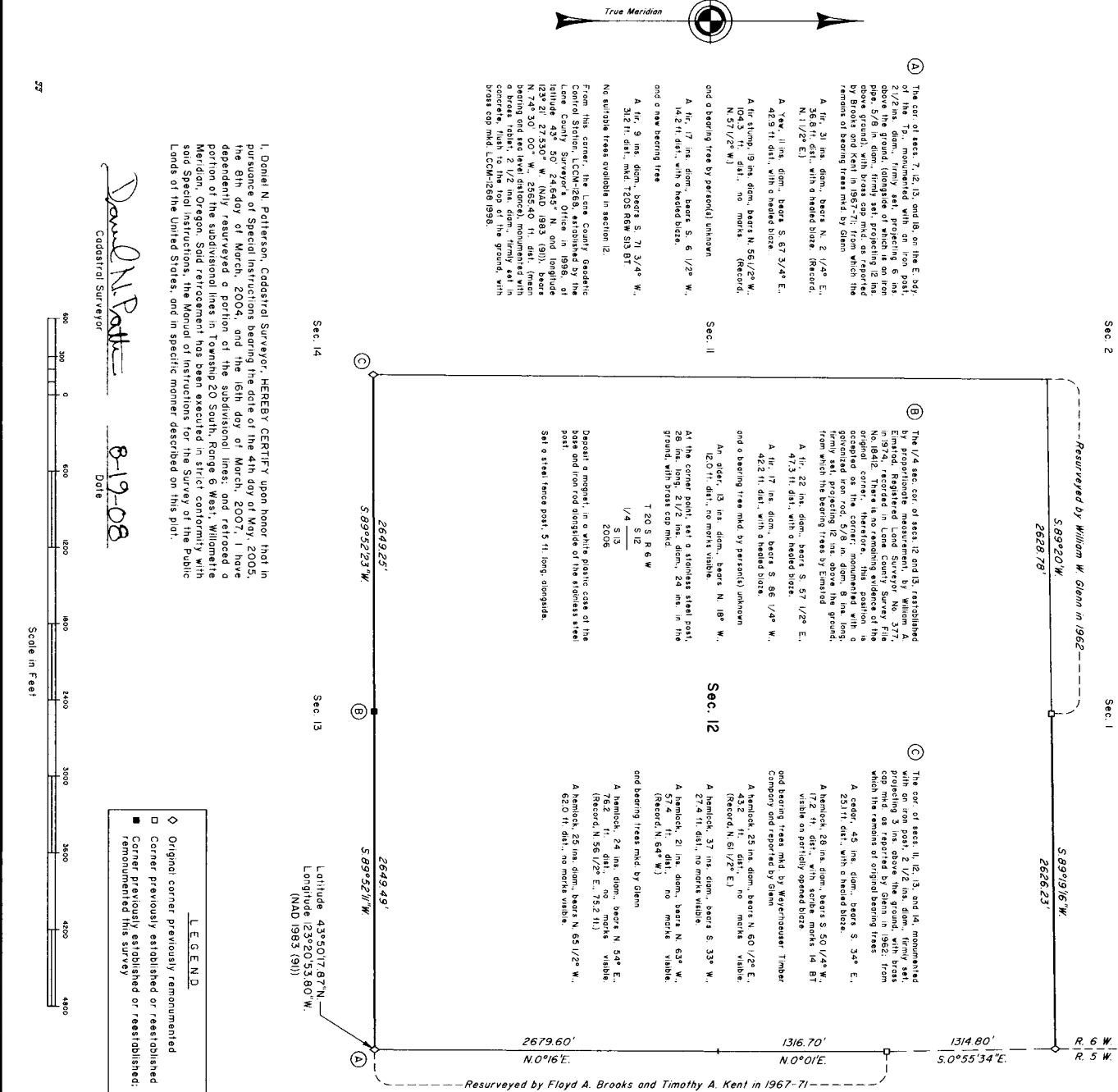


FILED  
DEPT. OF LAND MANAGEMENT  
LAND MANAGEMENT DIVISION  
300 NE Oregon Street, 3rd Floor  
Portland, Oregon 97232  
CODASRAL COUNTY  
SHERIFF'S OFFICE

# TOWNSHIP 20 SOUTH, RANGE 6 WEST, OF THE WILLAMETTE MERIDIAN, OREGON

## DEPENDENT RESURVEY AND RETRACEMENT



57

*Don N. Potterson*  
Cadastral Surveyor

*8-19-08*  
Date



**LEGEND**  
◇ Original corner previously monumented  
□ Corner previously established or reestablished  
■ Corner monumented this survey

*John P. Bennett, Acting*  
Chief Cadastral Surveyor of Oregon

*August 26, 2008*  
Date

UNITED STATES DEPARTMENT OF THE INTERIOR  
BUREAU OF LAND MANAGEMENT  
Portland, Oregon

I, Donel N. Potterson, Cadastral Surveyor, HEREBY CERTIFY upon honor that in pursuance of Special Instructions bearing the date of the 4th day of May, 2005, the 8th day of March, 2004, and the 16th day of March, 2007, I have dependently resurveyed a portion of the subdivisional lines, and retraced a portion of the subdivisional lines in Township 20 South, Range 6 West, Willamette Meridian, Oregon. Said retracement has been executed in strict conformity with said Special Instructions, the Manual of Instructions for the Survey of the Public Lands of the United States, and in specific manner described on this plat.

**Sec. 14**  
No suitable trees available in section 12.  
From this corner, the Lane County Geodetic Control Station, LCCM-2668, established by the Lane County Surveyor's Office in 1986, at latitude 43° 50' 24.645" N, and longitude 123° 21' 27.530" W (NAD 1983) (91), bears N 27° 50' 00" E, 266.925' to a monumented bearing tree, 200' in diameter, mounted in a brass cap mid. 2 1/2" in diam., firmly set in concrete, flush to the top of the ground, with brass cap mid LCCM-2688 1998.

**Sec. 12**  
The cor. of sec. 12, 13, and 14, monumented with an iron post, 2 1/2" in diam., firmly set, projecting 6 in. above the ground, (bearing tree) which is on iron cap mid. 2 1/2" in diam., firmly set in concrete, flush to the top of the ground, as reported by Brooks and Kent in 1967-71; from which the remains of bearing trees used by Glenn  
A. fir, 31 in. diam., bears N. 2 1/4° E, 35.6 ft. dist., with a headed blaze. (Record, N. 1 1/2° E.)  
A. Yew, 11 in. diam., bears S. 57 3/4° E., 42.9 ft. dist., with a headed blaze.  
A. fir, 21 in. diam., bears N. 56 1/2° W., 102.57 ft. dist., no marks. (Record, N. 57 1/2° W.)  
and a bearing tree by personal unknown.  
A. fir, 17 in. diam., bears S. 6 1/2° W., 142.1 ft. dist., with a headed blaze. (Record, N. 57 1/2° W.)  
and a new bearing tree  
A. fir, 9 in. diam., bears S. 71 3/4° W., 312.1 ft. dist., med. TOS raw 59 BT.

**Sec. 11**  
The 1/4 sec. cor. of sec. 12 and 13, reestablished by proportionate measurement, by William A. Emsted, Registered Land Surveyor No. 377, in 1962, recorded in Lane County Survey the original corner, therefore, this position is occupied on the corner, monumented with a galvanized iron rod, 5/8 in. diam., 8 in. long, from which the bearing trees by personal  
A. fir, 22 in. diam., bears S. 57 1/2° E., 47.3 ft. dist., with a headed blaze.  
A. fir, 17 in. diam., bears S. 66 1/4° W., 42.2 ft. dist., with a headed blaze.  
and a bearing tree mid. by personal unknown  
An elder, 13 in. diam., bears N. 18° W., 12.0 ft. dist., no marks visible.  
At the corner point, set a stainless steel post, 26 in. long, 2 1/2" in diam., 24 in. in the ground, with brass cap mid.  
T 20 S R 6 W  
1/4 1/4  
S 13  
2006  
Deposit a magnet, in a white plastic case of the bore and iron rod alongside of the stainless steel post.  
Set a steel fence post, 5 ft. long, alongside.

**Sec. 13**  
The cor. of sec. 11, 12, 13, and 14, monumented with an iron post, 2 1/2" in diam., firmly set, projecting 3 in. above the ground, with brass cap mid. as reported by Glenn in 1962, from which the remains of original bearing trees  
A cedar, 45 in. diam., bears S. 34° E., 231 ft. dist., with a headed blaze.  
A hemlock, 28 in. diam., bears S. 50 1/4° W., 172 ft. dist., with scales marks 14 BT visible on partially opened blaze  
and bearing trees mid. by Weyerhaeuser Timber Company and reported by Glenn  
A hemlock, 25 in. diam., bears N. 60 1/2° E., 325.0 ft. dist., no marks visible  
A hemlock, 37 in. diam., bears S. 33° W., 274 ft. dist., no marks visible  
A hemlock, 21 in. diam., bears N. 63° W., 574 ft. dist., no marks visible  
A hemlock, 25 in. diam., bears N. 69 1/2° W., 620 ft. dist., no marks visible.  
and bearing trees mid. by Glenn  
A hemlock, 24 in. diam., bears N. 54° E., 762 ft. dist., no marks visible  
A hemlock, 21 in. diam., bears N. 75.2 ft. (Record, N. 64° W.)  
and bearing trees mid. by Glenn  
A hemlock, 25 in. diam., bears N. 69 1/2° W., 620 ft. dist., no marks visible.

**Sec. 12**  
The history of surveys pertaining to this survey is as follows:  
In 1854, Harvey Gordon, U.S. Deputy Surveyor, surveyed the east boundary of the township.  
In 1872, J. H. McClung, U.S. Deputy Surveyor, surveyed the subdivisional lines.  
In 1962, William W. Glenn, Cadastral Surveyor, dependently resurveyed a portion of the subdivisional lines, subdivided sec. 1 and re-monumented certain original corner points without survey.  
In 1967-71, Floyd A. Brooks and Timothy A. Kent, Cadastral Surveyors, dependently resurveyed a portion of the east boundary.  
The survey and retracement were executed by Donel N. Potterson, Cadastral Surveyor, beginning May 3, 2006 and completed June 29, 2006, pursuant to Special Instructions dated May 4, 2005, approved May 5, 2005, for Group Number 216, Oregon, under Assignment Instructions dated April 24, 2006, and pursuant to Special Instructions for Group 200, dated March 8, 2004, approved March 8, 2004, and Group 2300, dated March 16, 2007, approved March 21, 2007, under Assignment Instructions dated April 24, 2006, and Group 200 re-Assignment dated March 16, 2007. He was assisted by Matthew H. Gons and David A. Moore, Laborers.

**Sec. 7**  
Preliminary to the resurvey, the lines of the prior surveys were retraced and search was made for all corners and other corners of record. The retracement date here. Thoroughly verified and only the true line field notes are given hereon.  
The directions of the lines are based upon the true meridian as determined by direct solar observation.  
An analysis of the undisturbed field data assured a closure not exceeding 1/4000 in error. Measured distances and directions have been adjusted by computer software which incorporates a least squares adjustment to the adjusted bearings and distances are reported to the nearest second and 0.01 foot.  
The official lotting and areas are as shown on the plat accepted January 23, 1973.  
All new bearing trees have a 2 1/2" inch x 1/4" inch nail driven at the base on right side center, unless otherwise noted in the corner description.  
The description of the North 1/16 section corner of sections 12 and 7, on the east boundary of the township, is as described by Brooks and Kent in 1967-71. The description of the 1/4 section corner of sections 1 and 12 is as described by Glenn in 1962.  
The geodetic position noted hereon was determined from a terrestrial tie to Lane County GPS control station LCCM-2668

**Sec. 18**  
The resurvey and retracement represented by this plat, having been correctly executed in accordance with the requirements of law and the regulations of this Bureau, is hereby accepted.

For the Director  
*John P. Bennett, Acting*  
Chief Cadastral Surveyor of Oregon

UNITED STATES DEPARTMENT OF THE INTERIOR  
BUREAU OF LAND MANAGEMENT  
Portland, Oregon