

TOWNSHIP 29 SOUTH, RANGE 8 WEST, OF THE WILLAMETTE MERIDIAN, OREGON

DEPENDENT RESURVEY

④ The cor. of sects 5, 6, 7 and 8 monumented with an iron post 2 1/2 ins. diam. from J. L. Linn, plat. 5 ms above the ground, with brass cap mid. as reported in 1980-82, from which the remains of a bearing tree and a 1/4 sec. corner, Oregon County Survey No. 1924, reported by Jeffery Rogers.

A 1/4 sec. 36 ft. diam. bears N. 75° E., 193.5 ft. dist., with temporary iron bolts visible in the tree.

and the remains of bearing trees and a 1/4 sec. corner, Oregon County Survey No. 1924, reported by Jeffery Rogers, Oregon County Survey No. 29 E., 2 1/2 W., 1931 (Gentle No. 290000), reported by Jeffery Rogers.

A 1/4 sec. 36 ft. diam. bears N. 75° E., 193.5 ft. dist., with temporary iron bolts visible in the tree.

A 1/4 sec. 36 ft. diam. bears N. 75° E., 193.5 ft. dist., with temporary iron bolts visible in the tree.

A 1/4 sec. 36 ft. diam. bears N. 75° E., 193.5 ft. dist., with temporary iron bolts visible in the tree.

④ The 1/4 sec. cor. of sects 5 and 8 monumented with an iron post 2 1/2 ins. diam. from J. L. Linn, plat. 4 ms above the ground, with brass cap mid. as reported in 1980-82, from which the remains of a bearing tree and a 1/4 sec. corner, Oregon County Survey No. 1924, reported by Jeffery Rogers.

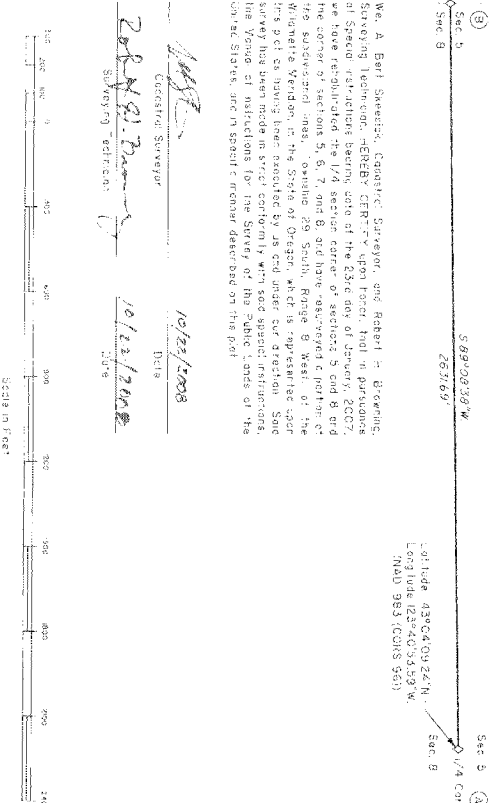
A decayed hemlock stump size approximately bears S. 17 1/2° E., 27.9 ft. dist., with no marks visible and bearing trees and a 1/4 sec. corner, Oregon County Survey No. 2354, reported in the Douglas County Surveyors Office, Map file No. W193-69.

A 1/4 sec. 36 ft. diam. bears S. 23 1/2° W., 33.3 ft. dist., with a heeled blaze.

A 1/4 sec. 36 ft. diam. bears S. 60° 3/4° W., 32.4 ft. dist., with a heeled blaze.

A 1/4 sec. 36 ft. diam. bears S. 23 1/2° W., 33.3 ft. dist., with a heeled blaze.

A 1/4 sec. 36 ft. diam. bears S. 23 1/2° W., 33.3 ft. dist., with a heeled blaze.



*[Signature]*  
 Chief of Surveyors  
 Date: 10/22/2008

UNITED STATES DEPARTMENT OF THE INTERIOR  
 BUREAU OF LAND MANAGEMENT  
 Portland, Oregon

Original copies promptly re-monumented and returned to the surveyor.

For the Director  
*[Signature]*  
 Chief Geodesic Surveyor of Oregon  
 Date: 10/22/2008

The geographic position shown herein was determined by the use of a GPS receiver and a real-time kinematic (RTK) receiver. The accuracy of the position is stated in the accompanying report. The accuracy of the position is stated in the accompanying report.

Each new bearing tree has a 2 1/2 inch x 1/4 inch magnetic nail (MAGNAIL) driven on the right side center, unless otherwise noted in the corner description.

An article of the unadjusted field notes issued a course was exceeded by 14000 in error. Measured angles and distances have been adjusted by computer software. The unadjusted bearings and distances were adjusted by the least squares method and returned to the surveyor's original copy.

The plat, which constitutes the entire record of this survey, having been correctly executed in accordance with the requirements of law, the signature of this Bureau is hereby accepted.

THERE ARE NO LINE NOTES TO GO WITH THIS RETRACEMENT - ALL THE AVAILABLE INFORMATION IS ON THIS PLAT

ORIGINAL