

FILED
Date: 11/18/2008 By: JC
This survey consists of
-Map, Copy of Map in Blk Vol. 95
Narrative
Corner Map PAGE 21500
DOUGLAS COUNTY
SURVEYOR

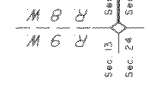
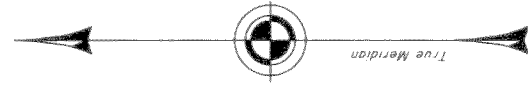
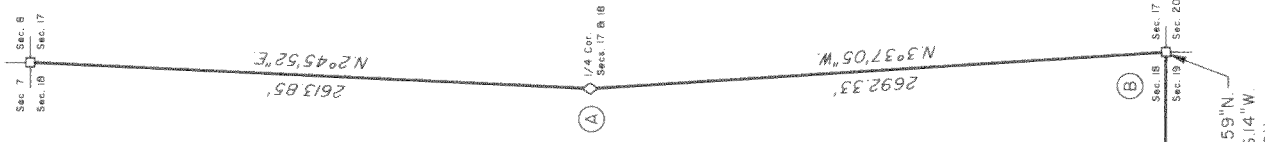
TOWNSHIP 28 SOUTH, RANGE 8 WEST, OF THE WILLAMETTE MERIDIAN, OREGON

RETRACEMENT AND REHABILITATION

- (A) The 1/4 sec. cor. of secs. 17 and 18, monumented with an iron pipe, 1-1/4 ins. diam., firmly set, projecting 15 ins. above the ground, with brass cap mkd. as reported by Roseberry, et al, in 1969-73; from which the remains of the original bearing trees
 - A fir, 70 ins. diam., bears S. 60° E., 4.0 ft. dist., with no marks visible on an opened blaze.
 - A sawed fir stump, 77 ins. diam., bears S. 35° W., 7.3 ft. dist., with no marks visible on an opened blaze.
 - and the remains of bearing trees reported by Roseberry, et al
 - A hemlock, 26 ins. diam., bears N. 27° E., 42.9 ft. dist., with a healed blaze.
 - A sawed and decayed hemlock stump, 19 ins. diam., bears N. 36° W., 25.1 ft. dist., with no marks visible.
 - and a new bearing tree
 - A fir, 9 ins. diam., bears N. 87° W., 6.1 ft. dist., mkd. 1/4 S18 BT.

- (B) The cor. of secs. 17, 18, 19, and 20, monumented with an iron post, 2-1/2 ins. diam., firmly set, projecting 18 ins. above the ground, with brass cap mkd. as reported by Roseberry, et al, in 1969-73; from which the remains of bearing trees mkd. by Roseberry, et al
 - A fir, 27 ins. diam., bears N. 82° E., 47.5 ft. dist., with a healed blaze.
 - A sawed hemlock stump, 25 ins. diam., bears S. 5° E., 24.4 ft. dist., with scribe marks BS R8W S20 BT visible on a partially healed blaze.
 - A cedar, 28 ins. diam., bears S. 72 1/2° W., 35.0 ft. dist., with a healed blaze. (Record S. 84° W.)
 - A hemlock, 20 ins. diam., bears N. 42° W., 24.4 ft. dist., with a healed blaze.
 - and new bearing trees
 - A cedar, 4 ins. diam., bears S. 35 1/4° E., 14.2 ft. dist., mkd. X BT.
 - A hemlock, 8 ins. diam., bears S. 68 1/2° W., 41.4 ft. dist., mkd. T28S R8W S19 BT.

- (C) The 1/4 sec. cor. of secs. 18 and 19, monumented with an iron post, 2-1/2 ins. diam., firmly set, projecting 3 ins. above the ground, with brass cap mkd. as reported by Roseberry, et al, in 1969-73; from which new bearing trees
 - A fir, 5 ins. diam., bears S. 49 3/4° W., 37.3 ft. dist., mkd. 1/4 S19 BT.
 - A hemlock, 6 ins. diam., bears N. 13 1/4° W., 19.6 ft. dist., mkd. 1/4 S18 BT.



LEGEND

- ◇ Original corner previously remonumented
- Corner previously established or reestablished
- Corner previously established or reestablished; remonumented this survey

We, A. Bert Skeesick, Cadastral Surveyor, and Robert H. Browning, Surveying Technician, HEREBY CERTIFY upon honor that in pursuance of Special Instructions bearing the date of the 22nd day of February, 2002, the 8th day of March 2004, and the 16th day of March, 2007, we have retraced a portion of the subdivisional lines, and rehabilitated certain corner points in Township 28 South, Range 8 West, Willamette Meridian, Oregon. Said retracement and rehabilitation has been executed in strict conformity with said Special Instructions, the Manual of Instructions for the Survey of the Public Lands of the United States, and in specific manner described on this plat.

[Signature]
Cadastral Surveyor
Date: 10/06/2008

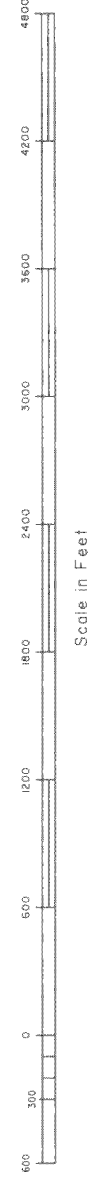
[Signature]
Surveying Technician
Date: 10/06/2008

UNITED STATES DEPARTMENT OF THE INTERIOR
BUREAU OF LAND MANAGEMENT
Portland, Oregon

The retracement and rehabilitation represented by this plat, having been correctly executed in accordance with the requirements of law and the regulations of this Bureau, is hereby accepted.

For the Director
[Signature]
Chief Cadastral Surveyor of Oregon

Date: 10/16/2008



THERE ARE NO LINE NOTES TO GO WITH THIS RETRACEMENT - ALL THE AVAILABLE INFORMATION IS ON THIS PLAT