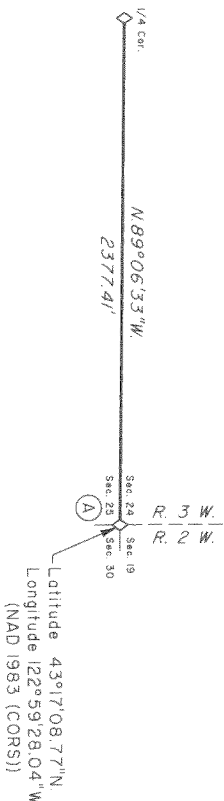


TOWNSHIP 26 SOUTH, RANGE 3 WEST, OF THE WILLAMETTE MERIDIAN, OREGON RETRACEMENT



Sec. 24

Sec. 19

Sec. 25

Sec. 30



(A) The cor. of secs. 19, 24, 25 and 30, on the E. bdy. of the T.p., perpetuated by Lester E. Calder, Oregon Registered Logging Engineer No. 2149, in 1952, and remonumented by the Douglas County Surveyors Office in 1979, recorded in the Douglas County Surveyors Record of Government Corners Renewed, T. 26 S., R. 3 W., Point Identifier No. 7003300, monumented with an iron post, 1 1/4 ins. diam., firmly set, projecting 6 ins. above ground (the orig. stone, 8x10x14 ins., buried alongside, projecting 2 ins. above ground, with no marks visible), with brass cap mkd.

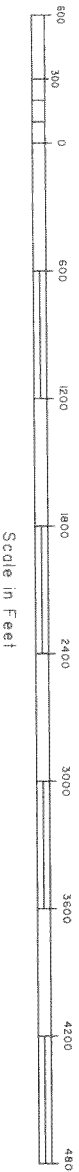
from which the remaining bearing trees mkd. by Gibb

- A fir, 25 ins. diam., bears N. 52° E., 17.8 ft. dist., with a headed blaze.
- A fir, 21 ins. diam., bears S. 14° E., 17.2 ft. dist., with a headed blaze.
- A fir, 16 ins. diam., bears N. 18° W., 11.9 ft. dist., with a headed blaze.
- and bearing tree mkd. by Calder
- A fir, 16 ins. diam., bears S. 51 1/2° W., 17.8 ft. dist., with a headed blaze.

We, Timothy J. Moore, Cadastral Surveyor, and Robert H. Browning, Surveying Technician, HEREBY CERTIFY upon honor that in pursuance of Special Instructions bearing the 8th day of March 2004, and the 16th day of March, 2007, we have retraced a portion of the subdivisional lines in Township 26 South, Range 3 West, Willamette Meridian, Oregon. Said retracement has been executed in strict conformity with said Special Instructions, the Manual of Instructions for the Survey of the Public Lands of the United States, and in specific manner described on this plat.

Timothy J. Moore
Cadastral Surveyor
Date October 9, 2008

Robert H. Browning
Surveying Technician
Date 10-06-08



This plat represents the entire survey record of the retracement of a portion of the subdivisional lines, T. 26 S., R. 3 W., Willamette Meridian, Oregon.

The history of the surveys pertaining to this retracement is as follows:

In 1855, Addison R. Flint, U.S. Deputy Surveyor, surveyed the East boundary.
 In 1882, Samuel C. Flint, U.S. Deputy Surveyor, surveyed a portion of the subdivisional lines.
 In 1909-10, William N. Gibb, U.S. Deputy Surveyor, surveyed a portion of the subdivisional lines of T. 26 S., R. 2 W.
 In 1972-75, Daniel L. Berry, G. Steven Popken, and James J. Carlson, Cadastral Surveyors, dependently resurveyed a portion of the subdivisional lines, and subdivide section 26.
 In 1981, Wayne L. Rogers, Cadastral Surveyor, dependently resurveyed a portion of the subdivisional lines.

The retracement was executed by Timothy J. Moore, Cadastral Surveyor, and Robert H. Browning, Surveying Technician, beginning April 29, 2004, and completed May 3, 2004, pursuant to Special Instructions for Group 2100, dated March 8, 2004, and Group 2300, dated March 16, 2007, under Assignment Instructions dated August 9, 2004, and Group 2100 re-Assignment dated March 16, 2007. They were assisted by Dick B. St. John and Thomas A. Holloman, Surveying Technicians.

The retracement data were thoroughly verified and only the true line data is given hereon.

The direction of the line was determined by direct solar observation and refers to the true meridian.

The survey was performed utilizing both conventional (directly measured angles and distances) and NAVSTAR Global Positioning System (GPS) satellite techniques. The GPS measurements utilized dual frequency, carrier phase GPS receivers. The baselines were computed in and adjusted by least squares analysis. An analysis of the unadjusted field data assured a closure not exceeding 1:4000 in error. Conventionally measured distances and directions have been adjusted by computer software that incorporates a least squares adjustment routine. The adjusted bearings and distances are reported to the nearest second and 0.01 foot.

The description of the 1/4 section corner of section 24 and 25 is as reported by Berry, et al, in 1972-75.

The lottings and areas are as shown on the plat approved October 23, 1882.

The geodetic position shown hereon was determined by a tie utilizing dual frequency carrier phase GPS receivers relative to the National Spatial Reference System.

LEGEND

◊ Original corner previously remonumented

UNITED STATES DEPARTMENT OF THE INTERIOR
BUREAU OF LAND MANAGEMENT
Portland, Oregon

The retracement represented by this plat, having been correctly executed in accordance with the requirements of law and the regulations of this Bureau, is hereby accepted.

For the Director
John P. Swanson, Acting
Chief Cadastral Surveyor of Oregon

Date 10/16/2008

THERE ARE NO LINE NOTES TO GO WITH THIS RETRACEMENT - ALL THE AVAILABLE INFORMATION IS ON THIS PLAT