

# TOWNSHIP 29 SOUTH, RANGE 8 WEST, OF THE WILLAMETTE MERIDIAN, OREGON RETRACEMENT

This plat represents the entire record of the retracement of a portion of the subdivision lines in T. 29 S., R. 8 W., Willamette Meridian, Oregon. The history of surveys pertaining to this retracement is as follows:

In 1855, Dennis Hathorn, U.S. Deputy Surveyor, surveyed the subdivision lines.

In 1856, A. J. Burnett, U.S. Deputy Surveyor, surveyed numerous Donation Land Claims in the T.

In 1965, Donald R. Beck, Cadastral Surveyor, resurveyed a portion of the subdivision lines and subdivided section 31.

In 2001, A. Bert Skeesick, Cadastral Surveyor, resurveyed a portion of the subdivision lines and subdivided section 32.

In 2004, A. Bert Skeesick and Timothy J. Moore, Cadastral Surveyors, resurveyed a portion of the subdivision lines and subdivided section 29.

In 2006, A. Bert Skeesick, Cadastral Surveyor, resurveyed a portion of the subdivision of section lines of section 29, and further subdivided section 29.

This retracement was executed by A. Bert Skeesick, Cadastral Surveyor, beginning May 8, 2006, and completed May 8, 2006, pursuant to Special Instructions for Group 2100, dated March 8, 2004, and Group 2300, dated March 16, 2007, under Assignment Instructions dated May 8, 2006, and Group 2100 re-assignment dated March 16, 2007. He was assisted by Robert Durling and Darlene P. Barlow, Surveying Technicians.

The retracement data were thoroughly verified and only the true line data is given herein.

The direction of the line is based on the true meridian as determined by direct solar observations.

An analysis of the unadjusted field data assured a closure not exceeding 1:4000 in error. Measured distances and directions have been adjusted by computer software that incorporates a least squares adjustment routine. The adjusted bearings and distances are reported to the nearest second and 0.01 foot.

The descriptions of the corners are as reported by Skeesick in 2001, and Moore and Skeesick in 2004.

UNITED STATES DEPARTMENT OF THE INTERIOR  
BUREAU OF LAND MANAGEMENT

Portland, Oregon

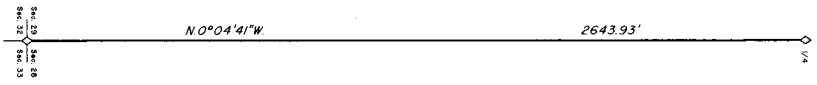
The retracement represented by this plat, having been accepted and recorded in accordance with the requirements of law and the regulations of this Bureau, is hereby accepted.

For the Director

*John P. Ramanowski, Acting*  
Chief Cadastral Surveyor of Oregon

April 7, 2008  
Date

LEGEND  
◊ Original corner previously monumented



Sec. 29

Sec. 28

I, A. Bert Skeesick, Cadastral Surveyor, HEREBY CERTIFY upon honor, that in the retracement of a portion of the subdivision lines in Township 29 South, Range 8 West, of the Willamette Meridian, in the State of Oregon, which is represented upon this plat, as having been executed by me and under my direction, said survey has been made in strict conformity with Special Instructions for Group 2100, dated March 8, 2004, and Group 2300, dated March 16, 2007, of the Bureau of Land Management, United States, and in specific manner described upon this plat.

*A. Bert Skeesick*  
Cadastral Surveyor

4/03/2008  
Date



THERE ARE NO LINE NOTES TO GO WITH THIS RETRACEMENT - ALL THE AVAILABLE INFORMATION IS ON THIS PLAT.