

# County Surveyor's Record, Douglas County, Oregon

Dependent Resurvey of a Portion of the Subdivisional Lines,  
T. 22 S., R. 4 W., Willamette Meridian, Oregon

18625

**CHAINS**

A grand fir, 11 ins. diam., bears N. 20° E., 44 lks. dist., with healed double blaze.

A fir, 6 ins. diam., bears N. 57° W., 50 lks. dist., with fragmentary scribe marks visible on opened blaze.

This point was not recorded, as far as can be determined it was not recognized as the corner by adjacent landowners, and is not utilized in this survey.

Ascend over SW. slope.

41.85 Spur, slopes S. 65° W.; desc. over NE. slope.

43.45 Head of ravine, drains N. 60° E.; asc. over broken SE. slope.

51.20 Spur, slopes N. 70° E.; asc. over SW. slope.

51.40 South edge of marsh, edge bears N. 60° E. and S. 60° W.

53.20 North edge of marsh, edge bears N. 70° E. and S. 20° W.; asc. over SW. slope.

56.05 Gravelled road, 20 lks. wide, bears N. 85° W. and S. 75° E.

59.910 From this point, a corner established as the N 1/16 sec. cor. of secs. 15 and 16, not recorded, by Wilford N. Haines, Registered Land Surveyor No. 239, in 1972, bears West, 0.047 chs. dist., monumented with an iron rod, 5/8 in. diam., firmly set, projecting 6 ins. above ground, from which the remains of bearing trees mkd. by Haines:

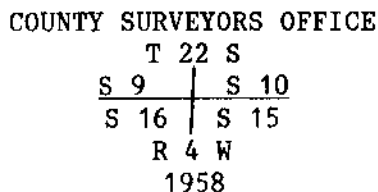
A sawed fir stump, 14 ins. diam., bears S. 88° E., 107 lks. dist., with healed blaze.

A sawed grand fir stump, 13 ins. diam., bears N. 46° W., 15½ lks. dist., with healed blaze.

This point was not recorded, as far as can be determined it was not recognized as the corner by adjacent landowners and is not utilized in this survey.

77.65 Spur, slopes S. 50° W.; desc. over broken NW. slope.

80.07 The cor. of secs. 9, 10, 15, and 16, perpetuated and recorded by James W. Byron, Deputy County Surveyor, in 1958, monumented with an iron post, 1¼ ins. diam., firmly set, projecting 14 ins. above ground, with brass cap mkd.



from which the remains of original bearing trees

A root hole, bears N. 60° E., 30 lks. dist., with a down fir stump alongside, size indeterminate, no marks visible.

A root hole, bears S. 18° E., 42 lks. dist.

A fir, 32 ins. diam., bears N. 78° W., 22 lks. dist., with healed blaze.

and the remains of bearing trees mkd. by Byron