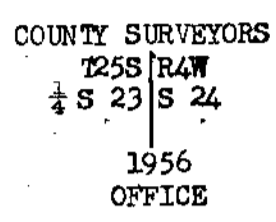


County Surveyor's Record, Douglas County, Oregon

Dependant Resurvey of Portion of Subdivisional Lines, T. 25 S., R. 4 W.

CHAINS
39.69

The $\frac{1}{4}$ sec. cor. of secs. 23 and 24, perpetuated by the county surveyor with an iron pipe, 1 in. diam., protruding 6 ins. above ground, with brass cap marked



from which the original bearing trees:

An uprooted fir stump, 36 ins. diam., bears S. 10° E., 14 lks. dist., with scribe mark S visible on opened blaze.

A cedar, 15 ins. diam., bears N. 50° W., 15 lks. dist., with illegible scribe marks visible on opened blaze.

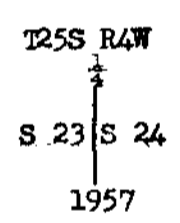
and trees marked by the county surveyor,

A cedar, 17 ins. diam., bears N. 44 $\frac{1}{2}$ ° E., 45 lks. dist., marked $\frac{1}{4}$ S24 CS BT.

A cedar, 25 ins. diam., bears S. 49 $\frac{1}{2}$ ° W., 45 lks. dist., marked $\frac{1}{4}$ S23 CS BT.

at the corner point

Set an iron post, 28 ins. long, 2 $\frac{1}{2}$ ins. diam., 26 ins. in the ground, with brass cap marked



from which

A cedar, 16 ins. diam., bears N. 68° 45' E., 82 lks. dist., marked $\frac{1}{4}$ S24 BT.

A cedar, 8 ins. diam., bears S. 82 $\frac{1}{2}$ ° W., 84 lks. dist., marked $\frac{1}{4}$ S23 BT.

Reset the iron pipe alongside the iron post.

N. 5° 04' E., beginning new measurement.

Descend 175 ft. over N. slope, changing to NE. slope.

10.14 Foot of descent, slopes E.; ascend 77 ft. over E. slope.

18.63 Spring branch, 2 lks. wide, course E.; ascend 85 ft. over SE. slope.

26.56 Spur, slopes NE.; descend 347 ft. over N. slope, changing to NW. slope.

39.40 The cor. of secs. 13, 14, 23 and 24, monumented with a cedar post, 4 ins. cross section, firmly set, 4 ft. above ground, with scribe marks S13 on NE., S24 on SE., S23 on SW., and S14 on NW. face. I find no evidence of the original bearing trees, but locally established, non-recorded, bearing trees have been added to perpetuate this corner point. This corner has been locally accepted for a number of years and I accept it as the best available evidence of the original corner.

Locally established bearing tree,