

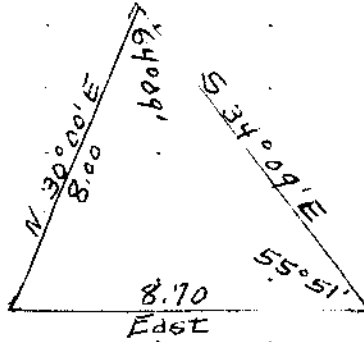
Dependent Resurvey of Subdivisional Lines Bounding Sec. 18

CHAINS

24.30

Right bank of Umpqua River. No trace of the original meander cor.

In order to determine the distance across the river, I set a flag on line, on the left bank, lay off a base, N. 30° 00' E., 8.00 chs. to a point from which the flag on the left bank bears S. 34° 09' E. From the flag on the left bank of the river, a flag at the end of the base bears N. 34° 09' W. All bearings checked by direct reading of the solar and all angles checked by deflection:



Dist. on random line  
Dist. by triangulation.

24.30 chs.  
8.70 "

33.00

33.00

Left bank of Umpqua River. No trace of the original meander cor.

40.00

No trace of the original 1/4 sec. cor. Set temp. stake.

76.61

Fall 23 lks. S. of the original cor. of secs. 7, 8, 17, and 18.

This mile bears N. 89° 50' E., 76.61 chs.

From the cor. of secs. 7, 8, 17, and 18,

South, retracing bet. secs. 17 and 18.

40.00

No trace of the original 1/4 sec. cor. Set temp. stake.

76.68

Fall 5.26 chs. W. of the original cor. of secs. 17, 18, 19, and 20.

This mile bears N. 3° 55' E., 76.86 chs.

From the cor. of secs. 17, 18, 19, and 20,

West, retracing bet. secs. 18 and 19.

40.21

No trace of the original 1/4 sec. cor.

80.48

Fall 3.09 chs. N. of the reestablished cor. of secs. 13, 18, 19, and 24, on W. bdy. of Tp.

Resurvey

The cor. of secs. 17, 18, 19, and 20 is a fir tree, 20 ins. diam., which was squared up about 55 years ago. The overgrowth has been chopped off and fire has burned off all traces of marks. Beside the tree

Set an iron post, 3 ft. long, 2 ins. diam., 28 ins. in the ground, for cor. of secs. 17, 18, 19, and 20, with brass cap mkd.

|        |       |
|--------|-------|
| T 22 S | R 8 W |
| S 18   | S 17  |
| S 19   | S 20  |

1931

from which