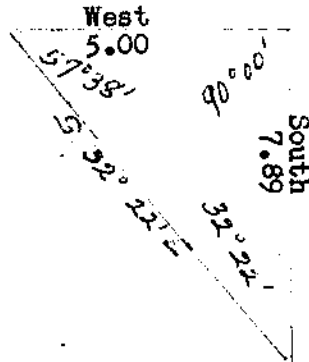


Dependent Resurvey of part of W. Bdy. of T. 22 S., R. 8 W.

CHAINS

In order to determine the distance across the river, I lay off a base, West, 5.00 chs. to a point from which a flag set on the random line on the left bank of the river bears S. 32° 22' E. From the flag on the left bank of the river, a flag at the west end of the base, bears N. 32° 22' W. All bearings checked by direct reading of the solar and all angles checked by deflection:



Dist. on random line	25.70 chs.
Dist. by triangulation	<u>7.89</u> "
	33.59 "

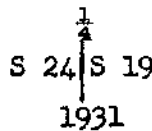
- 33.59 Left bank of Umpqua River. No trace of the original meander cor. on either side.
- 40.00 No trace of the original 1/4 sec. cor. Set temp. stake.
- 80.00 No trace of the original cor. of secs. 13, 18, 19, and 24. Set temp. stake.

- 39.36 South, retracing bet. secs. 19 and 24.
Fall 1.91 chs. West of the original 1/4 sec. cor.
True line from the 1/4 sec. cor. of secs. 19 and 24 to the cor. of secs. 7, 12, 13, and 18, bears N. 0° 55' W., with a length of 119.38 chs.

Resurvey

The point of the original 1/4 sec. cor. of secs. 19 and 24 is determined from the original bearing trees from which the overgrowth has been chopped and the marks burned. At this point

Set an iron post, 3 ft. long, 2 ins. diam., 28 ins. in the ground, for 1/4 sec. cor., with brass cap mkd.



from which

Old bearing trees:

- A fir, 18 ins. diam., bears N. 10° E., 22 lks. dist., marks all burned off.
- A fir, 28 ins. diam., bears S. 65° W., 18 lks. dist., marks all burned off.

New bearing trees:

- A fir, 10 ins. diam., bears N. 88° 45' E., 106 lks. dist., mkd. 1/4 S 19 B T.
- A fir, 18 ins. diam., bears N. 55° W., 55 lks. dist., mkd. 1/4 S 24 B T.