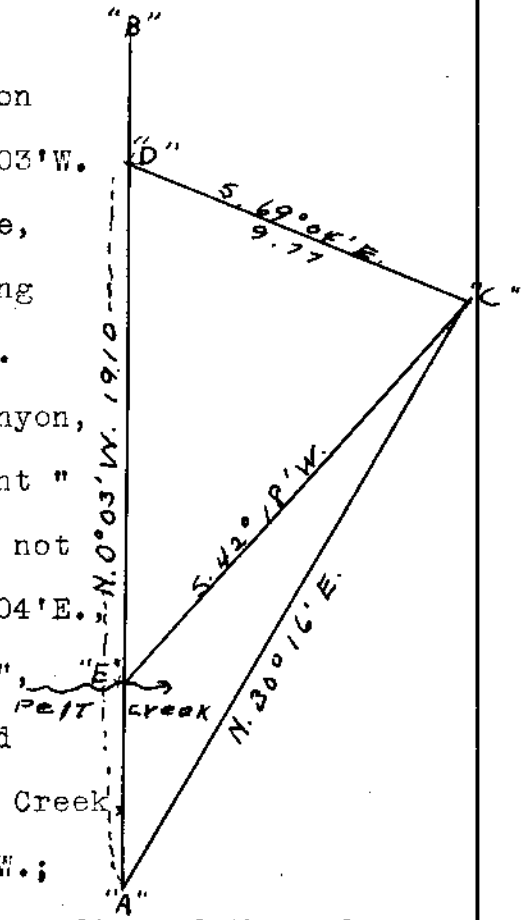


Subdivisions of T. 31 S., R. 1 E.

CHAINS

A pointed stub, designated "B", on line across canyon, bears N.0°03'W.
 An upturned root of fallen tree, designated "C", in small opening across canyon, bears N.30°16'E.
 From a point on line across canyon, designated "D", from which point "B" bears N.0°03'W., point "A" not visible, point "C" bears S.69°04'E. 9.77 chs. dist. From point "C", point "A" bears S.30°16'W., and intersection of line with Pelt Creek, designated "E", bears S.42°18'W.;
 all bearings checked by direct reading of the solar and all angles checked by deflection.
 Distance on random line . 40.00 chs.
 Distance by triangulation 19.10 "
 59.10 "



59.10 Triangulation point "D".

60.77 Impassable bluff on line, traverse point; thence on traverse line

N.76½°W., 2.67 chs.

N.0°03'W., 1.80 "

S.76½°E., 2.67 " to

62.57 Regain line at point "B".

77.53 Intersect sectional correction line, 79.88 chs. W. of the cor. of secs. 27, 28, 33, and 34.

At the point of intersection

Set an iron post, 3 ft. long, 2 ins. diam., 27 ins. in the ground, for cor. of secs. 28, 29, 32, and 33, with brass cap marked