

Subdivision of T. 28 S., R. 1 E.

CHAINS

from which

A fir, 14 ins. diam., bears N. 44\* E., 12 lks.

dist., mkd. T28S R1E S5 BT.

A fir, 10 ins. diam., bears S. 46\* E., 4 lks.

dist., mkd. T28S R1E S8 BT.

A fir, 12 ins. diam., bears S. 72\* W., 41 lks.

dist., mkd. T28S R1E S7 BT.

A fir, 16 ins. diam., bears N. 36\*W., 32 lks.

dist., mkd. T28S R1E S6 BT.

Land, mountainous.

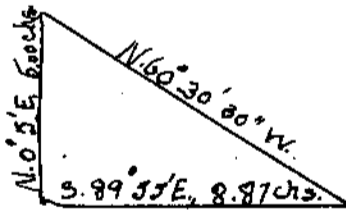
Soil, loose, coarse, rocky loam; 3rd rate.

Timber, fir, pine, cedar and hemlock.

Undergrowth, rhododendron, vine maple and chinquapin.

S. 89\* 55' E., on a random line, bet. secs. 5 and 8.

- 5.58 Foot of precipitous ascent; vertical angle to flag on random line at top of precipitous ascent =  $\angle 39\frac{1}{2}^*$ ; auxiliary flag bears N. 0\* 5' E., 5 chs.; from flag on random line at top of precipitous ascent, the auxiliary flag bears N. 60\* 30' 30'' W.; all bearings checked by direct reading of the solar, and all angles checked by deflection.



Distance on random line = 5.58 chs.

Distance by triangulation = 8.87 chs.

Distance on random line 14.45 chs.

- 40.00 Set temp.  $\frac{1}{4}$  sec. cor.
- 80.02 Intersect N. and S. line, 2 lks. N. of the cor. of secs. 4, 5, 8 and 9.

Thence.