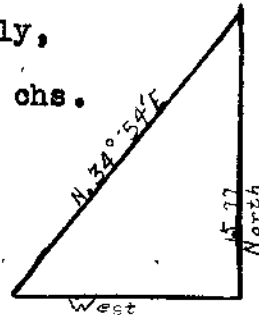


South Boundary of T. 24 S., R. 3 E.

CHAINS

From the cor. of secs. 35 and 36 only,
 auxiliary flag bears North, 15.77 chs.
 dist., from a point on S. bdy.
 projected to top of bluffs, the
 auxiliary flag bears N.34°54'E.
 dist. by triangulation = 11.00 chs.



- 11.00 To top of bluffs, and spur sloping SW.
 Enter heavy timber and scattered undergrowth, bears NE.
 and SW.
 Desc. 920 ft. over W. slope.
- 24.00 Dry ravine, course SW.; thence desc. along S. slope.
- 37.60 Desc. over steep, rocky W. slope.
- 39.90 Mid point on S. bdy. of sec. 35, determined as herein-
 after set forth.
 Set an iron post, 3 ft. long, 1 in. diam., 28 ins. in
 the ground, for $\frac{1}{4}$ sec. cor. of sec. 35 only, with
 brass cap marked
- $$\frac{\frac{1}{4} \text{ S35}}{1926}$$
- from which
- A fir, 12 ins. diam., bears N.35 $\frac{1}{2}$ °E., 83 lks.
 dist., marked $\frac{1}{2}$ S 35 B T
- A fir, 10 ins. diam., bears N.80°W., 76 lks.
 dist., marked $\frac{1}{2}$ S 35 B T
- 43.60 To top of bluff, 200 ft. high, facing NW.
 Offset North, 2.02 chs.
 Thence
 West, on offset line, continuing measurement.
- 45.74 Offset South, 2.02 chs., and regain true line at foot
 of bluffs.
 Thence
 West on true line, continuing measurement.