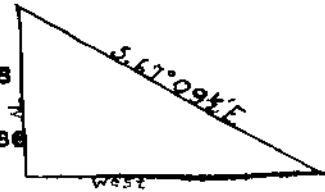


County Surveyor's Record, Douglas County, Oregon

South Boundary of T. 24 S., R. 3 E.

CHAINS

of intersection auxiliary flag bears North, 15.77 chs. dist., (longer base impossible). From the auxiliary flag, the flag on bluff at 41.46 chs., bears S.67°09½'E.



Measured dist., on S. bdy. = 41.46 chs.

Dist. by triangulation - 37.44 "
 78.90 "

78.90 Point of intersection of line projected South from the S. 1/16 sec. cor. bet. secs. 35 and 36, determined as hereinafter set forth.

Set an iron post, 3 ft. long, 2 ins. diam., 18 ins. in the ground, to bed rock, surrounded by a mound of stone, 3 ft. base, 1 ft. high, for cor. of secs. 35 and 36 only, with brass cap marked

T24S	R3E
S35	S36

1926

from which

A fir, 8 ins. diam., bears N. 58½°E., 95 lks.

dist., marked T 24 S R 3 E S 36 B T

A fir, 8 ins. diam., bears N. 18°W., 85 lks.

dist., marked T 24 S R 3 E S 35 B T

Land; mountainous.

Soil; rocky, 3rd and 4th rate.

Timber; fir, pine, hemlock, and cedar.

Undergrowth, vine maple, rhododendron, hazel, and yew.

West, on S. bdy. of sec. 35

Over series of impassable bluffs, several hundred feet high, facing SE.