

Subdivisions of T. 26 S., R. 3 W.

CHAINS

undergrowth of fir, hazel and huckleberry.

July 11, 1882.

GENERAL DESCRIPTION

The West half of this township was surveyed in full in 1855, the other 5 sections much later and at different dates. The 15 miles I have run to complete the township is the rough part.

There are some good locations still left for settlers.

There is a good deal of good sugar pine timber left with cedar and hemlock and fir.

It is well watered and of a good quality and much of it is well calculated for range for cattle and sheep.

Field Notes of Retracement and Dependent Resurvey of Boundaries of Section 9; Subdivision of Section 9; Subdivision of the Southwest Quarter of Section 9; Meanders of the North Umpqua River in SW  $\frac{1}{4}$  section 9; and

Segregation Survey of Power Reserve in SE  $\frac{1}{4}$  SW  $\frac{1}{4}$ , Section 9; Township 26 South, Range 3 West Surveyed by Fred Mensch, U. S. Cadastral Engineer, Under Special Instructions dated July 14, 1924.

Retracement of Boundaries of Sec. 9, T. 26 S., R. 3 W.

From the cor. of secs. 8, 9, 16 and 17, T. 26 S., R. 3 W. S.89°31'E., retracing bet. secs. 9 and 16.

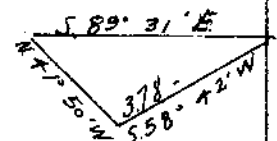
21.41 To right bank of North Umpqua River.

Project random line across river to a point on the left bank. From this point auxiliary flag bears S.58°42'W. 3.78 chs. dist. From auxiliary flag, the flag on the right bank of the river bears N.41°50'W; all bearings checked by direct reading of the solar.

Dist. on random line - 21.41 chs.

Dist. by triangulation - 5.02 chs.

26.43 chs.



26.43 Left bank of river.