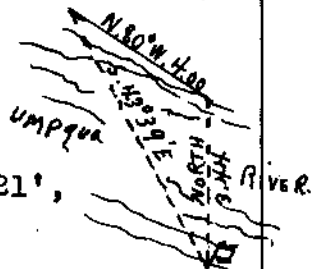


## Retracement of Subdivisional Lines, T. 26 S., R. 2 W.

CHAINS

the  $\frac{1}{4}$  sec. cor. bears East, 63 lks. dist.; at 59.00 chs. intersect left bank of North Umpqua River.

To determine distance across river, I set flag on left bank; then from point on line, on right bank, run base N.80°W., 4.00 chs. to a point from which the flag bears S.43°39'E.; by separate measurement of each angle, they are respectively, 36°21', 100°00' and 43°39'; their sum being 180°



$\frac{\sin.36^{\circ}21' \times 4.00}{\sin.43^{\circ}39'}$  = 3.44, which added to 59.00 chs.

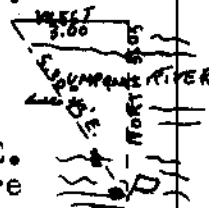
makes 62.44 chs. to right bank of river; at 85.49 chs. fall 1.89 chs. W. of cor. of secs. 13, 14, 23 and 24.

East, retracing line bet. secs. 13 and 24; at 40.00 chs. the  $\frac{1}{4}$  sec. cor. bears North, 1.08 chs. dist., and at 79.72 chs. fall 4.14 chs. S. of the cor. of secs. 13 and 24, on E. bdy. of the Tp.

I return to the cor. of secs. 23, 24, 25 and 26; thence West, retracing line bet. secs. 23 and 26; at 40.00 chs. I make diligent search for a distance of 10 chs. or more in all directions, but find no trace of the  $\frac{1}{4}$  sec. cor.; at 80.57 chs. fall 4.77 chs. N. of the cor. of secs. 22, 23, 26 and 27.

North, retracing the line bet. secs. 22 and 23; at 42.61 chs. the  $\frac{1}{4}$  sec. cor. bears East, 89 lks. dist. at 67.50 chs. intersect left bank of North Umpqua River.

To determine distance across river, I set flag on line on left bank; then, from point on line on right bank, run base West, 3.00 chs. to a point from which the flag bears S.30°43'E. By separate measurement of each angle, they are respectively 59°17', 90°00' and 30°43'; their sum being 180°



Distance across therefore is  $\tan.59^{\circ}17' \times 3.00$ , which is 5.05, which added to 67.50 chs. makes 72.55 chs. to right bank of river; at 88.78 chs. fall 1.09 chs. W. of the cor. of secs. 14, 15, 22 and 23.

East, retracing the line bet. secs. 14 and 23; at 40.67 chs. the  $\frac{1}{4}$  sec. cor. bears North, 69 lks. dist., and at 81.19 chs. fall 1.70 chs. S. of the cor. of secs. 13, 14, 23 and 24.

N.89°10'W., retracing S. bdy. of sec. 16; at 45.31 chs. the original  $\frac{1}{4}$  sec. cor. of the McQuinn survey bears North, 72 lks. dist., and at 91.25 chs. fall 89 lks. S. of the cor. established by McQuinn as the cor. of secs. 16, 17, 20 and 21.

N.89°39'W., retracing S. bdy. of sec. 17; at 87.88 chs. (finding no trace, after diligent search of the McQuinn  $\frac{1}{4}$  sec. cor.) fall 34 lks. N. of the cor. established by McQuinn as the cor. of secs. 17, 18, 19 and 20.