

PRIMARY CORNER DESCRIPTION 1/4 Cor. for Secs. 4 and 5

Alias <u>047020</u>	Description <u>N NW Cor. Rice DLC #47</u>
Alias _____	Description _____
Alias _____	Description _____
Alias _____	Description _____

Original - Nathaniel Ford, under Contract #44 dated May 30, 1854 (DCSO records, Vol. 15 Page 6482

-----

Set ¼ sec. post at average distance, from which  
 A W.Oak 18" dia., bears N.71°E., 148 lks dist.  
 A B.Oak 14" dia., bears S.61°W., 48 lks. dist.

Original - Bowman and Burnett, under Contract dated Sept. 1855 (DLC survey)

-----

Beginning at the NW cor. of C 47 and ¼ sec. post between secs. 4 and 5, from which  
 A B.Oak 12" dia., bears S.20°E., 200 lks.  
 A B.Oak 8" dia., bears S.60°E., 450 lks.

Douglas Co. Surveyors Office - James Byron, Deputy - John Fee Ray Irving, crew - Dec. 23, 1954 (filed Dec. 10, 1957 from incomplete survey) - C.S. File 49/40

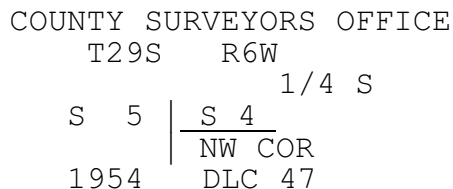
-----

Found - 4"x4" sq. stake, (see page 17 of notes in file) at fence corner.  
 Set 1" I.P. with brass cap mkd: ¼ S 5|4 County Surveyors  
 NW Cor DLC Office 1954  
 from which:  
 24" R.Fir bears N.24°E., 29.0 ft. bark blazed ¼ S4 CS BT.  
 16" R.Fir bears N.85¼°W., 24.5 ft. bark blazed ¼ S5 CS BT

BLM Resurvey, by Dale B. Bedell, Surveyed under Group No. 1703. Surveyed Aug. 1993 thru May 1994. (D.C.S.O. records Vol. 52 Page(s)19679)

-----

From the 1/4 sec. cor. of secs. 4 and 5, identical with the NW. cor. of Donation Land Claim No. 47, perpetuated by Hicks in 1918, from original evidence no longer in existence, and further perpetuated by Byron, Deputy County Surveyor, in 1954; monumented with an iron post, 1 1/4 ins. diam., firmly set, projecting 12 ins. above the ground, with brass cap mkd.



from which the remains of a bearing tree mkd. by Byron

(Cont. Next page)

TOWNSHIP 29 RANGE 06 POINT IDENTIFIER # 300640

PRIMARY CORNER DESCRIPTION 1/4 Cor. Secs. 4 & 5

Alias 047020 Description N NW Cor. Rice DLC #47  
Alias \_\_\_\_\_ Description \_\_\_\_\_  
Alias \_\_\_\_\_ Description \_\_\_\_\_  
Alias \_\_\_\_\_ Description \_\_\_\_\_

A roothole, bears N.23°E., 43½ lks. dist., with a down and decayed fir alongside, size indeterminate, no visible marks.  
and new bearing trees  
A fir, 10 ins. diam., bears N.31 3/4°E., 32 lks. dist., mkd. 1/4 S4 BT.  
A fir, 7 ins. diam., bears S.76°W., 42 lks. dist., mkd. 1/4 S5 BT.

Fd. ok by Ron Quimby, 4/1998 - 1998-0063 A&B

James Klein & Michael Erickson - For: Pacific Connector Gas Pipeline Project/Williams - Sept. 2014 - M166-23 A-C  
-----  
Found - 2½" brass cap stamped COUNTY SURVEYORS OFFICE 1954  
16½" Fir with healed face and tag dated 10/94;  
N.32°E., 21.1'  
17" Fir with healed face and tag dated 10/94;  
S.76°W., 27.7'