

THIS MAP WAS PREPARED FOR ASSESSMENT PURPOSE ONLY.

SEC.1 T33S. R.7W. W.M.
DOUGLAS COUNTY
1" = 400'

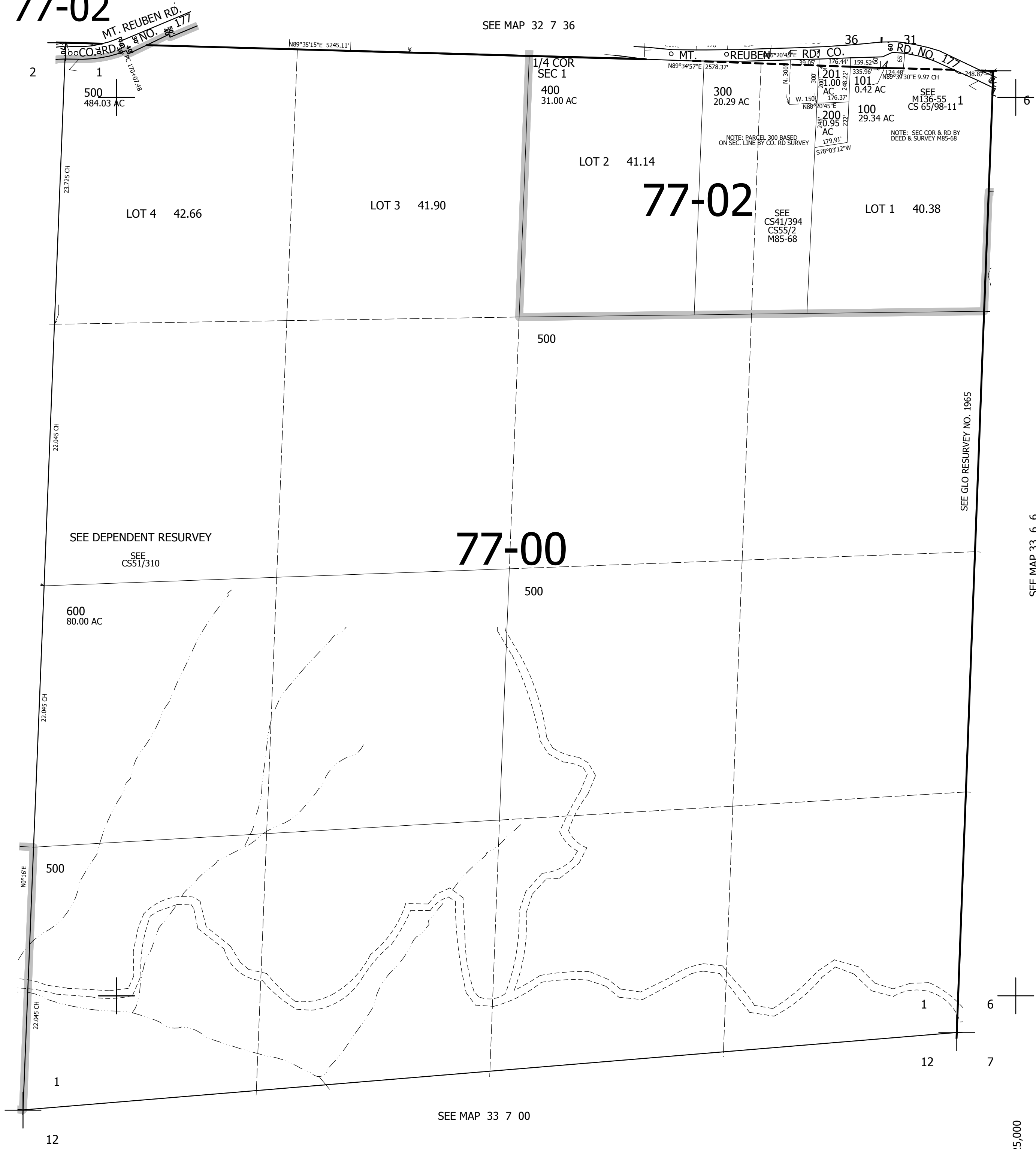
REVISED ON
12-27-01

33 7 1

35 36

77-02

SEE MAP 32 7 36



CANCELLED NO'S

SEE MAP 33 7 2

SEE DEPENDENT RESURVEY
SEE CS51/310

SEE GLO RESURVEY NO. 1965

SEE MAP 33 6 6

77-00

SEE MAP 33 7 00

400,000

4,125,000

33 7 1