

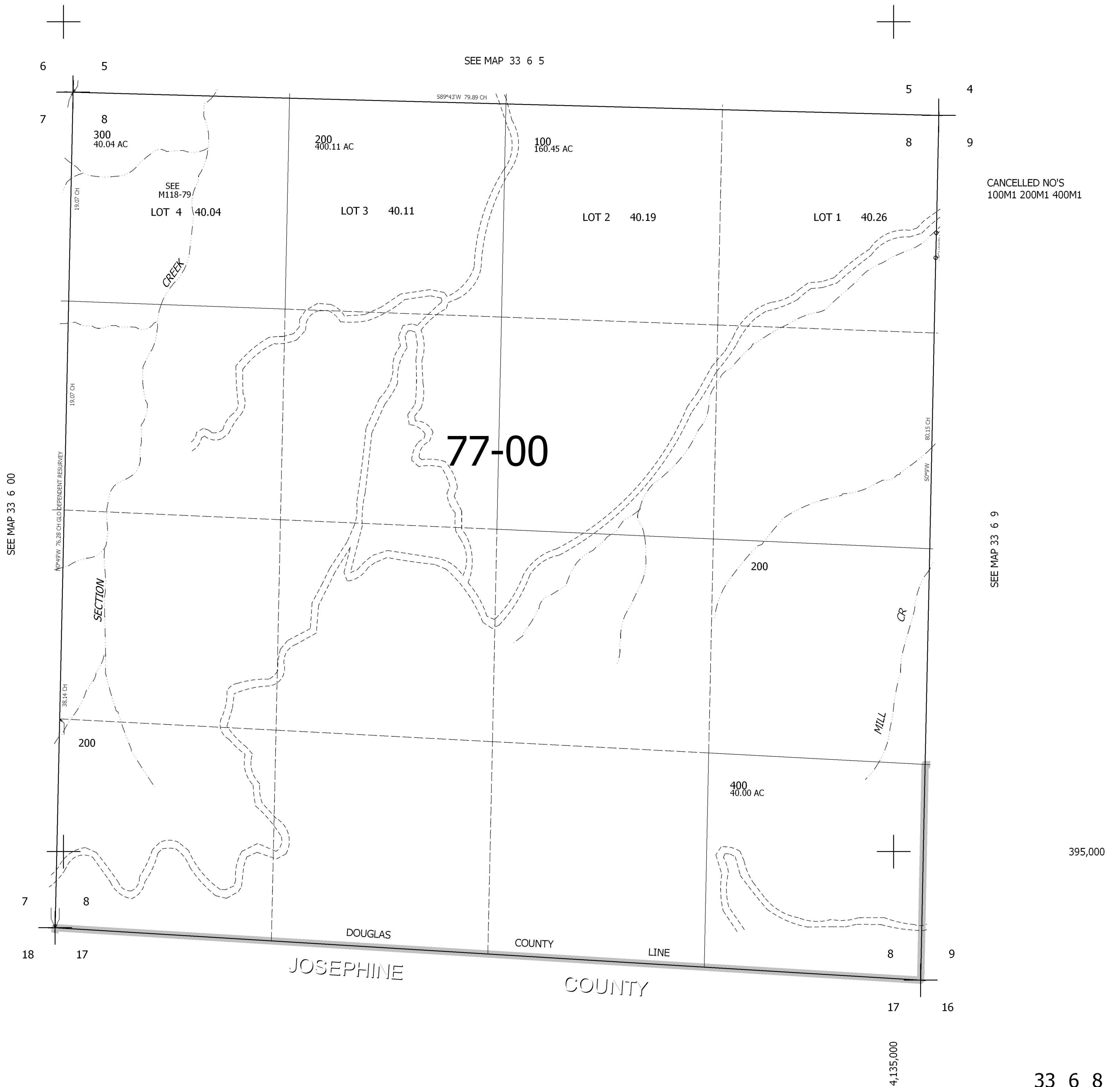
THIS MAP WAS PREPARED FOR ASSESSMENT PURPOSE ONLY.

SEC.8 T33S. R.6W. W.M.
DOUGLAS COUNTY

REVISED ON
2-29-00

33 6 8

1" = 400'



CANCELLED NO'S
100M1 200M1 400M1

77-00

SEE
M118-79
LOT 4 40.04

LOT 3 40.11

LOT 2 40.19

LOT 1 40.26

300
40.04 AC

200
40.11 AC

100
160.45 AC

200

400
40.00 AC

DOUGLAS
COUNTY
LINE
JOSEPHINE
COUNTY

SECTION

CREEK

MILL
CR

19.07 CH

19.07 CH

38.14 CH

S89°43'W 79.89 CH

80.15 CH

+