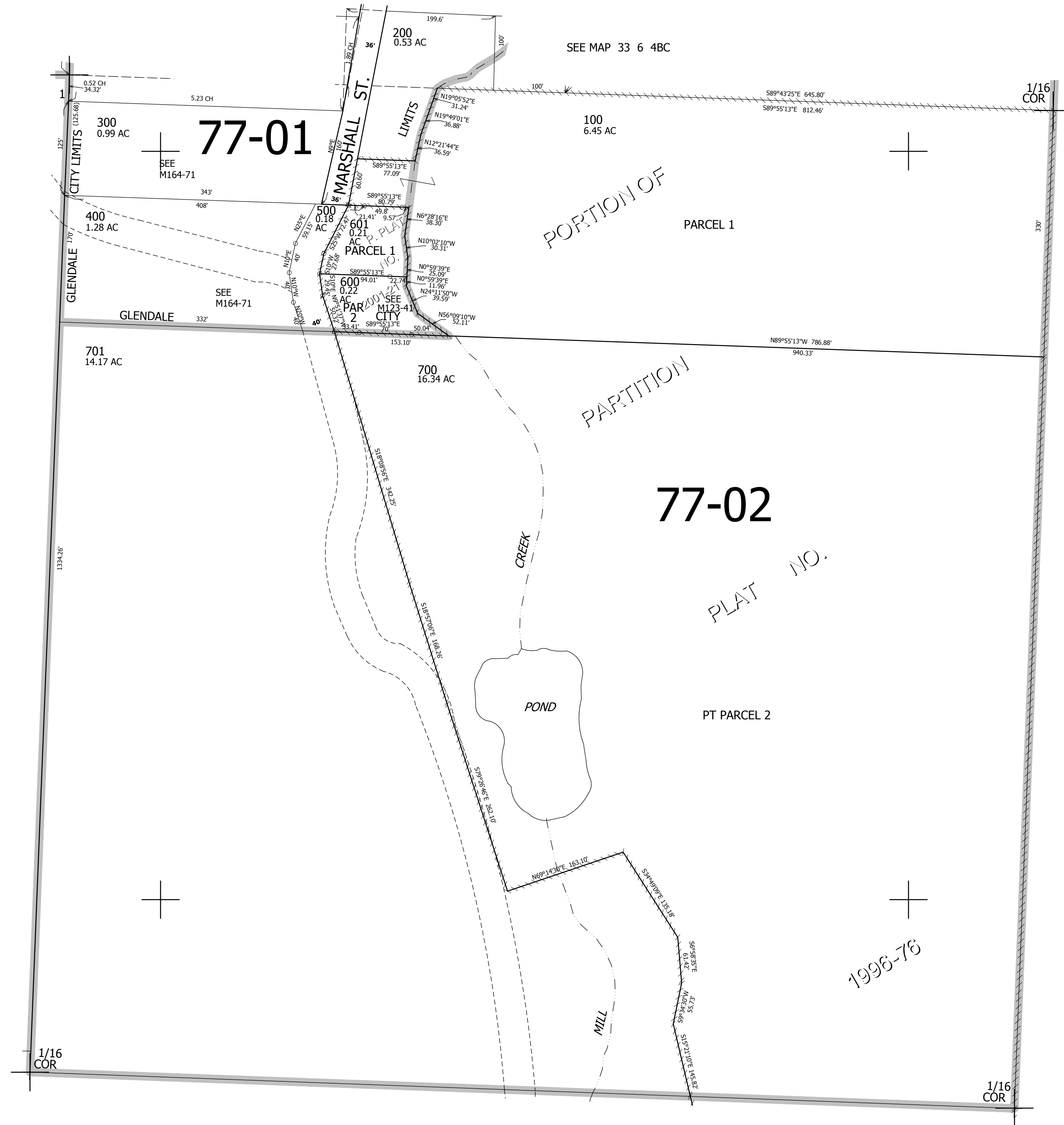


THIS MAP WAS PREPARED FOR ASSESSMENT PURPOSE ONLY.

NW1/4 SW1/4 SEC.4 T33S. R.6W. W.M.
DOUGLAS COUNTY
1" = 100'

REVISED ON
10-9-14

33 6 4CB
GLENDALE



CANCELLED NO'S
101 201

SEE MAP 33 6 5

SEE MAP 33 6 4

401,000

SEE MAP 33 6 4

4.136,500

33 6 4CB
GLENDALE